

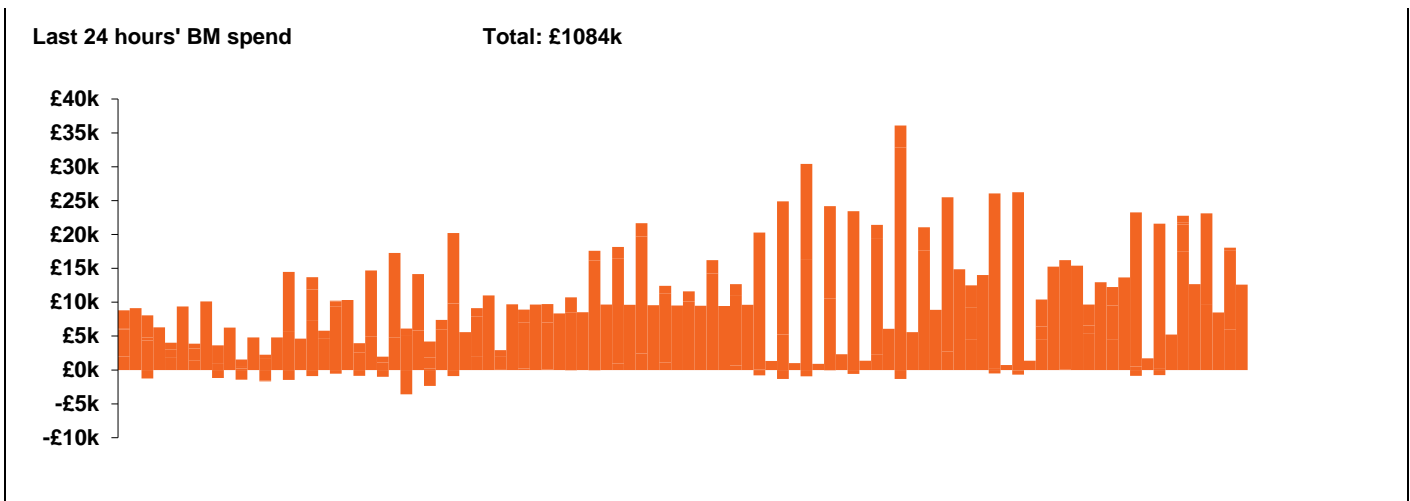
**National Electricity  
Transmission System Status Report**



**National Electricity Transmission System Status Report**  
Friday 01 May 2020

Today's High Level Risk Status Forecast for the next 24h			
General Status		Voltage	
Demand		System Inertia	
System Margins		Weather	
Generation		Transmission	
Active Constraints			

<a href="#">Today's Minimum De-Rated Margin</a>	9483 (SP 42)	
<a href="#">System Warnings</a>	None	
Current BMU Largest Loss Risk	Generation	1260 MW
	Demand	560 MW

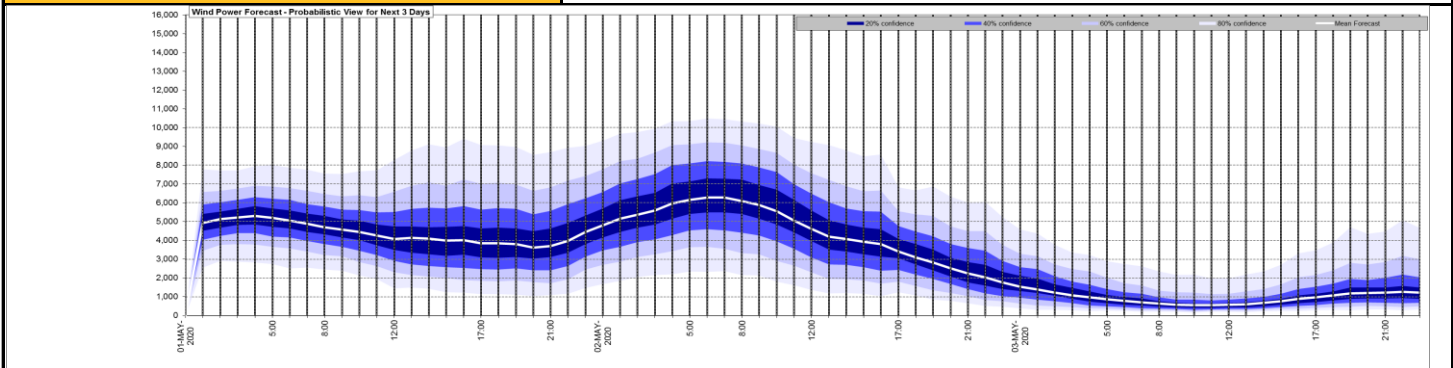


Yesterday's Market Summary	
<a href="#">Cash out price (Max)</a>	£38/MWh (SP34)
<a href="#">Cash Out Price (Min)</a>	£2.23/MWh (SP 8)
<a href="#">Peak Demand Yesterday</a>	31446 MW

**Interconnectors**  
**Net Transfer Capacity (MWs)**

Today	Import	Export	
Netherlands (BritNed)	1100	1133	Fully available
France (IFA)	2000	2000	Fully available
Belgium (Nemo)	1013	1013	Fully Available
Ireland (EWIC)	500	530	Fully Available
Northern Ireland (MOYLE)	500	500	Fully Available

**Wind Power Forecast**

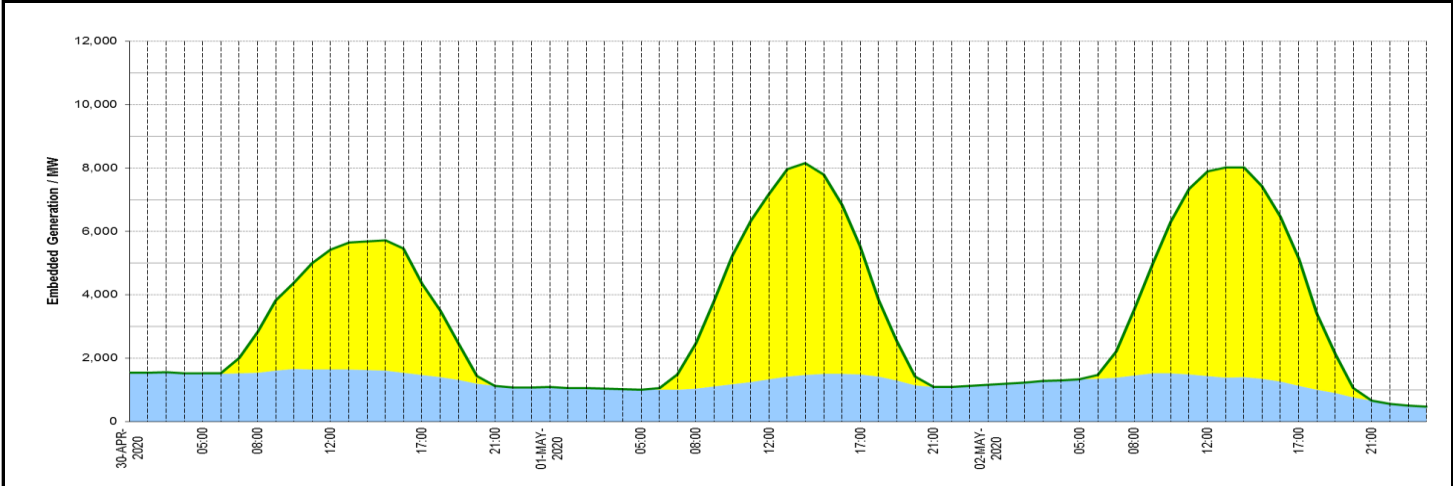


Key:

**Expected embedded generation (MWs)**

**Embedded Generation Forecast**

	30-APR-2020					01-MAY-2020					02-MAY-2020						
	05:00	08:00	12:00	17:00	21:00	00:00	05:00	08:00	12:00	17:00	21:00	00:00	05:00	08:00	12:00	17:00	21:00
Solar (MW)	0	1290	3790	2870	1	0	0	1427	5845	4035	0	0	0	2068	6451	4002	0
Wind (MW)	1522	1540	1643	1480	1127	1092	1005	1042	1329	1496	1088	1170	1329	1460	1444	1134	655
STOR (MW)	0	0	0	0	0	0	0	0	0	0	0	0	0	0	0	0	0
<b>Total (MW)</b>	<b>1522</b>	<b>2830</b>	<b>5433</b>	<b>4350</b>	<b>1128</b>	<b>1092</b>	<b>1005</b>	<b>2469</b>	<b>7174</b>	<b>5531</b>	<b>1088</b>	<b>1170</b>	<b>1329</b>	<b>3528</b>	<b>7895</b>	<b>5136</b>	<b>655</b>



Weather	Source	Commentary
Latest forecast (Summary)	<a href="#">Met Office</a> <a href="#">SEPA</a> <a href="#">Natural Resources Wales</a>	<b>Today:</b> Most areas seeing another unsettled day with a mixture of sunny spells and showers, heavy at times across northern and eastern areas. Drier across the far southwest of the UK though and less windy than yesterday.
		<b>Tonight:</b> Daytime showers tending to slowly become confined to northern, western and central parts of the UK whilst some clear spells develop. A little colder than the last couple of nights.
General Weather Concerns  e.g. wind, rain, snow, flooding, GB Weather Warnings	<a href="#">Met Office Weather Warnings</a> <a href="#">SEPA</a> <a href="#">Natural Resources Wales</a>	<b>UK Weather Warnings</b> None   <b>UK Flood Warnings:</b> None

*Contains public sector information licensed under the Open Government Licence v1.0*

Further Information	
BM Reports	<a href="https://www.bmreports.com">https://www.bmreports.com</a>
System Balancing Reports	<a href="https://www.nationalgrideso.com/balancing-data/system-balancing-reports">https://www.nationalgrideso.com/balancing-data/system-balancing-reports</a>
Forecast Volumes and Costs	<a href="https://www.nationalgrideso.com/balancing-data/forecast-volumes-and-costs">https://www.nationalgrideso.com/balancing-data/forecast-volumes-and-costs</a>
NGESO Insights	<a href="https://www.nationalgrideso.com/insights">https://www.nationalgrideso.com/insights</a>