

**National Electricity  
Transmission System Status Report**

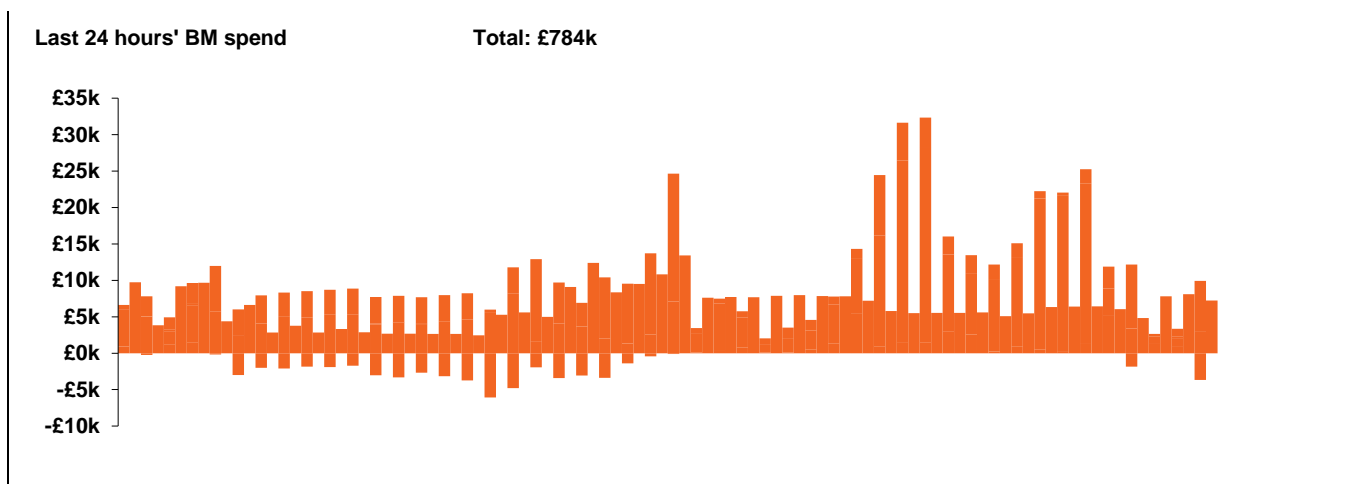


national**grid**ESO

**National Electricity Transmission System Status Report**  
Monday 27 April 2020

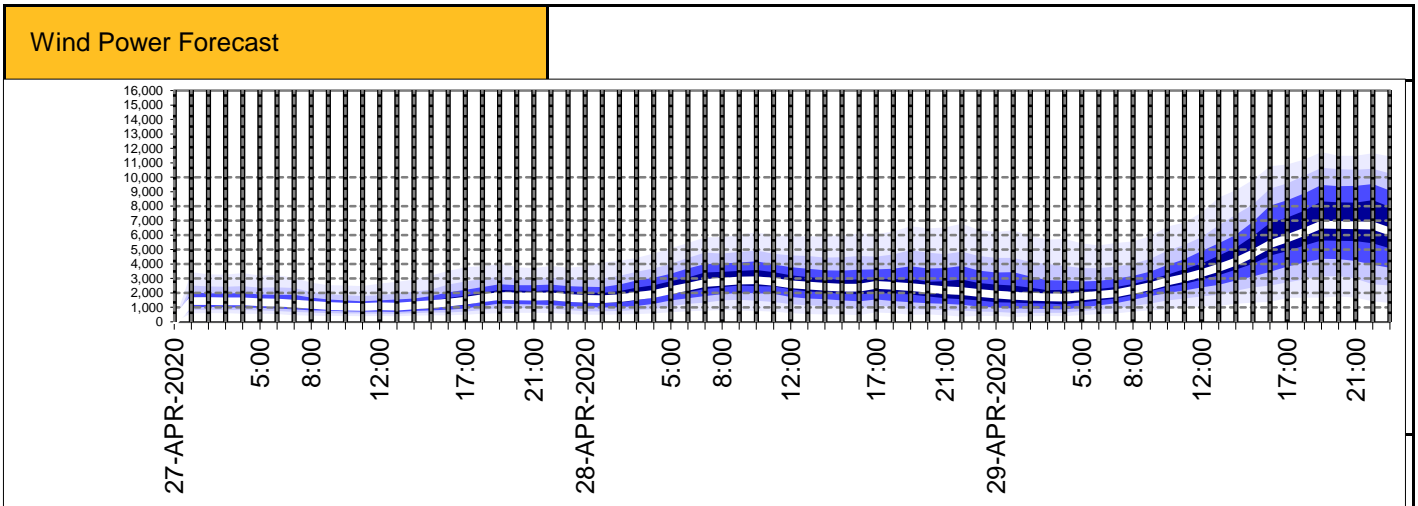
Today's High Level Risk Status Forecast for the next 24h			
General Status		Voltage	
Demand		System Inertia	
System Margins		Weather	
Generation		Transmission	
Active Constraints			

<a href="#">Today's Minimum De-Rated Margin</a>	7615.91 (SP 39)	
<a href="#">System Warnings</a>	None	
Current BMU Largest Loss Risk	Generation	1260 MW
	Demand	560 MW



Yesterday's Market Summary	
<a href="#">Cash out price (Max)</a>	£39.75/MWh (SP 36 41 42)
<a href="#">Cash Out Price (Min)</a>	£3.55/MWh (SP 19)
<a href="#">Peak Demand Yesterday</a>	27683 MW

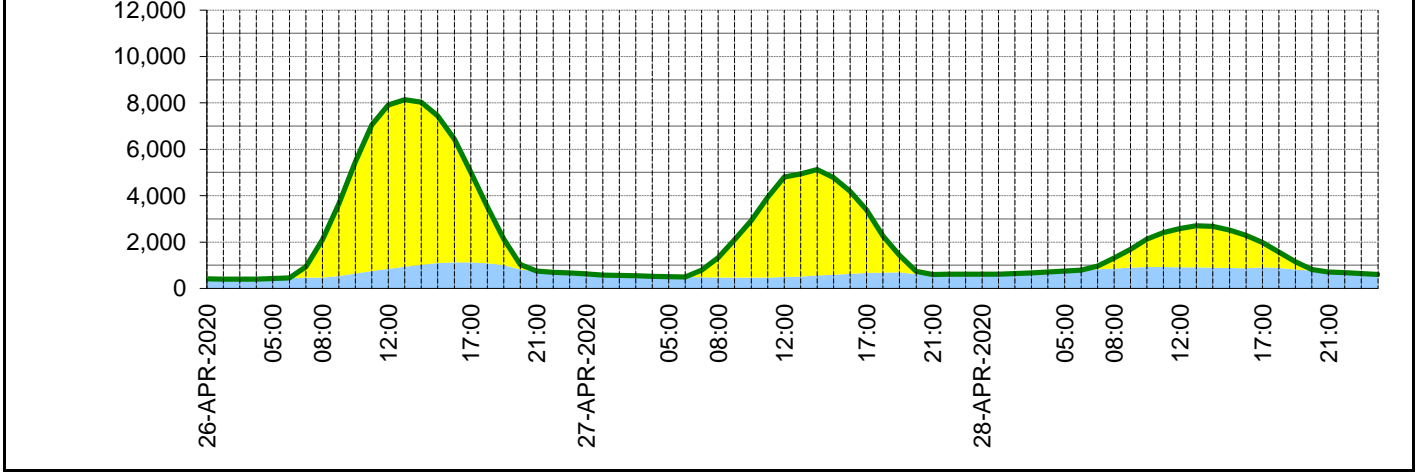
Interconnectors Net Transfer Capacity (MWs)			
Today	Import	Export	
Netherlands (BritNed)	1100	1133	Fully available
France (IFA)	2000	2000	Fully available
Belgium (Nemo)	1013	1013	Fully Available
Ireland (EWIC)	500	530	Fully Available
Northern Ireland (MOYLE)	500	500	Fully Available



### Expected embedded generation (MWs)

#### Embedded Generation Forecast

	26-APR-2020					27-APR-2020					28-APR-2020						
	05:00	08:00	12:00	17:00	21:00	00:00	05:00	08:00	12:00	17:00	21:00	00:00	05:00	08:00	12:00	17:00	21:00
Solar (MW)	0	1640	7070	3880	1	0	0	855	4310	2716	0	0	0	450	1664	1073	0
Wind (MW)	426	464	840	1128	742	632	507	473	496	668	598	609	746	860	915	904	709
STOR (MW)	0	0	0	0	0	0	0	0	0	0	0	0	0	0	0	0	0
<b>Total (MW)</b>	<b>426</b>	<b>2104</b>	<b>7910</b>	<b>5008</b>	<b>743</b>	<b>632</b>	<b>507</b>	<b>1328</b>	<b>4806</b>	<b>3384</b>	<b>598</b>	<b>609</b>	<b>746</b>	<b>1310</b>	<b>2579</b>	<b>1977</b>	<b>709</b>



Weather	Source	Commentary
Latest forecast (Summary)	<a href="#">Met Office</a> <a href="#">SEPA</a> <a href="#">Natural Resources Wales</a>	<b>Today:</b> A band of cloud and outbreaks of rain moving slowly southwards across England and Wales. Brighter elsewhere - warm in the south, whilst cooler further north with showers.
		<b>Tonight:</b> Cool with variable cloud and a few showers continuing in the north. Cloudy with patchy rain in south, this turning more persistent towards dawn.
General Weather Concerns e.g. wind, rain, snow, flooding, GB Weather Warnings	<a href="#">Met Office Weather Warnings</a> <a href="#">SEPA</a> <a href="#">Natural Resources Wales</a>	<b>UK Weather Warnings</b> None  <b>UK Flood Warnings:</b> None

*Contains public sector information licensed under the Open Government Licence v1.0*

Further Information	
BM Reports	<a href="https://www.bmreports.com">https://www.bmreports.com</a>
System Balancing Reports	<a href="https://www.nationalgrideso.com/balancing-data/system-balancing-reports">https://www.nationalgrideso.com/balancing-data/system-balancing-reports</a>
Forecast Volumes and Costs	<a href="https://www.nationalgrideso.com/balancing-data/forecast-volumes-and-costs">https://www.nationalgrideso.com/balancing-data/forecast-volumes-and-costs</a>
NGESO Insights	<a href="https://www.nationalgrideso.com/insights">https://www.nationalgrideso.com/insights</a>