

**National Electricity  
Transmission System Status Report**

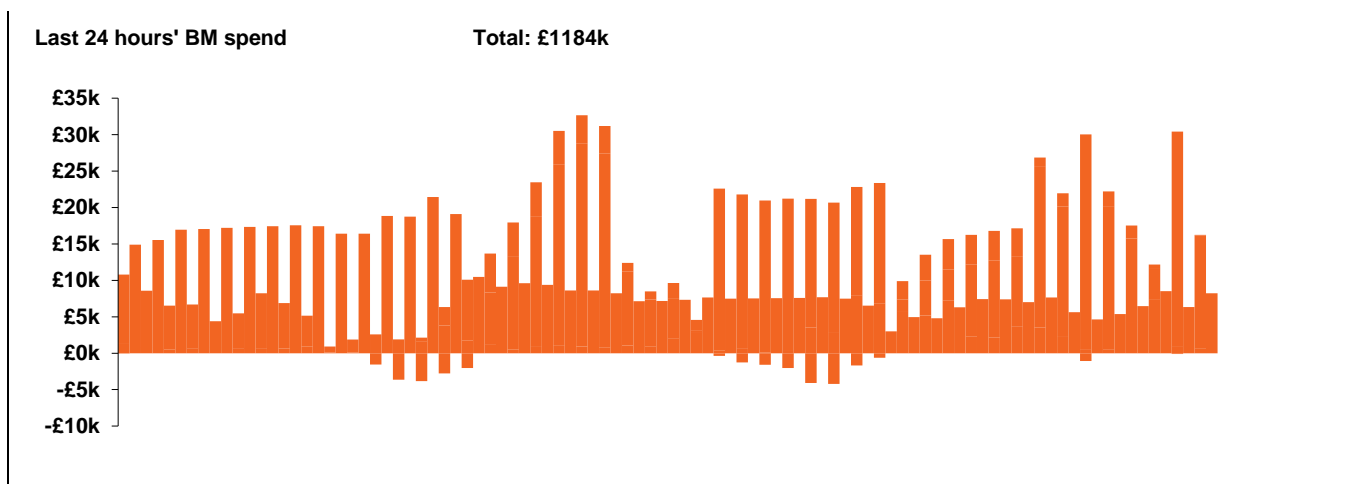


national**grid**ESO

**National Electricity Transmission System Status Report**  
Sunday 26 April 2020

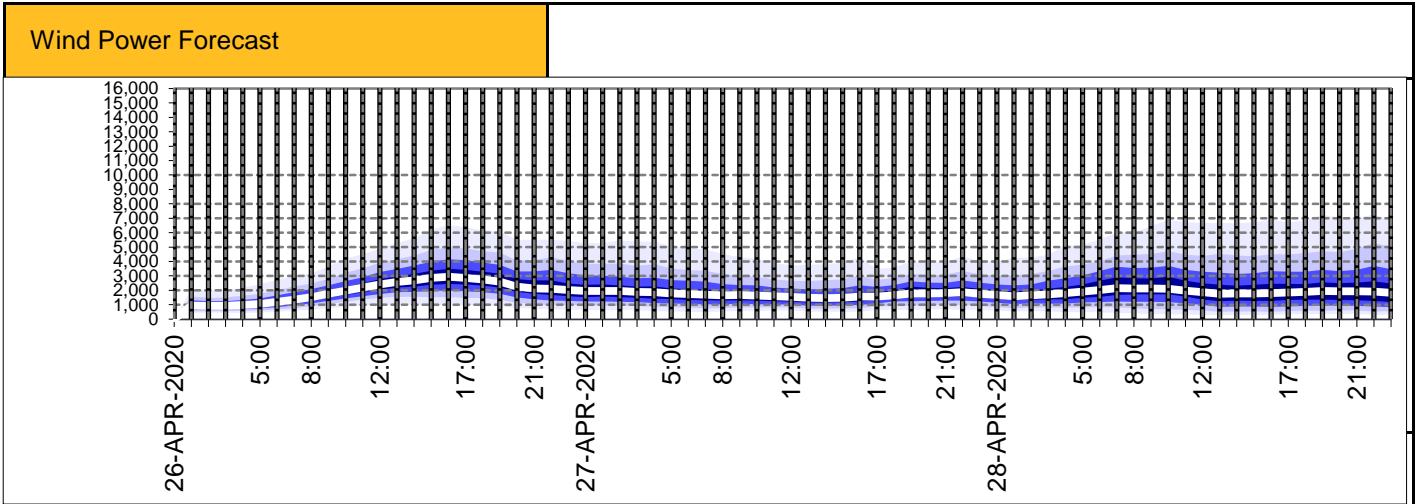
Today's High Level Risk Status Forecast for the next 24h			
General Status		Voltage	
Demand		System Inertia	
System Margins		Weather	
Generation		Transmission	
Active Constraints			

<a href="#">Today's Minimum De-Rated Margin</a>	10600 (SP 37)	
<a href="#">System Warnings</a>	None	
Current BMU Largest Loss Risk	Generation	1260 MW
	Demand	560 MW



Yesterday's Market Summary	
<a href="#">Cash out price (Max)</a>	£45.99/MWh (SP 43)
<a href="#">Cash Out Price (Min)</a>	£5.4/MWh (SP 33)
<a href="#">Peak Demand Yesterday</a>	27578 MW

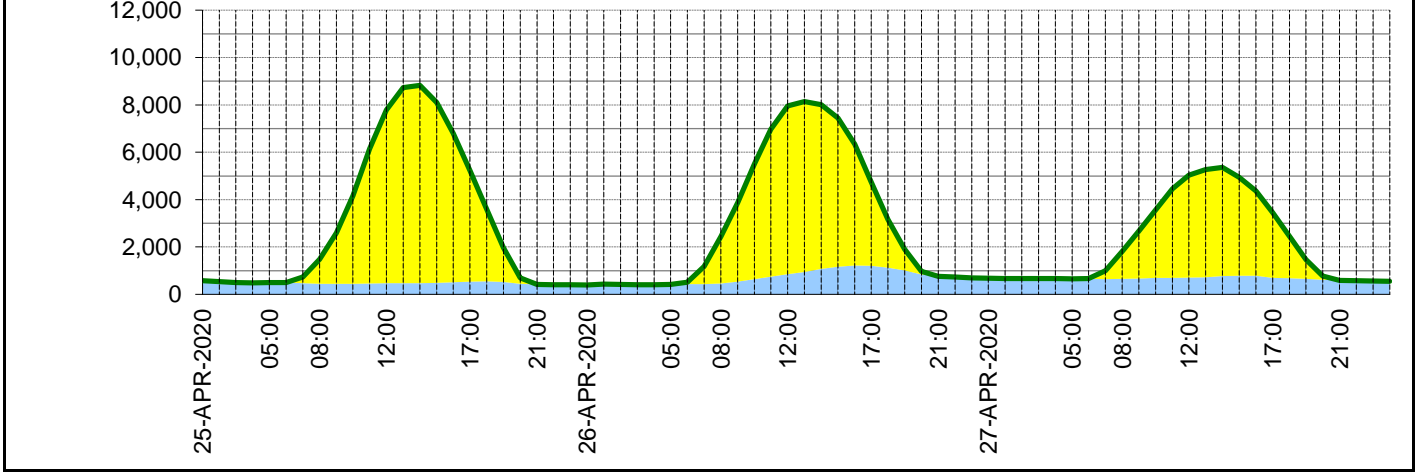
Interconnectors			
Net Transfer Capacity (MWs)			
Today	Import	Export	
Netherlands (BritNed)	1100	1133	Fully available
France (IFA)	2000	2000	Fully available
Belgium (Nemo)	1013	1013	Fully Available
Ireland (EWIC)	500	530	Fully Available
Northern Ireland (MOYLE)	500	500	Fully Available



**Expected embedded generation (MWs)**

**Embedded Generation Forecast**

	25-APR-2020					26-APR-2020					27-APR-2020						
	05:00	08:00	12:00	17:00	21:00	00:00	05:00	08:00	12:00	17:00	21:00	00:00	05:00	08:00	12:00	17:00	21:00
Solar (MW)	0	1040	7320	4690	3	0	0	1982	7105	3539	0	0	0	1154	4326	2747	0
Wind (MW)	495	441	467	543	422	395	414	462	850	1202	757	675	656	653	705	697	589
STOR (MW)	0	0	0	0	0	0	0	0	0	0	0	0	0	0	0	0	0
<b>Total (MW)</b>	<b>495</b>	<b>1481</b>	<b>7787</b>	<b>5233</b>	<b>425</b>	<b>395</b>	<b>414</b>	<b>2444</b>	<b>7955</b>	<b>4741</b>	<b>757</b>	<b>675</b>	<b>656</b>	<b>1807</b>	<b>5031</b>	<b>3444</b>	<b>589</b>



Weather	Source	Commentary
Latest forecast (Summary)	<a href="#">Met Office</a> <a href="#">SEPA</a> <a href="#">Natural Resources Wales</a>	<b>Today:</b> Cloudier across Wales, the Midlands and northern England with rain or showers, heavy in places later. Showers also affecting northern Scotland, where cooler. Fine elsewhere and warm in the south.
		<b>Tonight:</b> Outbreaks of rain moving south across central areas, while further showers will affect northern UK. Staying dry in the south with increasing cloud.
General Weather Concerns e.g. wind, rain, snow, flooding, GB Weather Warnings	<a href="#">Met Office Weather Warnings</a> <a href="#">SEPA</a> <a href="#">Natural Resources Wales</a>	<b>UK Weather Warnings</b> None  <b>UK Flood Warnings:</b> None

*Contains public sector information licensed under the Open Government Licence v1.0*

Further Information	
BM Reports	<a href="https://www.bmreports.com">https://www.bmreports.com</a>
System Balancing Reports	<a href="https://www.nationalgrideso.com/balancing-data/system-balancing-reports">https://www.nationalgrideso.com/balancing-data/system-balancing-reports</a>
Forecast Volumes and Costs	<a href="https://www.nationalgrideso.com/balancing-data/forecast-volumes-and-costs">https://www.nationalgrideso.com/balancing-data/forecast-volumes-and-costs</a>
NGESO Insights	<a href="https://www.nationalgrideso.com/insights">https://www.nationalgrideso.com/insights</a>