

**National Electricity  
Transmission System Status Report**

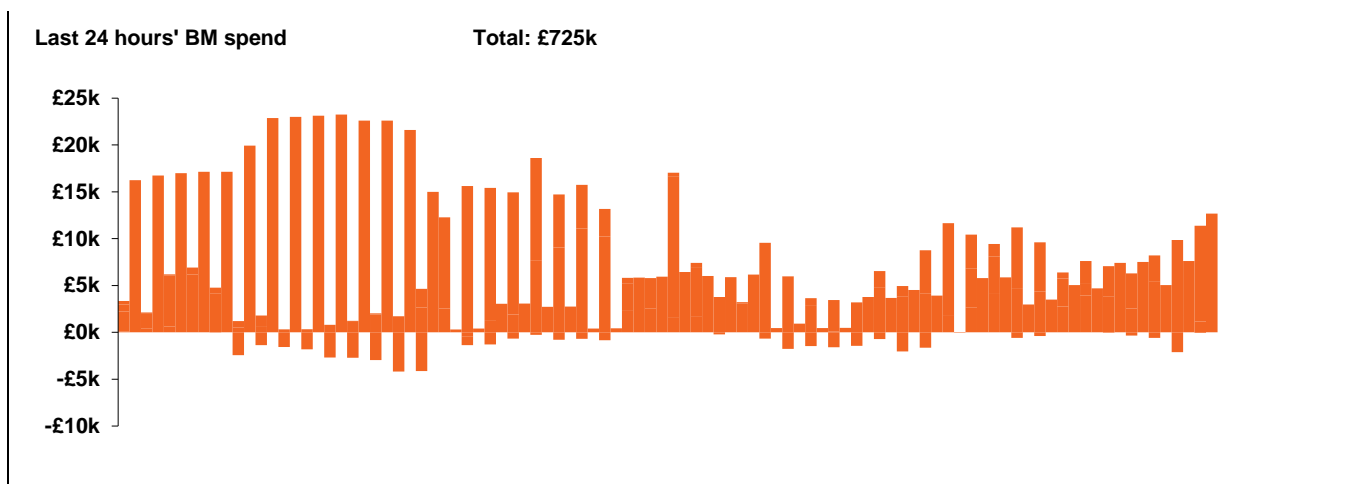


national**grid**ESO

**National Electricity Transmission System Status Report**  
Saturday 25 April 2020

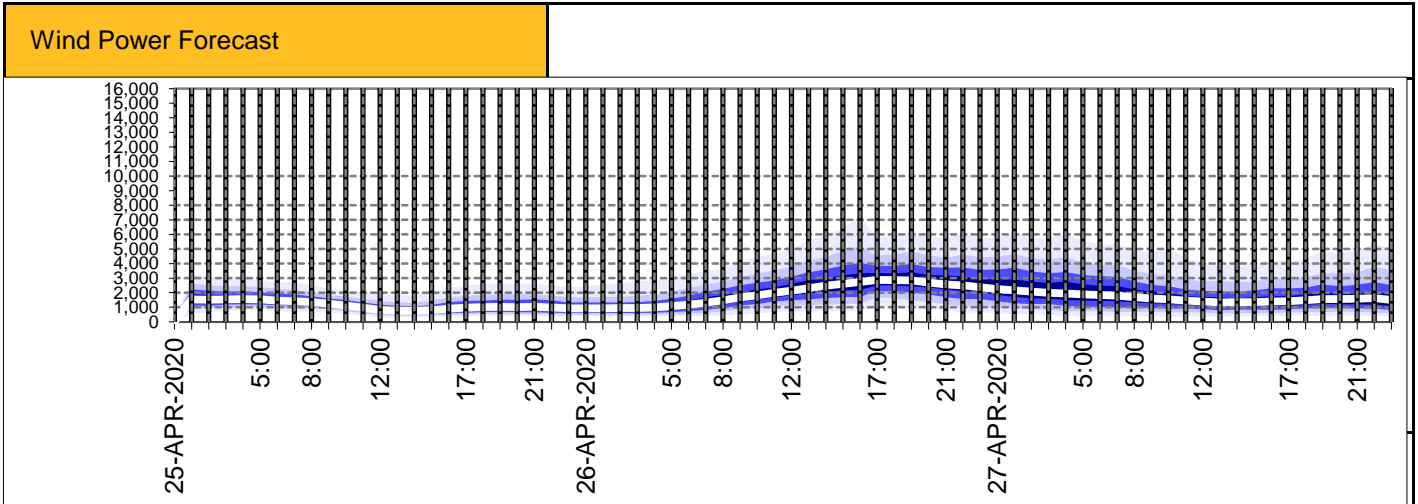
Today's High Level Risk Status Forecast for the next 24h			
General Status		Voltage	
Demand		System Inertia	
System Margins		Weather	
Generation		Transmission	
Active Constraints			

<a href="#">Today's Minimum De-Rated Margin</a>	8637 (SP 38)	
<a href="#">System Warnings</a>	None	
Current BMU Largest Loss Risk	Generation	1260 MW
	Demand	560 MW



Yesterday's Market Summary	
<a href="#">Cash out price (Max)</a>	£39.5/MWh (SP 42)
<a href="#">Cash Out Price (Min)</a>	£0/MWh (SP 37)
<a href="#">Peak Demand Yesterday</a>	28739 MW

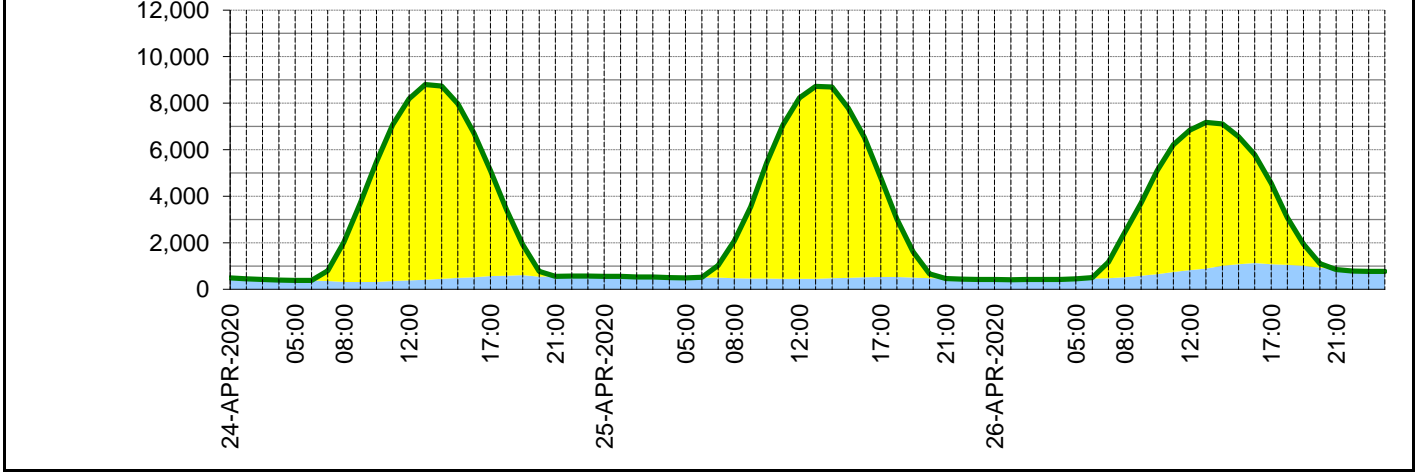
Interconnectors Net Transfer Capacity (MWs)			
Today	Import	Export	
Netherlands (BritNed)	1100	1133	Fully available
France (IFA)	2000	2000	Fully available
Belgium (Nemo)	1013	1013	Fully Available
Ireland (EWIC)	500	530	Fully Available
Northern Ireland (MOYLE)	500	500	Fully Available



**Expected embedded generation (MWs)**

**Embedded Generation Forecast**

	24-APR-2020					25-APR-2020					26-APR-2020						
	05:00	08:00	12:00	17:00	21:00	00:00	05:00	08:00	12:00	17:00	21:00	00:00	05:00	08:00	12:00	17:00	21:00
Solar (MW)	0	1710	7810	4530	1	0	0	1599	7777	4255	0	0	0	1932	6021	3475	0
Wind (MW)	387	316	382	574	556	555	489	478	449	528	459	419	451	511	820	1082	854
STOR (MW)	0	0	0	0	0	0	0	0	0	0	0	0	0	0	0	0	0
<b>Total (MW)</b>	<b>387</b>	<b>2026</b>	<b>8192</b>	<b>5104</b>	<b>557</b>	<b>555</b>	<b>489</b>	<b>2077</b>	<b>8226</b>	<b>4783</b>	<b>459</b>	<b>419</b>	<b>451</b>	<b>2443</b>	<b>6841</b>	<b>4557</b>	<b>854</b>



Weather	Source	Commentary
Latest forecast (Summary)	<a href="#">Met Office</a> <a href="#">SEPA</a> <a href="#">Natural Resources Wales</a>	<b>Today:</b>  A few showers for the southwest and Wales, else most places dry with warm sunny spells after low cloud clears, but remaining dull and misty near some coasts.
		<b>Tonight:</b>  Clear spells with a few fog patches in the southeast, perhaps with an isolated frost. Cloudier further north with a few showers.
General Weather Concerns  e.g. wind, rain, snow, flooding, GB Weather Warnings	<a href="#">Met Office Weather Warnings</a> <a href="#">SEPA</a> <a href="#">Natural Resources Wales</a>	<b>UK Weather Warnings</b> None   <b>UK Flood Warnings:</b> None

*Contains public sector information licensed under the Open Government Licence v1.0*

Further Information	
BM Reports	<a href="https://www.bmreports.com">https://www.bmreports.com</a>
System Balancing Reports	<a href="https://www.nationalgrideso.com/balancing-data/system-balancing-reports">https://www.nationalgrideso.com/balancing-data/system-balancing-reports</a>
Forecast Volumes and Costs	<a href="https://www.nationalgrideso.com/balancing-data/forecast-volumes-and-costs">https://www.nationalgrideso.com/balancing-data/forecast-volumes-and-costs</a>
NGESO Insights	<a href="https://www.nationalgrideso.com/insights">https://www.nationalgrideso.com/insights</a>