

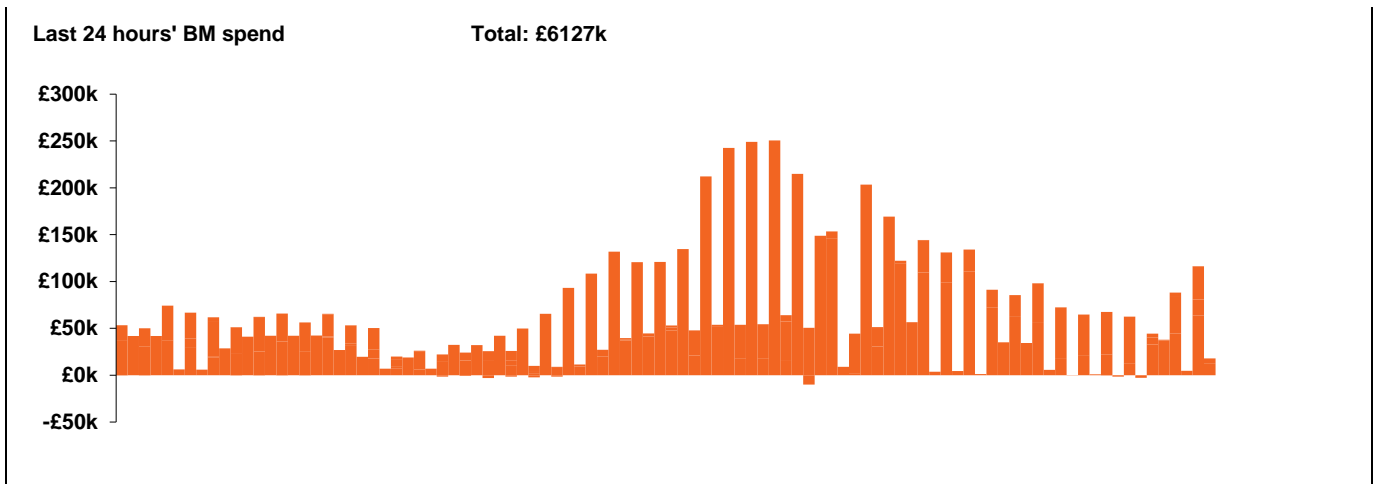
**National Electricity  
Transmission System Status Report**



**National Electricity Transmission System Status Report**  
Tuesday 21 April 2020

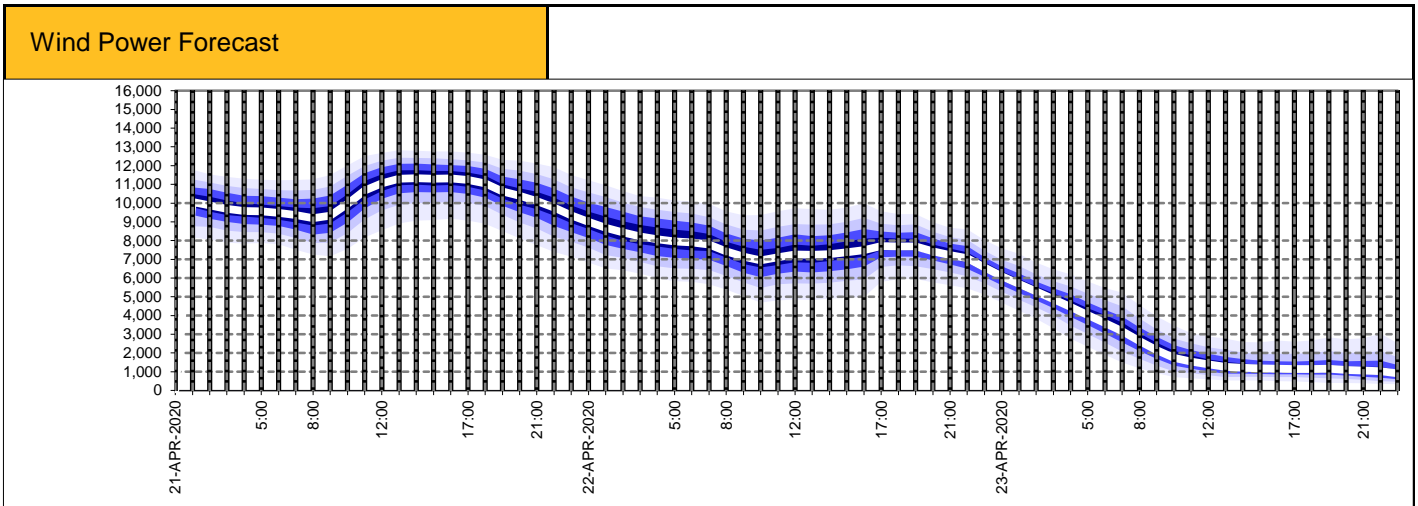
Today's High Level Risk Status Forecast for the next 24h			
General Status		Voltage	
Demand		System Inertia	
System Margins		Weather	
Generation		Transmission	
Active Constraints			

<a href="#">Today's Minimum De-Rated Margin</a>	15784.88 (SP 42)	
<a href="#">System Warnings</a>	None	
Current BMU Largest Loss Risk	Generation	1260 MW
	Demand	560 MW



Yesterday's Market Summary	
<a href="#">Cash out price (Max)</a>	£44.75/MWh (SP 42, 45)
<a href="#">Cash Out Price (Min)</a>	£-65.00/MWh (SP 33)
<a href="#">Peak Demand Yesterday</a>	27,557 MW

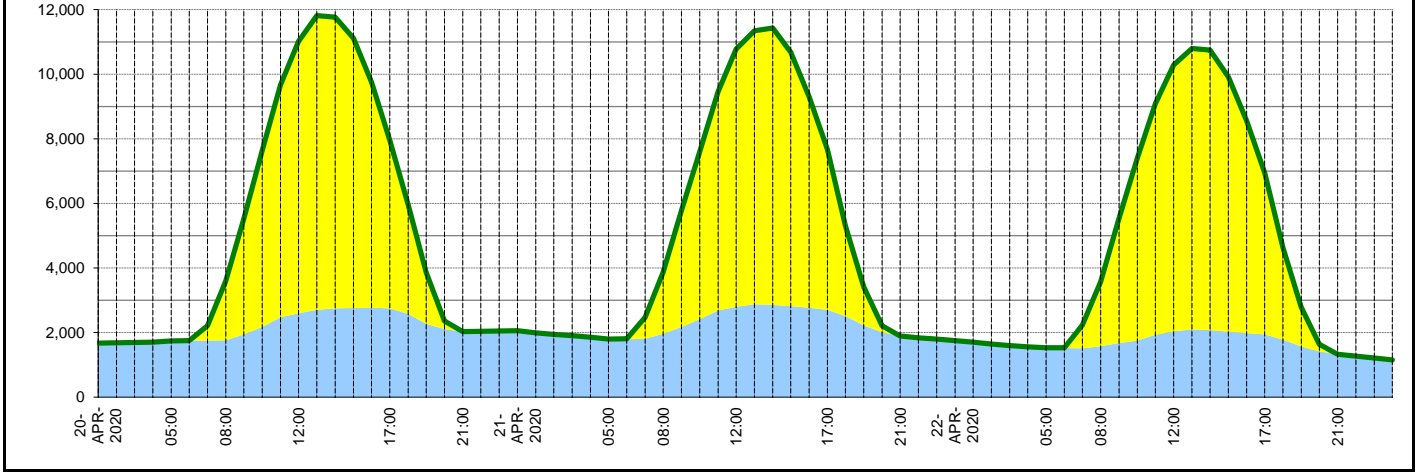
Interconnectors Net Transfer Capacity (MWs)			
Today	Import	Export	
Netherlands (BritNed)	1100	1133	Fully available
France (IFA)	2000	2000	Fully available
Belgium (Nemo)	1013	1013	Fully Available
Ireland (EWIC)	500	530	Fully Available
Northern Ireland (MOYLE)	500	500	Fully Available



### Expected embedded generation (MWs)

#### Embedded Generation Forecast

	20-APR-2020					21-APR-2020					22-APR-2020						
	05:00	08:00	12:00	17:00	21:00	00:00	05:00	08:00	12:00	17:00	21:00	00:00	05:00	08:00	12:00	17:00	21:00
Solar (MW)	0	1840	8420	5200	2	0	0	1908	7984	4971	0	0	0	2002	8243	5012	0
Wind (MW)	1742	1763	2597	2747	2027	2061	1802	1960	2795	2705	1893	1755	1528	1577	2043	1943	1329
STOR (MW)	0	0	0	0	0	0	0	0	0	0	0	0	0	0	0	0	0
<b>Total (MW)</b>	<b>1742</b>	<b>3603</b>	<b>11017</b>	<b>7947</b>	<b>2029</b>	<b>2061</b>	<b>1802</b>	<b>3868</b>	<b>10779</b>	<b>7676</b>	<b>1893</b>	<b>1755</b>	<b>1528</b>	<b>3579</b>	<b>10286</b>	<b>6955</b>	<b>1329</b>



Weather	Source	Commentary
Latest forecast (Summary)	<a href="#">Met Office</a> <a href="#">SEPA</a> <a href="#">Natural Resources Wales</a>	<p><b>Today:</b></p> <p>Most areas fine and sunny, although cloudier in the far southwest of England with a little rain for parts of Cornwall at first. Brisk easterly winds, but feeling warm in sheltered western parts.</p> <p><b>Tonight:</b></p> <p>Clear skies across most of the country, with the brisk easterly wind preventing a frost away from sheltered Scottish glens. Some patchy cloud forming on hills.</p>
General Weather Concerns e.g. wind, rain, snow, flooding, GB Weather Warnings	<a href="#">Met Office Weather Warnings</a> <a href="#">SEPA</a> <a href="#">Natural Resources Wales</a>	<p><b>UK Weather Warnings</b> None</p> <p><b>UK Flood Warnings:</b> None</p>

*Contains public sector information licensed under the Open Government Licence v1.0*

Further Information	
BM Reports	<a href="https://www.bmreports.com">https://www.bmreports.com</a>
System Balancing Reports	<a href="https://www.nationalgrideso.com/balancing-data/system-balancing-reports">https://www.nationalgrideso.com/balancing-data/system-balancing-reports</a>
Forecast Volumes and Costs	<a href="https://www.nationalgrideso.com/balancing-data/forecast-volumes-and-costs">https://www.nationalgrideso.com/balancing-data/forecast-volumes-and-costs</a>
NGESO Insights	<a href="https://www.nationalgrideso.com/insights">https://www.nationalgrideso.com/insights</a>