

**National Electricity  
Transmission System Status Report**

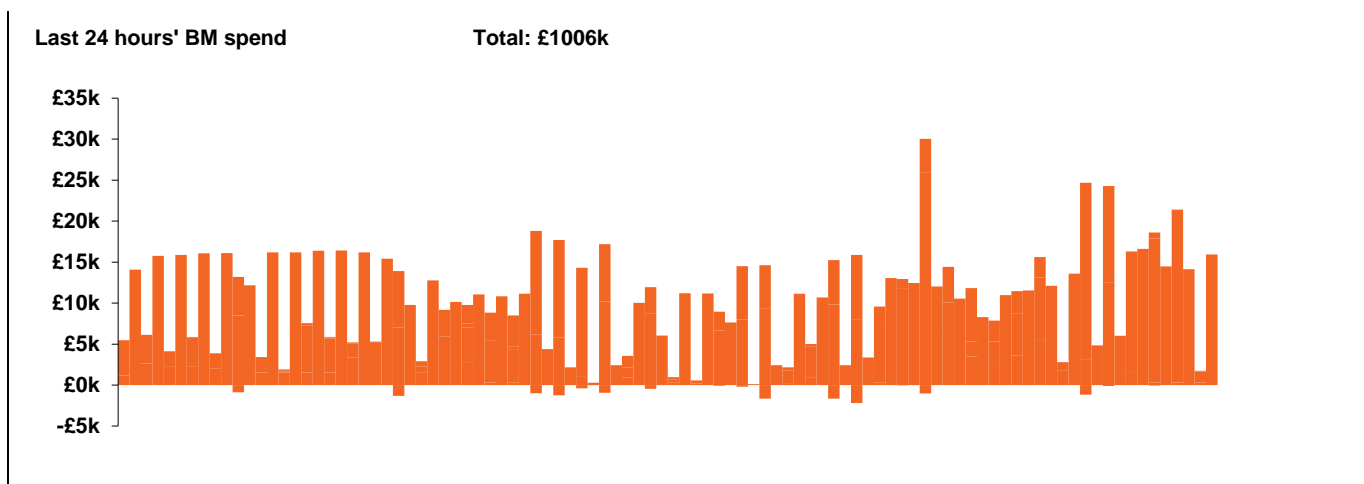


national**grid**ESO

**National Electricity Transmission System Status Report**  
Friday 17 April 2020

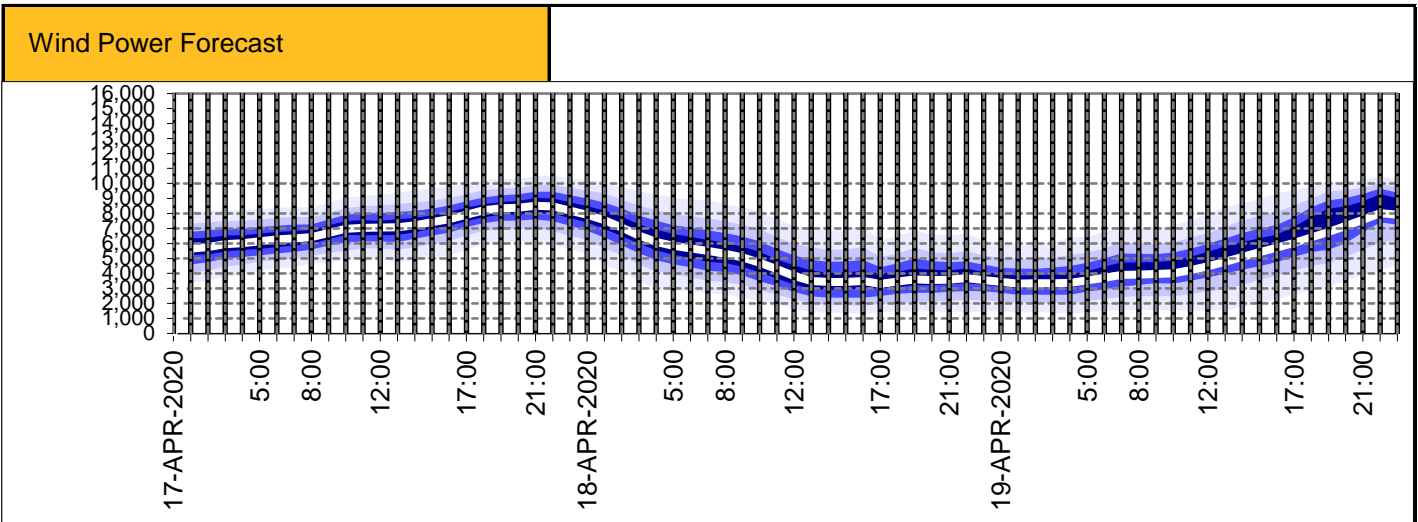
Today's High Level Risk Status Forecast for the next 24h			
General Status		Voltage	
Demand		System Inertia	
System Margins		Weather	
Generation		Transmission	
Active Constraints			

<a href="#">Today's Minimum De-Rated Margin</a>	15551 (SP 37)	
<a href="#">System Warnings</a>	None	
Current BMU Largest Loss Risk	Generation	1260 MW
	Demand	560 MW



Yesterday's Market Summary	
<a href="#">Cash out price (Max)</a>	£42.50/MWh (SP 36)
<a href="#">Cash Out Price (Min)</a>	£0.60/MWh (SP 28)
<a href="#">Peak Demand Yesterday</a>	29123 MW

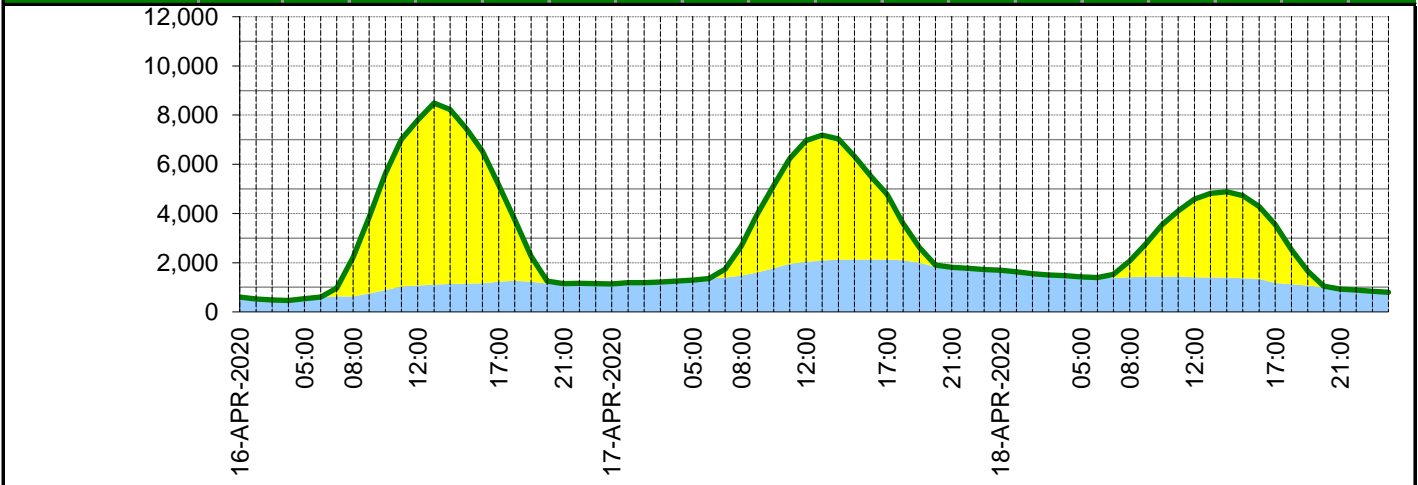
Interconnectors Net Transfer Capacity (MWs)			
Today	Import	Export	
Netherlands (BritNed)	1100	1133	Fully available
France (IFA)	2000	2000	Fully available
Belgium (Nemo)	1013	1013	Fully Available
Ireland (EWIC)	500	530	Fully Available
Northern Ireland (MOYLE)	500	500	Fully Available



**Expected embedded generation (MWs)**

**Embedded Generation Forecast**

	16-APR-2020					17-APR-2020					18-APR-2020						
	05:00	08:00	12:00	17:00	21:00	00:00	05:00	08:00	12:00	17:00	21:00	00:00	05:00	08:00	12:00	17:00	21:00
Solar (MW)	0	1580	6720	3930	1	0	0	1201	4932	2651	0	0	0	660	3184	2381	0
Wind (MW)	535	635	1073	1229	1148	1140	1298	1481	2030	2125	1815	1691	1423	1411	1407	1178	934
STOR (MW)	0	0	0	0	0	0	0	0	0	0	0	0	0	0	0	0	0
<b>Total (MW)</b>	<b>535</b>	<b>2215</b>	<b>7793</b>	<b>5159</b>	<b>1149</b>	<b>1140</b>	<b>1298</b>	<b>2682</b>	<b>6962</b>	<b>4776</b>	<b>1815</b>	<b>1691</b>	<b>1423</b>	<b>2071</b>	<b>4591</b>	<b>3559</b>	<b>934</b>



Weather	Source	Commentary
Latest forecast (Summary)	<a href="#">Met Office</a> <a href="#">SEPA</a> <a href="#">Natural Resources Wales</a>	<p><b>Today:</b> Some rain and showers in the south at first, gradually moving northwards to Wales and central England but weakening. Chilly for many with an easterly breeze, most notable along east facing coasts. Perhaps brightening up later in the south.</p> <p><b>Tonight:</b> Further showers and some thunderstorms running into southern parts during the evening and overnight, southeast England perhaps most at risk. Dry in the north but chilly with some frost.</p>
General Weather Concerns e.g. wind, rain, snow, flooding, GB Weather Warnings	<a href="#">Met Office Weather Warnings</a> <a href="#">SEPA</a> <a href="#">Natural Resources Wales</a>	<p><b>UK Weather Warnings</b> None</p> <p><b>UK Flood Warnings:</b> 0 Flood Warnings in England 0 Flood Warnings in Wales 0 Flood Warnings in Scotland</p>

*Contains public sector information licensed under the Open Government Licence v1.0*

Further Information	
BM Reports	<a href="https://www.bmreports.com">https://www.bmreports.com</a>
System Balancing Reports	<a href="https://www.nationalgrideso.com/balancing-data/system-balancing-reports">https://www.nationalgrideso.com/balancing-data/system-balancing-reports</a>
Forecast Volumes and Costs	<a href="https://www.nationalgrideso.com/balancing-data/forecast-volumes-and-costs">https://www.nationalgrideso.com/balancing-data/forecast-volumes-and-costs</a>
NGESO Insights	<a href="https://www.nationalgrideso.com/insights">https://www.nationalgrideso.com/insights</a>