

**National Electricity  
Transmission System Status Report**

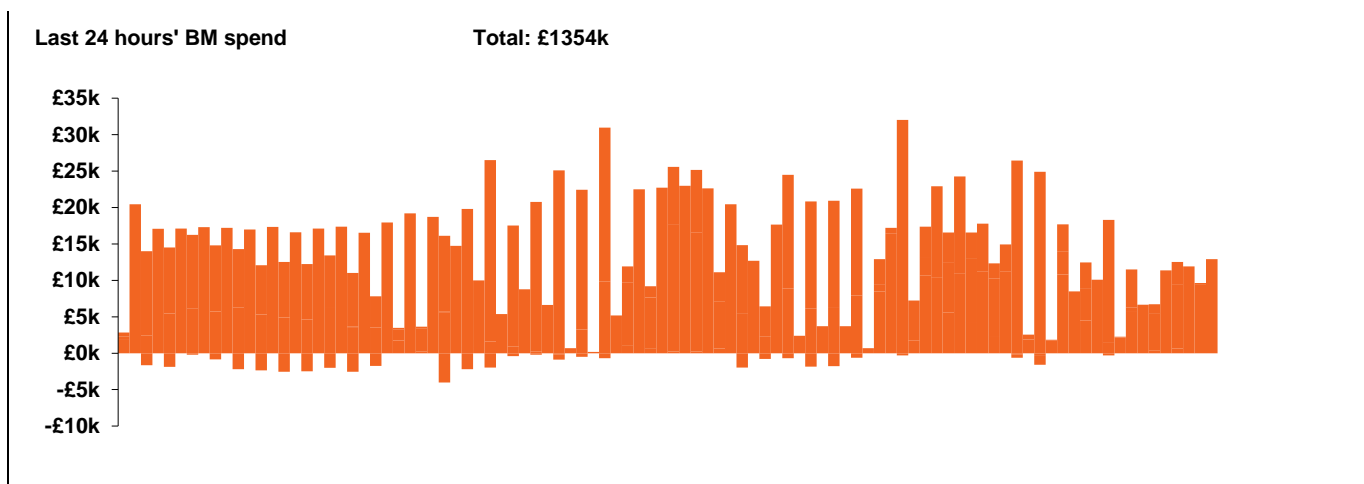


national**grid**ESO

**National Electricity Transmission System Status Report**  
Thursday 16 April 2020

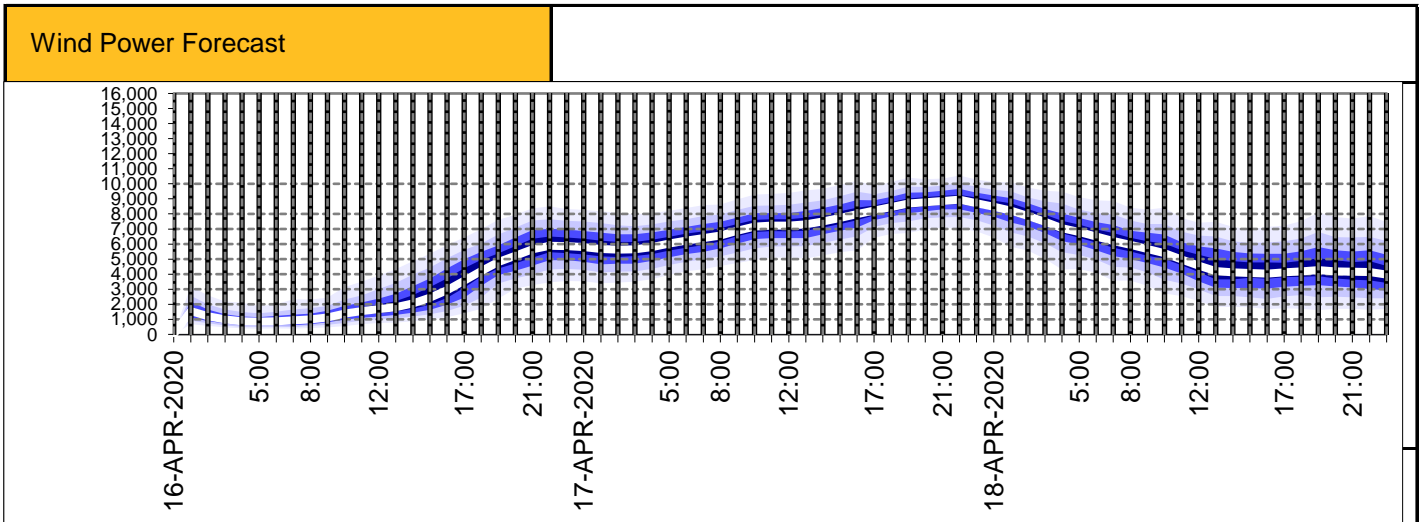
Today's High Level Risk Status Forecast for the next 24h			
General Status		Voltage	
Demand		System Inertia	
System Margins		Weather	
Generation		Transmission	
Active Constraints			

<a href="#">Today's Minimum De-Rated Margin</a>	11904 (SP 36)	
<a href="#">System Warnings</a>	None	
Current BMU Largest Loss Risk	Generation	1260 MW
	Demand	560 MW



Yesterday's Market Summary	
<a href="#">Cash out price (Max)</a>	£38.8/MWh (SP 39)
<a href="#">Cash Out Price (Min)</a>	£1.25/MWh (SP 21)
<a href="#">Peak Demand Yesterday</a>	30117 MW

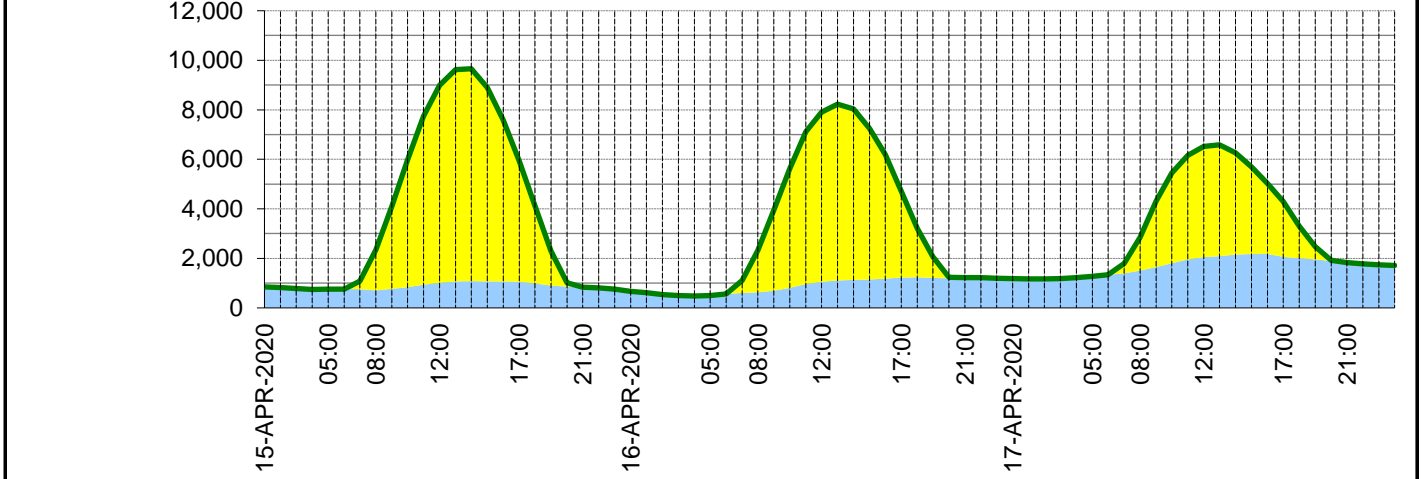
Interconnectors			
Net Transfer Capacity (MWs)			
Today	Import	Export	
Netherlands (BritNed)	1100	1133	Fully available
France (IFA)	2000	2000	Fully available
Belgium (Nemo)	1013	1013	Fully Available
Ireland (EWIC)	500	530	Fully Available
Northern Ireland (MOYLE)	500	500	Fully Available



**Expected embedded generation (MWs)**

**Embedded Generation Forecast**

	15-APR-2020					16-APR-2020					17-APR-2020						
	05:00	08:00	12:00	17:00	21:00	00:00	05:00	08:00	12:00	17:00	21:00	00:00	05:00	08:00	12:00	17:00	21:00
Solar (MW)	0	1640	7970	4870	2	0	0	1692	6844	3485	0	0	0	1351	4477	2229	0
Wind (MW)	760	704	1014	1059	835	661	503	623	1059	1226	1222	1185	1277	1502	2046	2064	1829
STOR (MW)	0	0	0	0	0	0	0	0	0	0	0	0	0	0	0	0	0
<b>Total (MW)</b>	<b>760</b>	<b>2344</b>	<b>8984</b>	<b>5929</b>	<b>837</b>	<b>661</b>	<b>503</b>	<b>2315</b>	<b>7903</b>	<b>4711</b>	<b>1222</b>	<b>1185</b>	<b>1277</b>	<b>2853</b>	<b>6523</b>	<b>4293</b>	<b>1829</b>



Weather	Source	Commentary
Latest forecast (Summary)	<a href="#">Met Office</a> <a href="#">SEPA</a> <a href="#">Natural Resources Wales</a>	<p><b>Today:</b> Most areas will be fine and dry with some warm sunshine. Parts of eastern, central and southern Scotland and northeast England will be cooler and rather cloudy with isolated showers may catch parts of southern England, Wales and the Midlands.</p> <p><b>Tonight:</b> Most areas dry with clear spells. Cloudier for parts of eastern Scotland and northeast England and isolate showers may catch parts of Wales and southern and western England. Turning breezier.</p>
General Weather Concerns e.g. wind, rain, snow, flooding, GB Weather Warnings	<a href="#">Met Office Weather Warnings</a> <a href="#">SEPA</a> <a href="#">Natural Resources Wales</a>	<p><b>UK Weather Warnings</b> None</p> <p><b>UK Flood Warnings:</b> 0 Flood Warnings in England 0 Flood Warnings in Wales 0 Flood Warnings in Scotland</p>

*Contains public sector information licensed under the Open Government Licence v1.0*

Further Information	
BM Reports	<a href="https://www.bmreports.com">https://www.bmreports.com</a>
System Balancing Reports	<a href="https://www.nationalgrideso.com/balancing-data/system-balancing-reports">https://www.nationalgrideso.com/balancing-data/system-balancing-reports</a>
Forecast Volumes and Costs	<a href="https://www.nationalgrideso.com/balancing-data/forecast-volumes-and-costs">https://www.nationalgrideso.com/balancing-data/forecast-volumes-and-costs</a>
NGESO Insights	<a href="https://www.nationalgrideso.com/insights">https://www.nationalgrideso.com/insights</a>