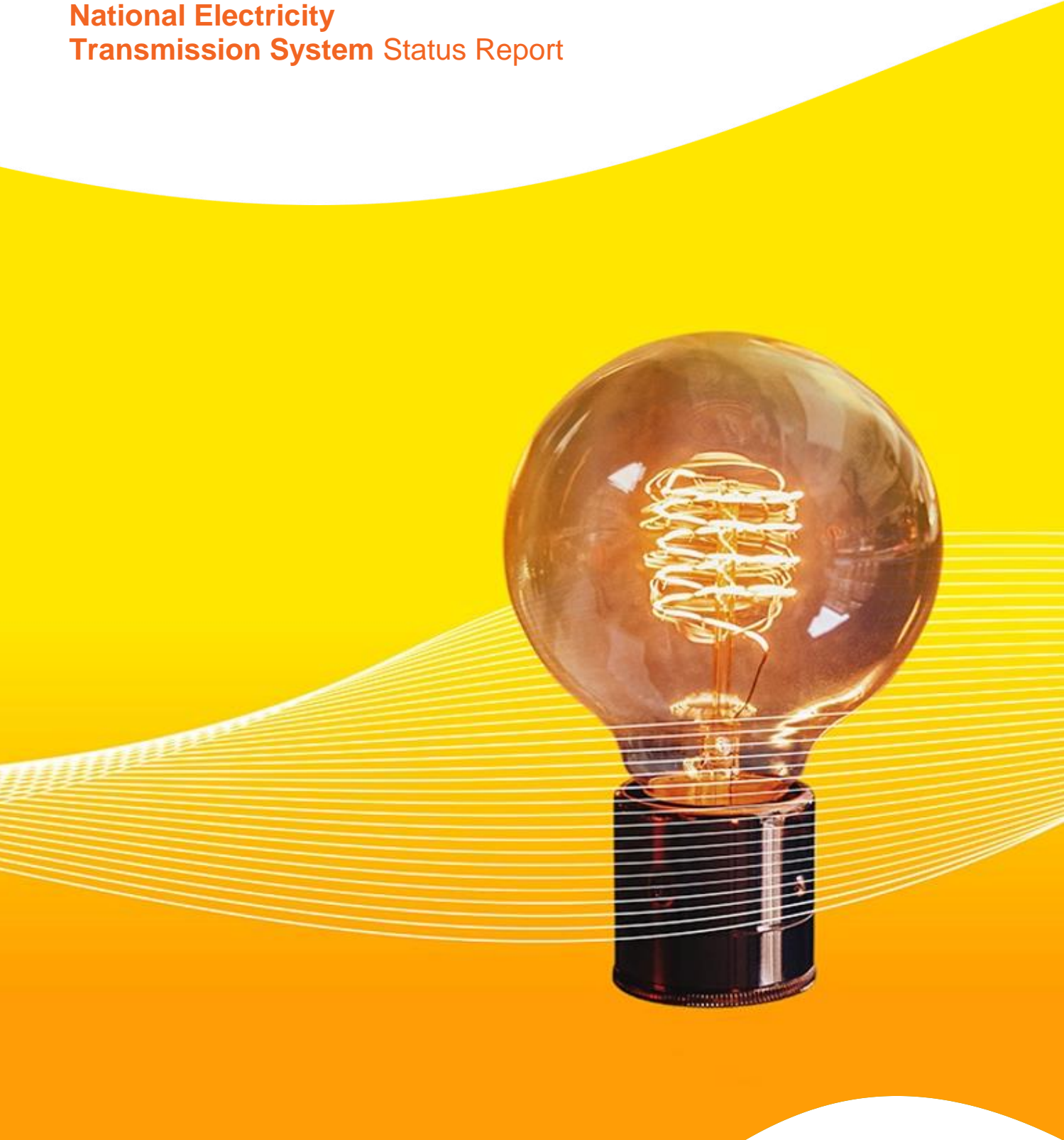


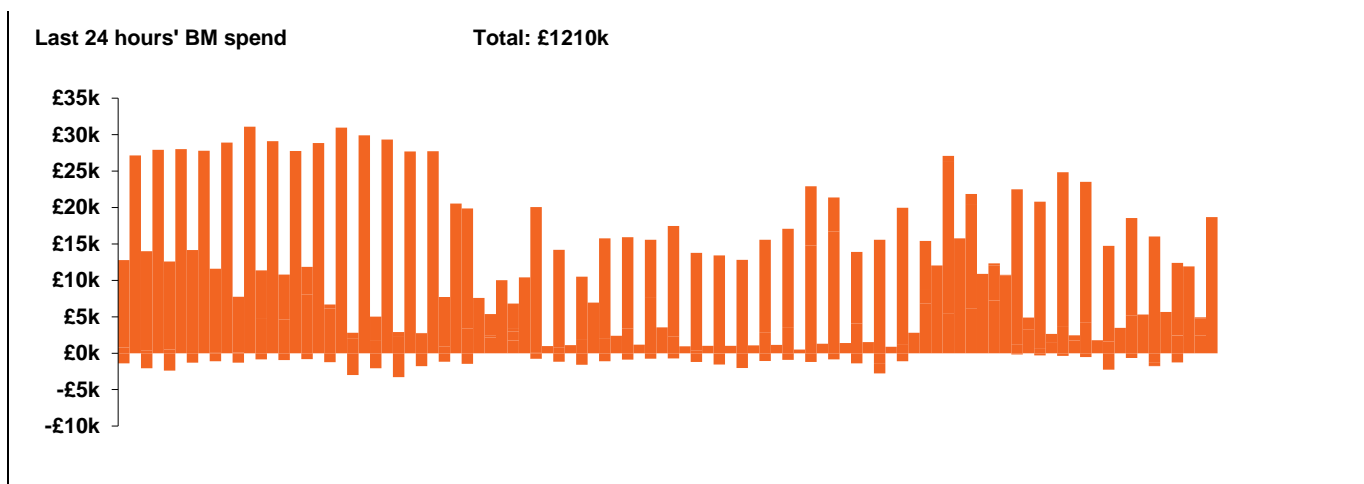
**National Electricity  
Transmission System Status Report**



**National Electricity Transmission System Status Report**  
Wednesday 15 April 2020

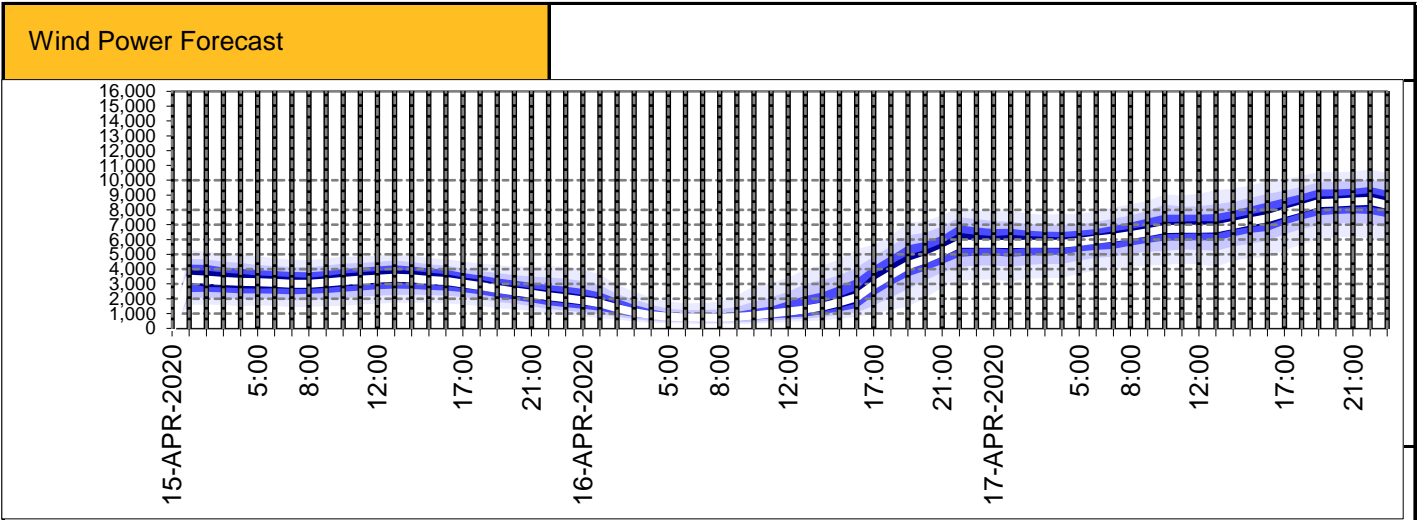
Today's High Level Risk Status Forecast for the next 24h			
General Status		Voltage	
Demand		System Inertia	
System Margins		Weather	
Generation		Transmission	
Active Constraints			

<a href="#">Today's Minimum De-Rated Margin</a>	9429.43 (SP 41)	
<a href="#">System Warnings</a>	None	
Current BMU Largest Loss Risk	Generation	1260 MW
	Demand	560 MW



Yesterday's Market Summary	
<a href="#">Cash out price (Max)</a>	£42.50/MWh (SP 37 38)
<a href="#">Cash Out Price (Min)</a>	£1.25/MWh (SP 46)
<a href="#">Peak Demand Yesterday</a>	31089 MW

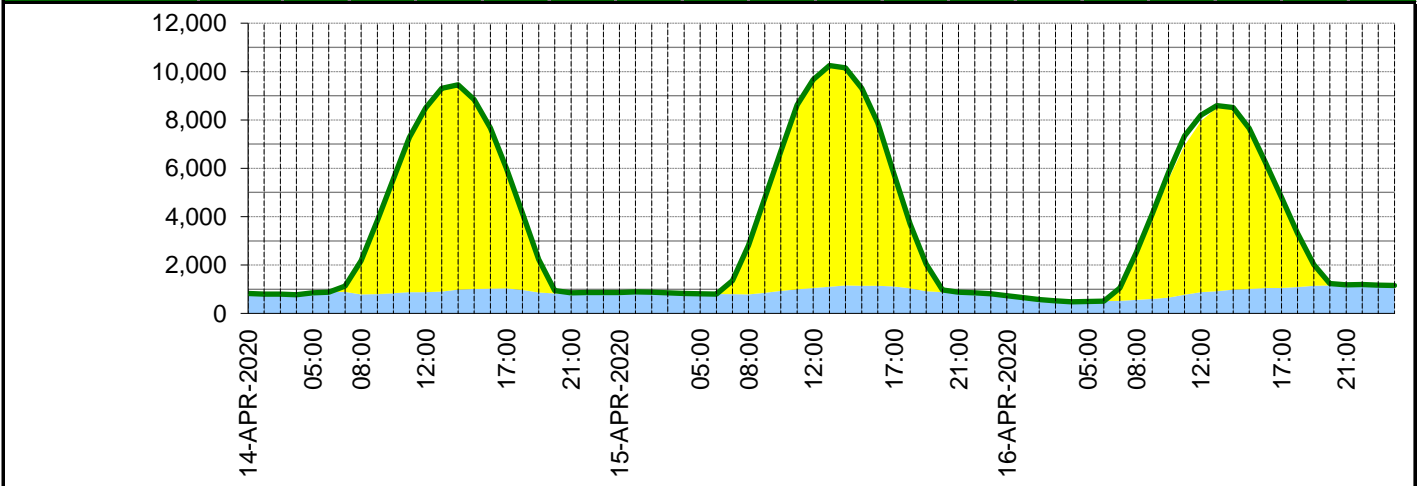
Interconnectors Net Transfer Capacity (MWs)			
Today	Import	Export	
Netherlands (BritNed)	1100	1133	Fully available
France (IFA)	2000	2000	Fully available
Belgium (Nemo)	1013	1013	Fully Available
Ireland (EWIC)	500	530	Fully Available
Northern Ireland (MOYLE)	500	500	Fully Available



### Expected embedded generation (MWs)

#### Embedded Generation Forecast

	14-APR-2020					15-APR-2020					16-APR-2020						
	05:00	08:00	12:00	17:00	21:00	00:00	05:00	08:00	12:00	17:00	21:00	00:00	05:00	08:00	12:00	17:00	21:00
Solar (MW)	0	1390	7630	4960	2	2	0	1903	8567	4821	0	0	0	1777	7073	3861	0
Wind (MW)	855	788	872	1033	851	866	805	785	1052	1111	875	736	487	556	874	1043	1175
STOR (MW)	0	0	0	0	0	0	0	0	0	0	0	0	0	0	0	0	0
<b>Total (MW)</b>	<b>855</b>	<b>2178</b>	<b>8502</b>	<b>5993</b>	<b>853</b>	<b>868</b>	<b>805</b>	<b>2804</b>	<b>9661</b>	<b>5782</b>	<b>875</b>	<b>736</b>	<b>487</b>	<b>2502</b>	<b>8195</b>	<b>4791</b>	<b>1175</b>



Weather	Source	Commentary
Latest forecast (Summary)	<a href="#">Met Office</a> <a href="#">SEPA</a> <a href="#">Natural Resources Wales</a>	<p><b>Today:</b> After a chilly start, most areas will have a fine, dry and bright day. Cloudier, for the far north of Scotland where a little patchy rain is likely. Warmer than yesterday. Light winds for most, but windy across Shetland.</p> <p><b>Tonight:</b> Most areas dry and chilly with long clear periods. Cloudier conditions over northern Scotland, meanwhile, will spread into other parts of Scotland and parts of Northern Ireland and northeast England.</p>
General Weather Concerns e.g. wind, rain, snow, flooding, GB Weather Warnings	<a href="#">Met Office Weather Warnings</a> <a href="#">SEPA</a> <a href="#">Natural Resources Wales</a>	<p><b>UK Weather Warnings</b> None</p> <p><b>UK Flood Warnings:</b> 0 Flood Warnings in England 0 Flood Warnings in Wales 0 Flood Warnings in Scotland</p>

*Contains public sector information licensed under the Open Government Licence v1.0*

Further Information	
BM Reports	<a href="https://www.bmreports.com">https://www.bmreports.com</a>
System Balancing Reports	<a href="https://www.nationalgrideso.com/balancing-data/system-balancing-reports">https://www.nationalgrideso.com/balancing-data/system-balancing-reports</a>
Forecast Volumes and Costs	<a href="https://www.nationalgrideso.com/balancing-data/forecast-volumes-and-costs">https://www.nationalgrideso.com/balancing-data/forecast-volumes-and-costs</a>
NGESO Insights	<a href="https://www.nationalgrideso.com/insights">https://www.nationalgrideso.com/insights</a>