

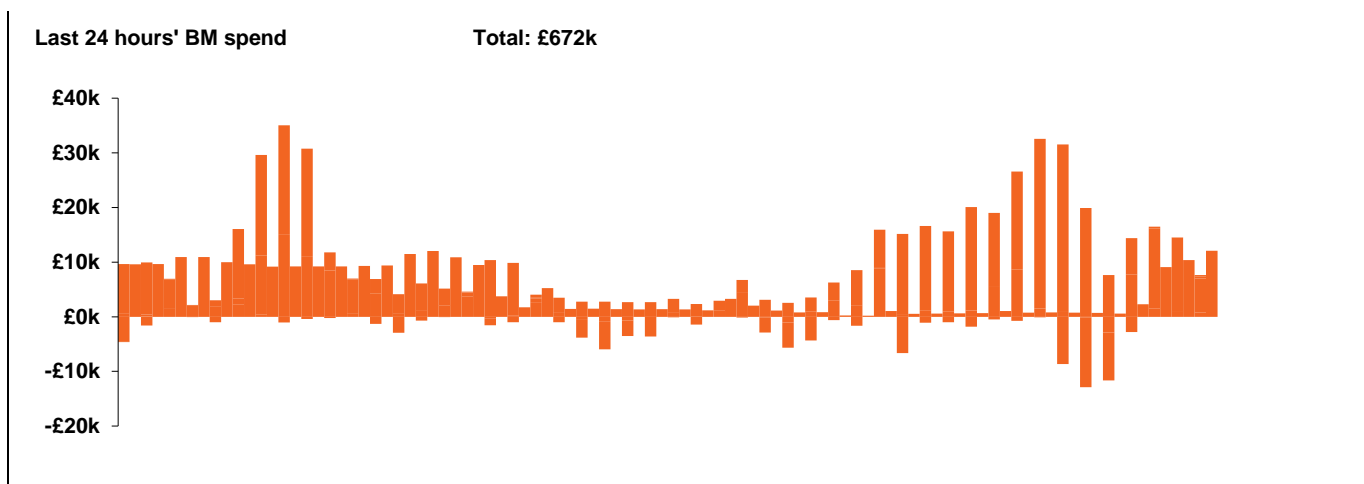
**National Electricity  
Transmission System Status Report**



**National Electricity Transmission System Status Report**  
Friday 27 March 2020

Today's High Level Risk Status Forecast for the next 24h			
General Status		Voltage	
Demand		System Inertia	
System Margins		Weather	
Generation		Transmission	
Active Constraints			

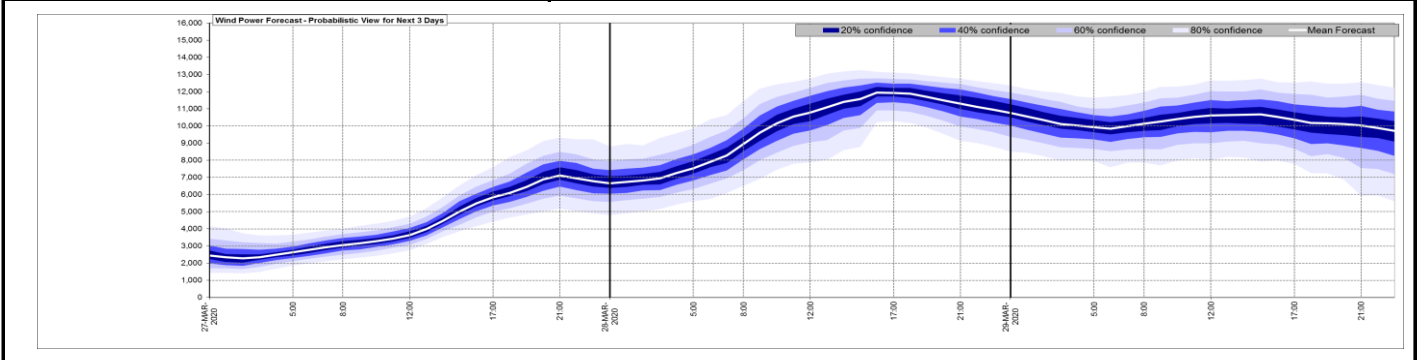
<a href="#">Today's Minimum De-Rated Margin</a>	11149 (SP 38)	
<a href="#">System Warnings</a>	None	
Current BMU Largest Loss Risk	Generation	1260 MW
	Demand	560 MW



Yesterday's Market Summary	
<a href="#">Cash out price (Max)</a>	£50.50/MWh (SP36)
<a href="#">Cash Out Price (Min)</a>	£0.30 /MWh (SP 5)
<a href="#">Peak Demand Yesterday</a>	42201 MW

Interconnectors Net Transfer Capacity (MWs)			
Today	Import	Export	
Netherlands (BritNed)	1100	1133	Fully available
France (IFA)	2000	2000	Fully available.
Belgium (Nemo)	1013	1013	Fully Available
Ireland (EWIC)	500	530	Fully Available
Northern Ireland (MOYLE)	395	500	Partially available.

### Wind Power Forecast



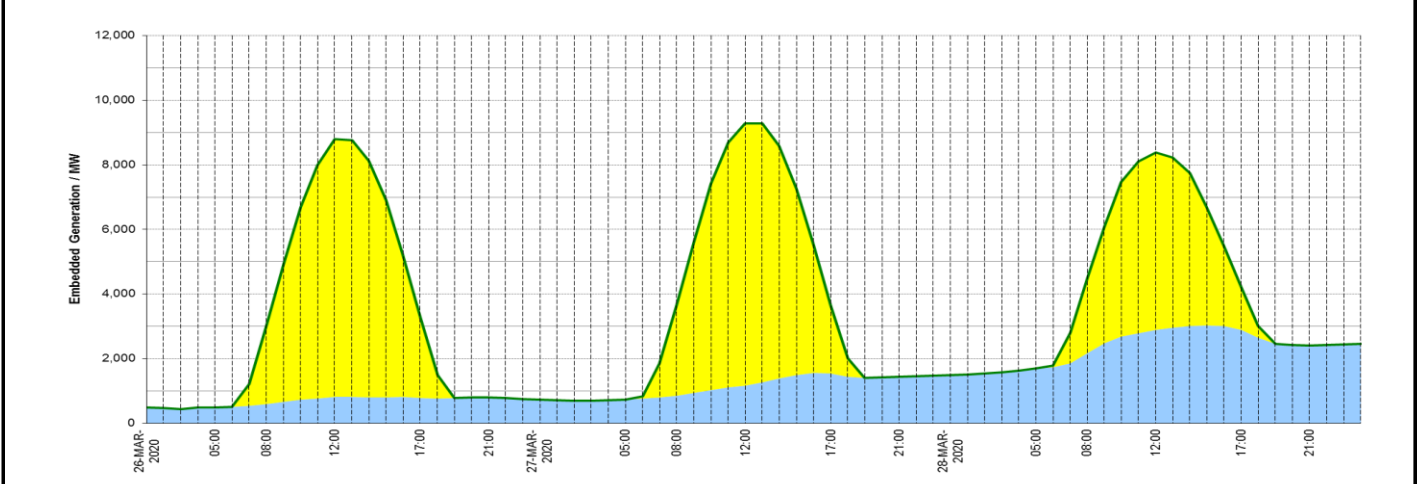
Key:

- 20% confidence
- 40% confidence
- 60% confidence
- 80% confidence
- Mean Forecast

### Expected embedded generation (MWs)

#### Embedded Generation Forecast

	26-MAR-2020					27-MAR-2020					28-MAR-2020						
	05:00	08:00	12:00	17:00	21:00	00:00	05:00	08:00	12:00	17:00	21:00	00:00	05:00	08:00	12:00	17:00	21:00
Solar (MW)	0	2440	7990	2490	0	0	0	2828	8126	2127	0	0	0	2299	5491	1307	0
Wind (MW)	496	601	812	791	806	738	732	858	1158	1546	1442	1484	1690	2166	2887	2897	2409
STOR (MW)	0	0	0	0	0	0	0	0	0	0	0	0	0	0	0	0	0
<b>Total (MW)</b>	<b>496</b>	<b>3041</b>	<b>8802</b>	<b>3281</b>	<b>806</b>	<b>738</b>	<b>732</b>	<b>3688</b>	<b>9283</b>	<b>3673</b>	<b>1442</b>	<b>1484</b>	<b>1690</b>	<b>4465</b>	<b>8378</b>	<b>4204</b>	<b>2409</b>



Weather	Source	Commentary
Latest forecast (Summary)	<a href="#">Met Office</a> <a href="#">SEPA</a> <a href="#">Natural Resources Wales</a>	<p><b>Today:</b>                      Remaining rather cloudy across much of Scotland and Northern Ireland with some light rain or drizzle at times. Dry with plenty of sunshine across England and Wales.</p> <p><b>Tonight:</b>                      Band of cloud moving south into northern England, clearing most of Scotland by dawn, but remaining slow moving across Northern Ireland. Dry and mainly clear periods elsewhere.</p>
General Weather Concerns e.g. wind, rain, snow, flooding, GB Weather Warnings	<a href="#">Met Office Weather Warnings</a> <a href="#">SEPA</a> <a href="#">Natural Resources Wales</a>	<p><b>UK Weather Warnings</b>                      Yellow warning of rain</p> <p><b>UK Flood Warnings:</b></p>

*Contains public sector information licensed under the Open Government Licence v1.0*

Further Information	
BM Reports	<a href="https://www.bmreports.com">https://www.bmreports.com</a>
System Balancing Reports	<a href="https://www.nationalgrideso.com/balancing-data/system-balancing-reports">https://www.nationalgrideso.com/balancing-data/system-balancing-reports</a>
Forecast Volumes and Costs	<a href="https://www.nationalgrideso.com/balancing-data/forecast-volumes-and-costs">https://www.nationalgrideso.com/balancing-data/forecast-volumes-and-costs</a>
NGESO Insights	<a href="https://www.nationalgrideso.com/insights">https://www.nationalgrideso.com/insights</a>