

**National Electricity  
Transmission System Status Report**

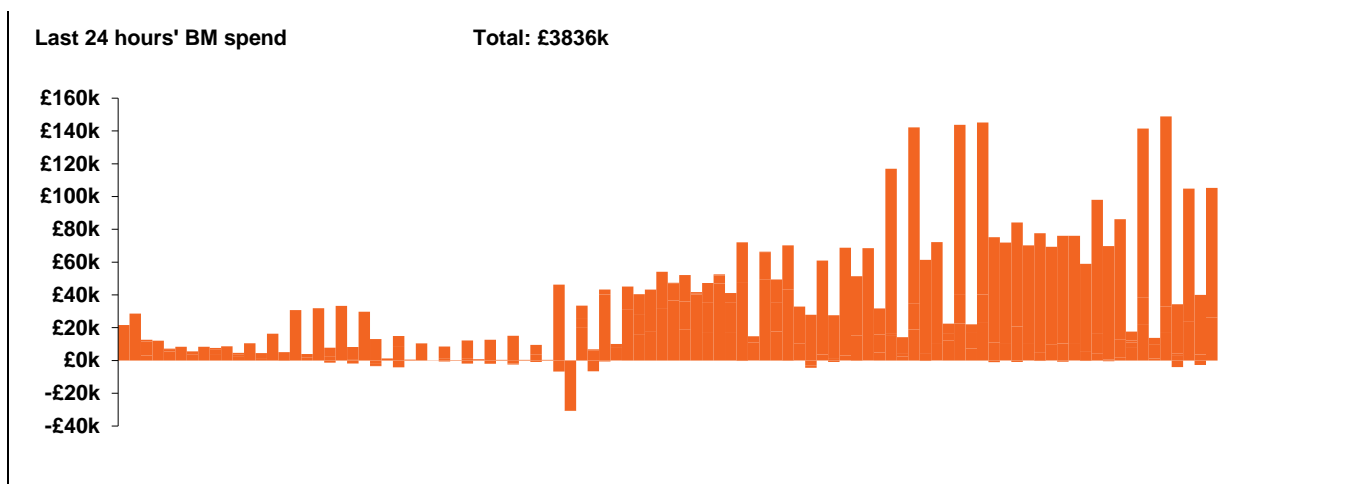


national**grid**ESO

**National Electricity Transmission System Status Report**  
Tuesday 17 March 2020

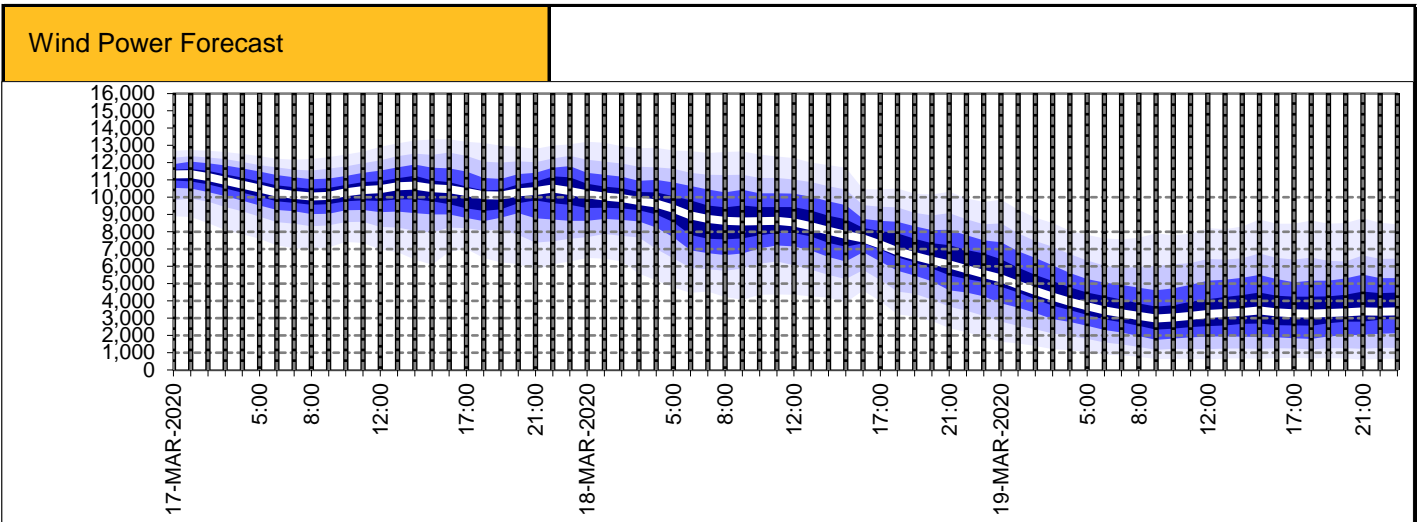
Today's High Level Risk Status Forecast for the next 24h			
General Status		Voltage	
Demand		System Inertia	
System Margins		Weather	
Generation		Transmission	
Active Constraints			

<a href="#">Today's Minimum De-Rated Margin</a>	7421.78 (SP 38)	
<a href="#">System Warnings</a>	None	
Current BMU Largest Loss Risk	Generation	1260 MW
	Demand	560 MW



Yesterday's Market Summary	
<a href="#">Cash out price (Max)</a>	£49.00/MWh (SP38)
<a href="#">Cash Out Price (Min)</a>	-£61.21 /MWh (SP 20)
<a href="#">Peak Demand Yesterday</a>	40,199 MW

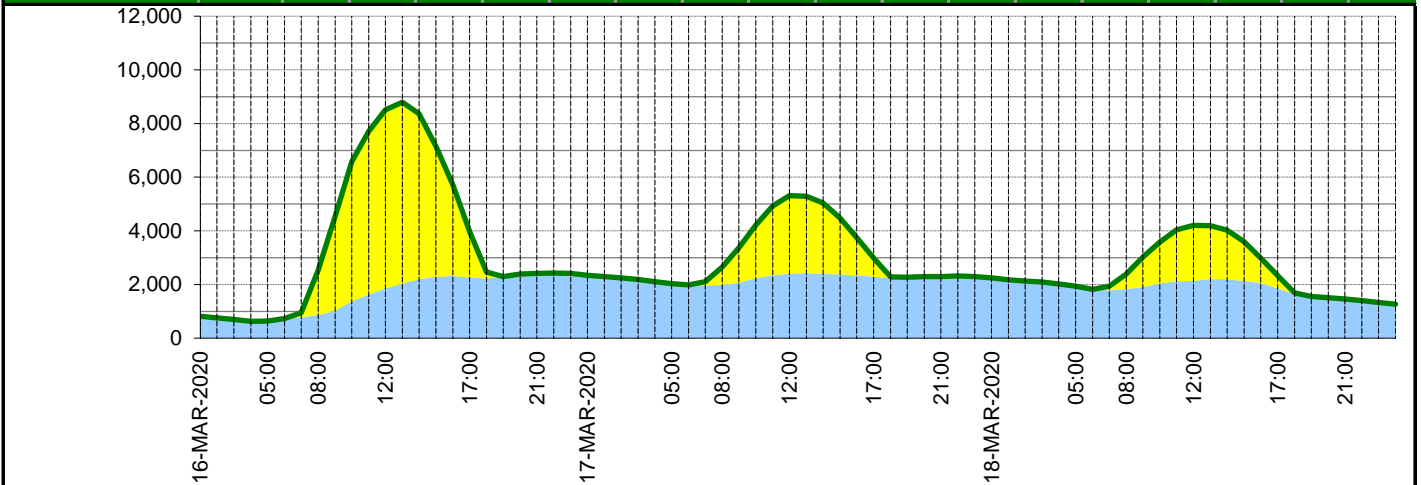
Interconnectors Net Transfer Capacity (MWs)			
Today	Import	Export	
Netherlands (BritNed)	1100	1133	Fully available
France (IFA)	2000	2000	Fully available.
Belgium (Nemo)	1013	1013	Fully Available
Ireland (EWIC)	500	530	Fully Available
Northern Ireland (MOYLE)	395	500	Partially available.



### Expected embedded generation (MWs)

#### Embedded Generation Forecast

	16-MAR-2020					17-MAR-2020					18-MAR-2020						
	05:00	08:00	12:00	17:00	21:00	00:00	05:00	08:00	12:00	17:00	21:00	00:00	05:00	08:00	12:00	17:00	21:00
Solar (MW)	0	1670	6660	1720	0	0	0	665	2915	691	0	0	0	567	2067	474	0
Wind (MW)	641	864	1852	2258	2409	2339	2034	1989	2397	2290	2300	2252	1937	1825	2141	1858	1464
STOR (MW)	0	0	0	0	0	0	0	0	0	0	0	0	0	0	0	0	0
<b>Total (MW)</b>	<b>641</b>	<b>2534</b>	<b>8512</b>	<b>3978</b>	<b>2409</b>	<b>2339</b>	<b>2034</b>	<b>2654</b>	<b>5312</b>	<b>2981</b>	<b>2300</b>	<b>2252</b>	<b>1937</b>	<b>2392</b>	<b>4208</b>	<b>2332</b>	<b>1464</b>



Weather	Source	Commentary
Latest forecast (Summary)	<a href="#">Met Office</a> <a href="#">SEPA</a> <a href="#">Natural Resources Wales</a>	<p><b>Today:</b> The far north chilly, bright but showery, while heavier rain returns to much of Scotland and Northern Ireland. Further south, mostly dry, mild, windy with occasional brightness, but patchy rain and drizzle affects western hills and far north of England.</p> <p><b>Tonight:</b> Rain sinking southwards, allowing colder, showery weather across the north: some heavy showers, wintry on hills. The south and east of England staying mainly dry and mild.</p>
General Weather Concerns e.g. wind, rain, snow, flooding, GB Weather Warnings	<a href="#">Met Office Weather Warnings</a> <a href="#">SEPA</a> <a href="#">Natural Resources Wales</a>	<p><b>UK Weather Warnings</b> None</p> <p><b>UK Flood Warnings:</b> 8 Flood Warnings issued in England</p>

*Contains public sector information licensed under the Open Government Licence v1.0*

Further Information	
BM Reports	<a href="https://www.bmreports.com">https://www.bmreports.com</a>
System Balancing Reports	<a href="https://www.nationalgrideso.com/balancing-data/system-balancing-reports">https://www.nationalgrideso.com/balancing-data/system-balancing-reports</a>
Forecast Volumes and Costs	<a href="https://www.nationalgrideso.com/balancing-data/forecast-volumes-and-costs">https://www.nationalgrideso.com/balancing-data/forecast-volumes-and-costs</a>
NGESO Insights	<a href="https://www.nationalgrideso.com/insights">https://www.nationalgrideso.com/insights</a>