

**National Electricity  
Transmission System Status Report**

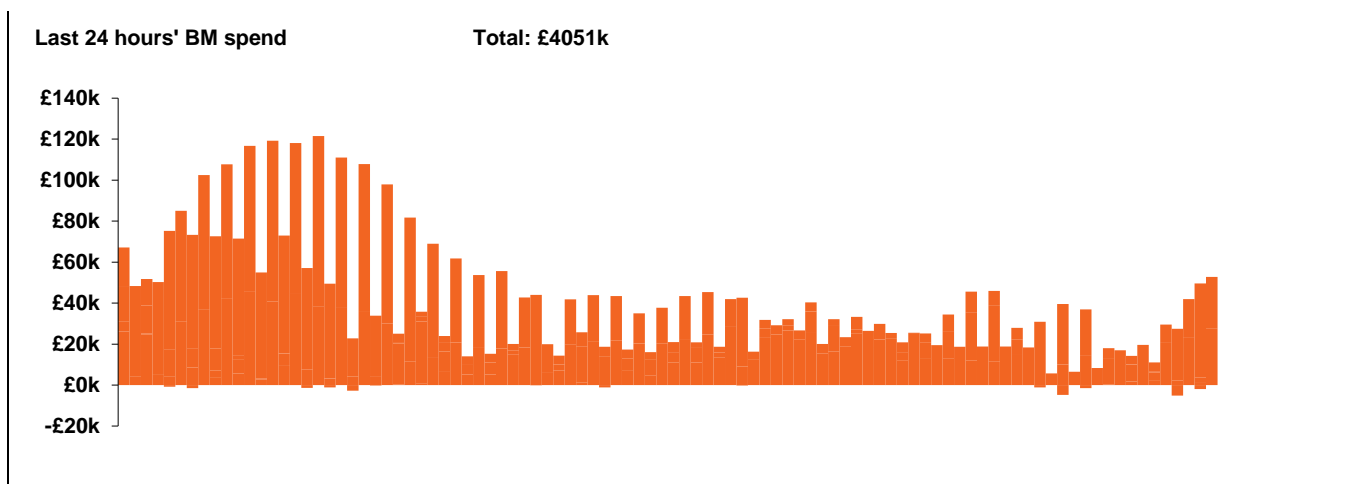


national**grid**ESO

**National Electricity Transmission System Status Report**  
Friday 13 March 2020

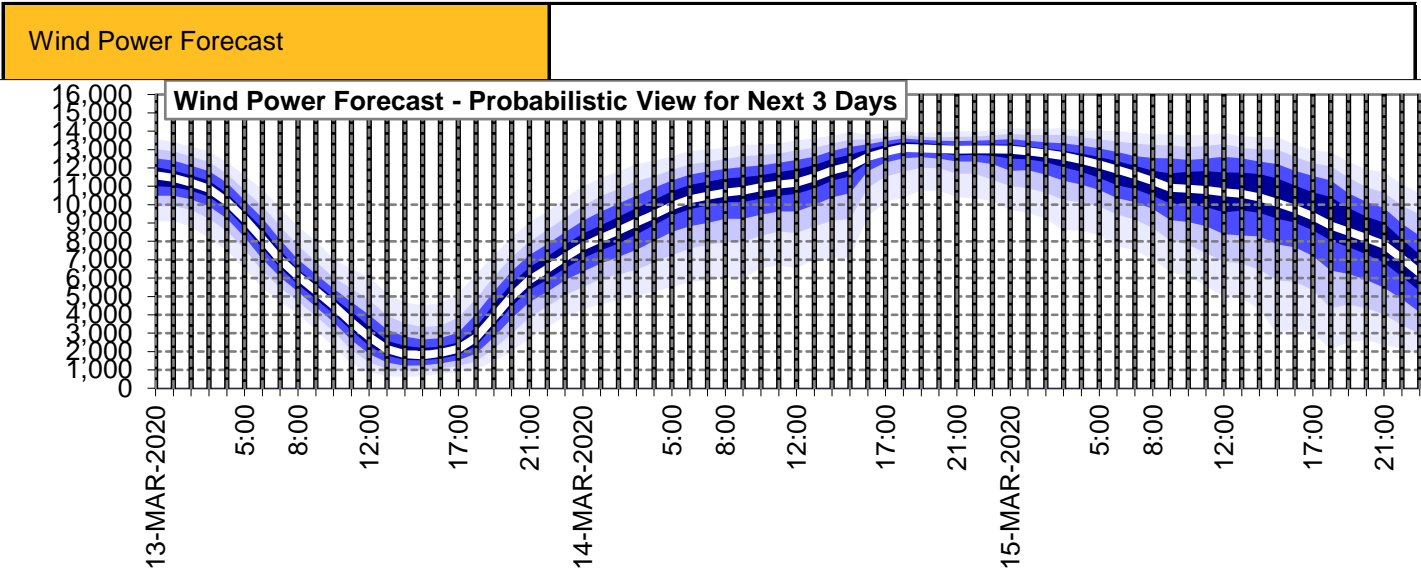
Today's High Level Risk Status Forecast for the next 24h			
General Status		Voltage	
Demand		System Inertia	
System Margins		Weather	
Generation		Transmission	
Active Constraints			

<a href="#">Today's Minimum De-Rated Margin</a>	112(SP 38)	
<a href="#">System Warnings</a>	None	
Current BMU Largest Loss Risk	Generation	1260 MW
	Demand	560 MW / 1100 MW pumping demand



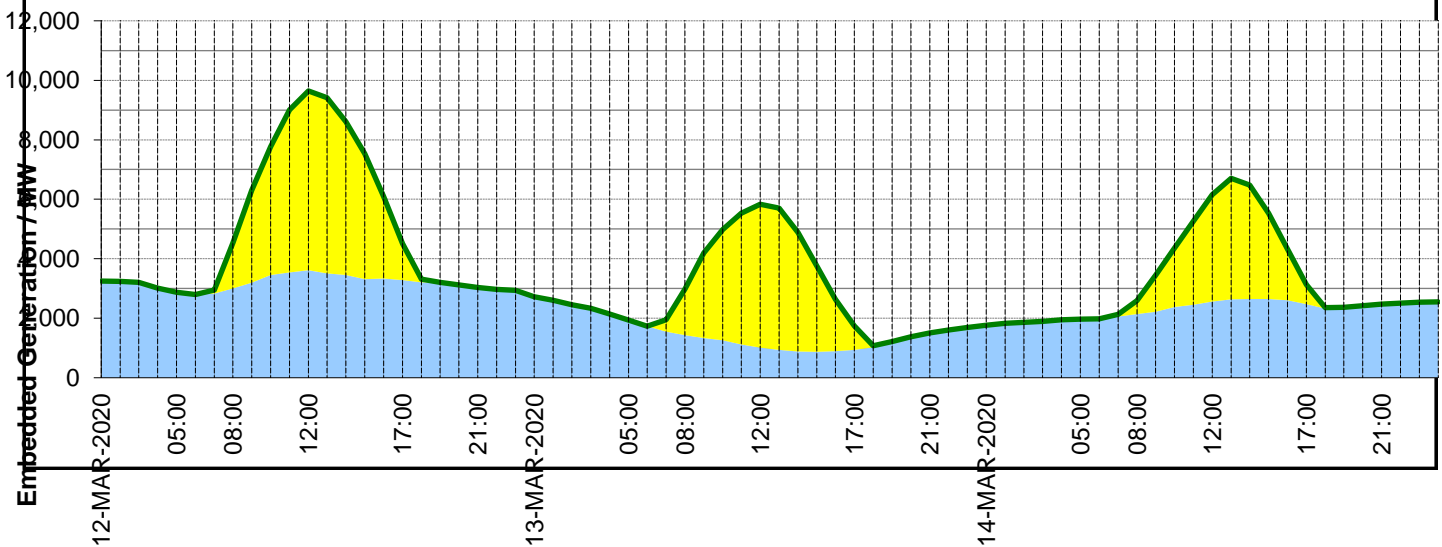
Yesterday's Market Summary	
<a href="#">Cash out price (Max)</a>	£49/MWh (SP38,39)
<a href="#">Cash Out Price (Min)</a>	£-8.00 /MWh (SP 8)
<a href="#">Peak Demand Yesterday</a>	40127MW

Interconnectors Net Transfer Capacity (MWs)			
Today	Import	Export	
Netherlands (BritNed)	1100	1133	Fully available
France (IFA)	2000	2000	Fully available.
Belgium (Nemo)	1013	1013	Fully Available
Ireland (EWIC)	500	530	Fully Available
Northern Ireland (MOYLE)	395	500	Partially available.



**Embedded Generation Forecast**

	12-MAR-2020					13-MAR-2020					14-MAR-2020						
	05:00	08:00	12:00	17:00	21:00	00:00	05:00	08:00	12:00	17:00	21:00	00:00	05:00	08:00	12:00	17:00	21:00
Solar (MW)	0	1530	6030	1220	0	0	0	1543	4826	812	0	0	0	458	3593	648	0
Wind (MW)	2871	3002	3612	3286	3039	2724	1938	1435	1008	936	1509	1769	1967	2137	2564	2480	2476
STOR (MW)	0	0	0	0	0	0	0	0	0	0	0	0	0	0	0	0	0
<b>Total (MW)</b>	<b>2871</b>	<b>4532</b>	<b>9642</b>	<b>4506</b>	<b>3039</b>	<b>2724</b>	<b>1938</b>	<b>2978</b>	<b>5834</b>	<b>1748</b>	<b>1509</b>	<b>1769</b>	<b>1967</b>	<b>2595</b>	<b>6157</b>	<b>3128</b>	<b>2476</b>



Weather	Source	Commentary
Latest forecast (Summary)	<a href="#">Met Office</a> <a href="#">SEPA</a> <a href="#">Natural Resources Wales</a>	<p><b>Today:</b> A few showers around with Scotland seeing the driest conditions but plenty of dry weather with good sunny spells for most. Lighter winds than Thursday and feeling pleasant, particularly in the sunshine. Rain in the southwest later.</p> <p><b>Tonight:</b> Rain moving gradually eastwards overnight, mostly light away from the southwest and higher ground. Becoming windier, particularly later in the far north and northeast where coastal gales likely..</p>
General Weather Concerns e.g. wind, rain, snow, flooding, GB Weather Warnings	<a href="#">Met Office Weather Warnings</a> <a href="#">SEPA</a> <a href="#">Natural Resources Wales</a>	<p><b>UK Weather Warnings</b> <b>None</b></p> <p><b>UK Flood Warnings:</b> 44 Flood Warnings issued in England 2 Flood Warnings issued in Wales 3 Flood Alerts and 12 Flood Warnings issued in Scotland</p>

*Contains public sector information licensed under the Open Government Licence v1.0*

Further Information	
BM Reports	<a href="https://www.bmreports.com">https://www.bmreports.com</a>
System Balancing Reports	<a href="https://www.nationalgrideso.com/balancing-data/system-balancing-reports">https://www.nationalgrideso.com/balancing-data/system-balancing-reports</a>
Forecast Volumes and Costs	<a href="https://www.nationalgrideso.com/balancing-data/forecast-volumes-and-costs">https://www.nationalgrideso.com/balancing-data/forecast-volumes-and-costs</a>
NGESO Insights	<a href="https://www.nationalgrideso.com/insights">https://www.nationalgrideso.com/insights</a>