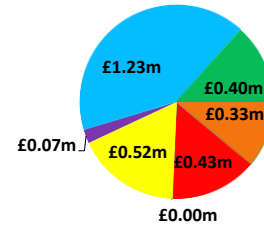
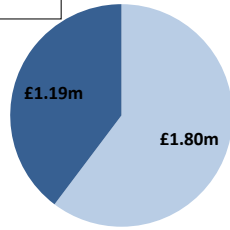


Date: **Sunday 19 Jan 2020**

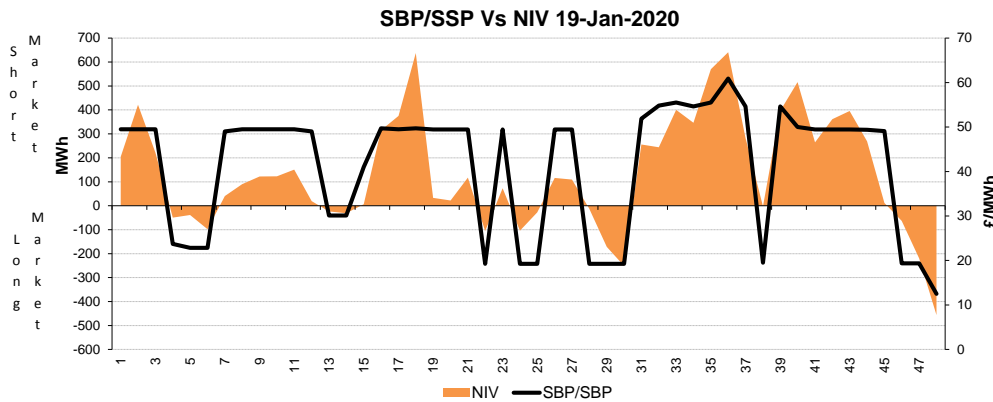
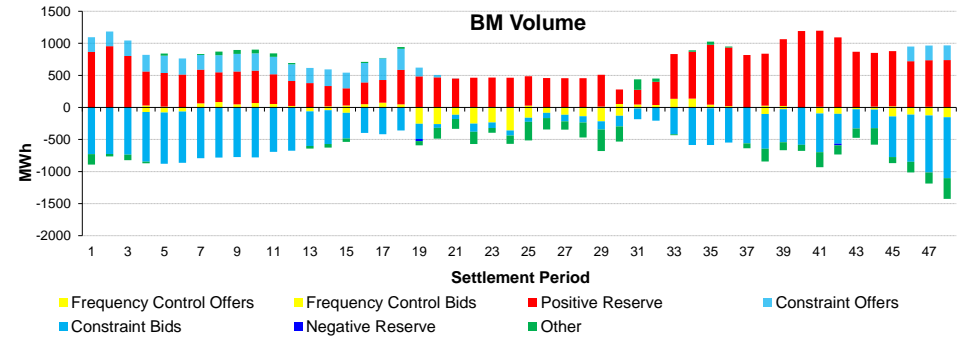
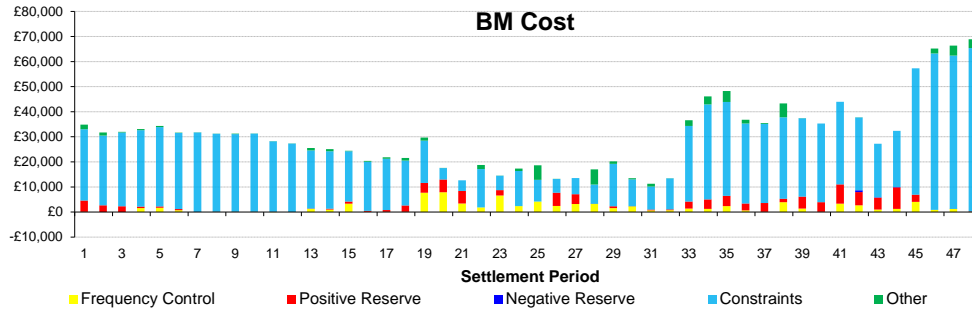
BSUoS Charge Estimate: £2.18/MWh
Total Outturn: £2.98m

Daily Balancing Costs

- BM Cost (Indicative)
- AS Cost (Estimate)



- Energy Imbalance
- Positive Reserve (Op Res + STOR)
- Negative Reserve (Footroom)
- Frequency Control (Response + Fast Reserve)
- Other Reserve (Ancillary Costs Only)
- Constraints (BM & Trades only)
- Other (Reactive + Black Start + BM & AS General)



Commentary

The market was mostly short throughout the day. Around 120MW of STOR was run between 7.30am and 10am, and around 528MW of STOR run between 4.30pm and 7pm. Thermal constraints in Scotland were present all day, and with the unavailability of the Western Link HVDC Interconnector, necessitated BM Actions to manage from morning onwards into the night. Overnight Voltage Control supported by BM Actions in the South East. Overnight Trading secured RoCoF.

Western Link status: Unavailable