

**National Electricity  
Transmission System Status Report**



national**grid**ESO

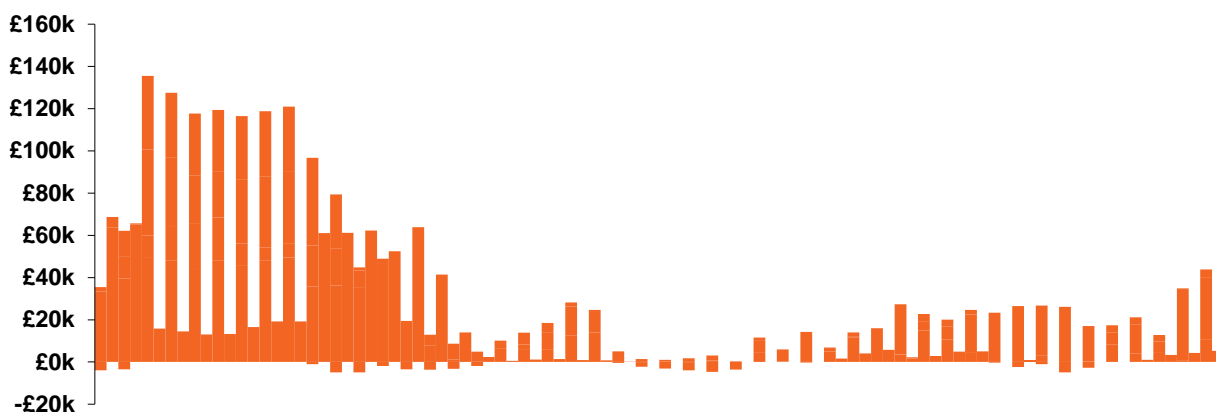
**National Electricity Transmission System Status Report**  
Sunday 13 October 2019

Today's High Level Risk Status Forecast for the next 24h			
General Status		Voltage	
Demand		System Inertia	
System Margins		Weather	
Generation		Transmission	
Active Constraints			

<a href="#">System Warnings</a>	None	
Current BMU Largest Loss Risk	Generation	1260MW
	Demand	560MW

**General Status / Issues / Breaking News**

**Last 24 hours' BM spend** **Total: £2379k**

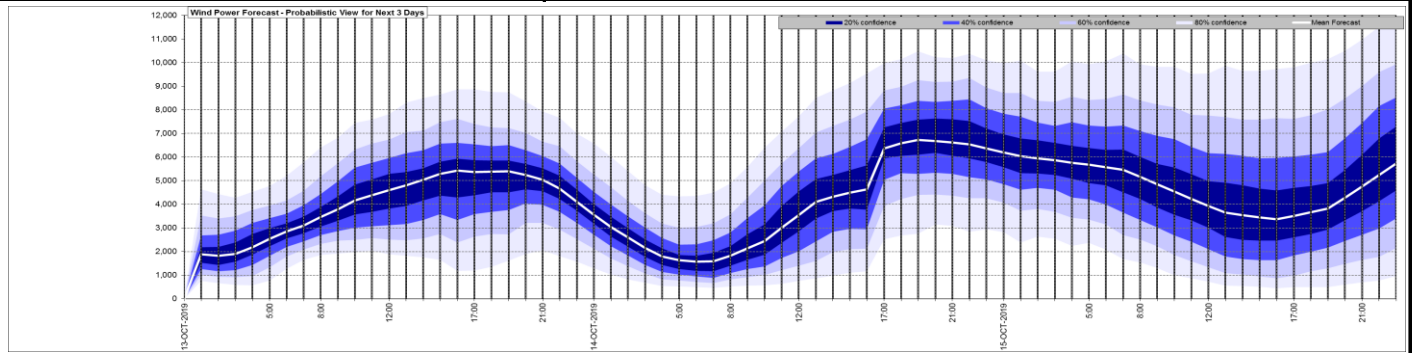


**Yesterday's Market Summary**

<a href="#">Cash out price (Max)</a>	£67.50/MWh (SP 1)
<a href="#">Cash Out Price (Min)</a>	£5.41/MWh (SP 9,10)
<a href="#">Peak Demand Yesterday</a>	32,316 MW

Interconnectors Net Transfer Capacity (MWs)			
Today	Import	Export	
Netherlands (BritNed)	1000	1000	Fully Available
France (IFA)	2000	2000	Fully Available
Belgium (Nemo)	1013	1013	Fully Available
Ireland (EWIC)	500	530	Fully Available
Northern Ireland (MOYLE)	395	500	Partially available.

### Wind Power Forecast



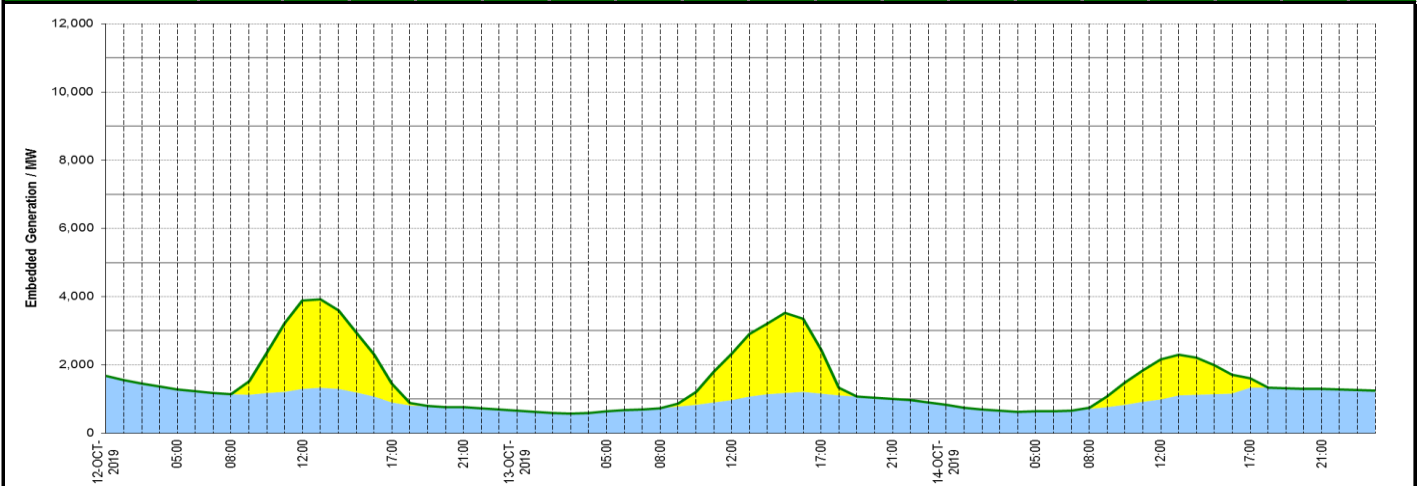
Key:

20% confidence	40% confidence	60% confidence	80% confidence	Mean Forecast
----------------	----------------	----------------	----------------	---------------

### Expected embedded generation (MWs)

#### Embedded Generation Forecast

	12-OCT-2019					13-OCT-2019					14-OCT-2019						
	05:00	08:00	12:00	17:00	21:00	00:00	05:00	08:00	12:00	17:00	21:00	00:00	05:00	08:00	12:00	17:00	21:00
Solar (MW)	0	13	2600	549	0	0	0	0	1362	1279	0	0	0	34	1161	261	0
Wind (MW)	1275	1134	1296	903	759	652	639	733	977	1160	1012	825	633	705	993	1339	1296
STOR (MW)	0	0	0	0	0	0	0	0	0	0	0	0	0	0	0	0	0
<b>Total (MW)</b>	<b>1275</b>	<b>1147</b>	<b>3896</b>	<b>1452</b>	<b>759</b>	<b>652</b>	<b>639</b>	<b>733</b>	<b>2339</b>	<b>2439</b>	<b>1012</b>	<b>825</b>	<b>633</b>	<b>739</b>	<b>2154</b>	<b>1600</b>	<b>1296</b>



Weather	Source	Commentary
Latest forecast (Summary)	<a href="#">Met Office</a> <a href="#">SEPA</a> <a href="#">Natural Resources Wales</a>	<p><b>Today:</b> Rain, some heavy, moving north across England, Wales and southern Scotland, followed by sunny spells and isolated showers in the south. Elsewhere, fog patches clearing, then sunny spells and showers, some heavy in the west. Windy in south and east.</p> <p><b>Tonight:</b> Rain in the north-east clearing, then clear spells and lighter winds, so some frost and fog in central and northern areas. Further rain in the far south by morning.</p>
General Weather Concerns e.g. wind, rain, snow, flooding, GB Weather Warnings	<a href="#">Met Office Weather</a> <a href="#">SEPA</a> <a href="#">Natural Resources Wales</a>	<p><b>Weather Warnings:</b> None</p> <p><b>Flood Warning:</b> None</p>

*Contains public sector information licensed under the Open Government Licence v1.0*

Further Information	
BM Reports	<a href="https://www.bmreports.com">https://www.bmreports.com</a>
System Balancing Reports	<a href="https://www.nationalgrideso.com/balancing-data/system-balancing-reports">https://www.nationalgrideso.com/balancing-data/system-balancing-reports</a>
Forecast Volumes and Costs	<a href="https://www.nationalgrideso.com/balancing-data/forecast-volumes-and-costs">https://www.nationalgrideso.com/balancing-data/forecast-volumes-and-costs</a>
NGESO Insights	<a href="https://www.nationalgrideso.com/insights">https://www.nationalgrideso.com/insights</a>