

**National Electricity  
Transmission System Status Report**



national**grid**ESO

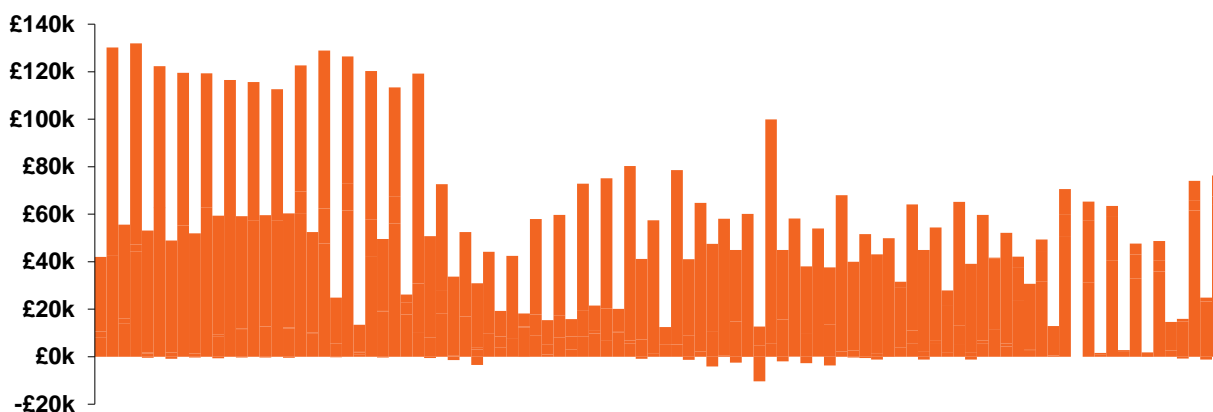
**National Electricity Transmission System Status Report**  
Saturday 12 October 2019

Today's High Level Risk Status Forecast for the next 24h			
General Status		Voltage	
Demand		System Inertia	
System Margins		Weather	
Generation		Transmission	
Active Constraints			

<a href="#">System Warnings</a>	None	
Current BMU Largest Loss Risk	Generation	1260MW
	Demand	560MW

**General Status / Issues / Breaking News**

**Last 24 hours' BM spend** **Total: £5323k**

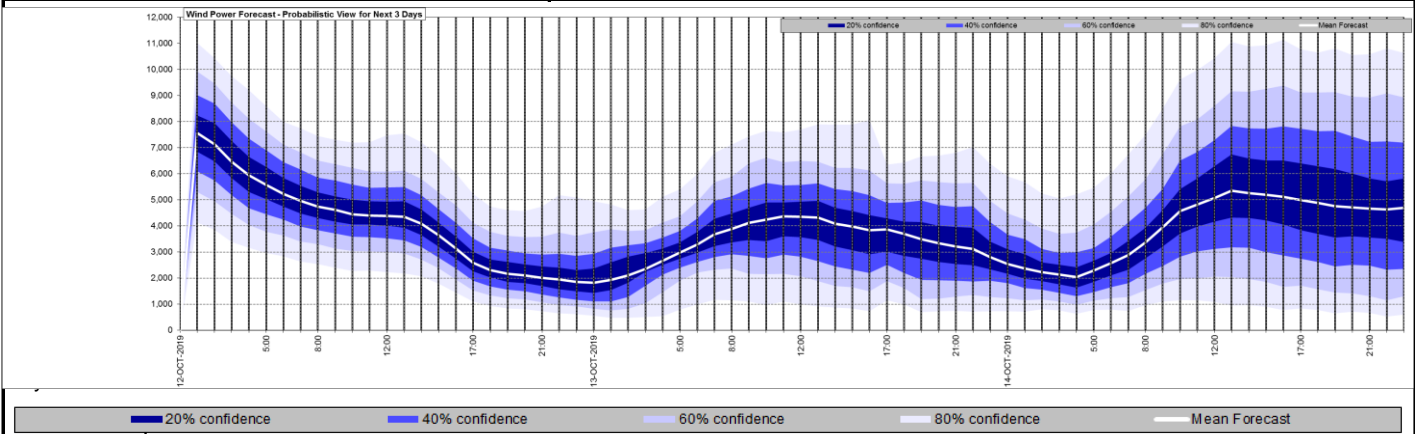


**Yesterday's Market Summary**

<a href="#">Cash out price (Max)</a>	£67.50/MWh (SP 1)
<a href="#">Cash Out Price (Min)</a>	£5.41/MWh (SP 9,10)
<a href="#">Peak Demand Yesterday</a>	32,316 MW

Interconnectors Net Transfer Capacity (MWs)			
Today	Import	Export	
Netherlands (BritNed)	1000	1000	Fully Available
France (IFA)	2000	2000	Fully Available
Belgium (Nemo)	1013	1013	Fully Available
Ireland (EWIC)	500	530	Fully Available
Northern Ireland (MOYLE)	395	500	Partially available.

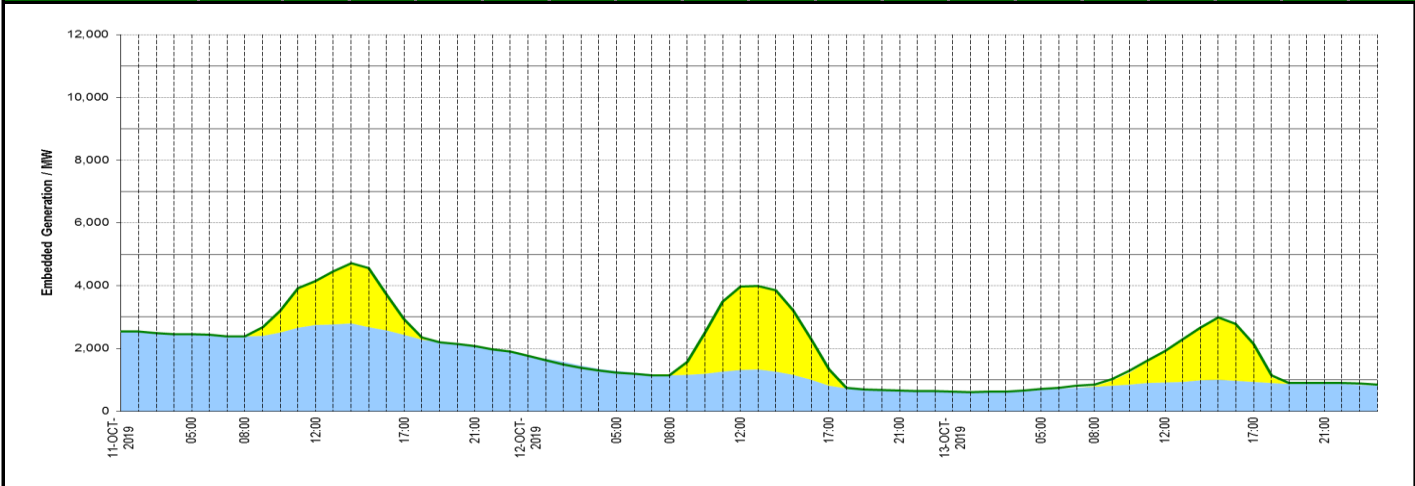
### Wind Power Forecast



### Expected embedded generation (MWs)

#### Embedded Generation Forecast

	11-OCT-2019					12-OCT-2019					13-OCT-2019						
	05:00	08:00	12:00	17:00	21:00	00:00	05:00	08:00	12:00	17:00	21:00	00:00	05:00	08:00	12:00	17:00	21:00
Solar (MW)	0	8	1400	516	0	0	0	23	2668	548	0	0	0	15	985	1164	0
Wind (MW)	2455	2382	2743	2429	2067	1765	1280	1150	1306	822	645	618	676	780	916	935	864
STOR (MW)	0	0	0	0	0	0	0	0	0	0	0	0	0	0	0	0	0
<b>Total (MW)</b>	<b>2455</b>	<b>2390</b>	<b>4143</b>	<b>2945</b>	<b>2067</b>	<b>1765</b>	<b>1236</b>	<b>1148</b>	<b>3966</b>	<b>1330</b>	<b>662</b>	<b>630</b>	<b>711</b>	<b>847</b>	<b>1927</b>	<b>2147</b>	<b>902</b>



Weather	Source	Commentary
Latest forecast (Summary)	<a href="#">Met Office</a> <a href="#">SEPA</a> <a href="#">Natural Resources Wales</a>	<p><b>Today:</b> Southern parts of England and Wales will be mostly cloudy with some rain at times, becoming persistent and heavier this evening. Elsewhere, sunny spells, but also showers, these mostly in the west and north.</p> <p><b>Tonight:</b> A spell of heavy rain for parts of Wales, southern and central England. A few showers in northern UK, but clear spells allowing patchy frost and fog inland</p>
General Weather Concerns e.g. wind, rain, snow, flooding, GB Weather Warnings	<a href="#">Met Office Weather</a> <a href="#">SEPA</a> <a href="#">Natural Resources Wales</a>	<p><b>Weather Warnings:</b> None</p> <p><b>Flood Warning:</b> None</p>

*Contains public sector information licensed under the Open Government Licence v1.0*

Further Information	
BM Reports	<a href="https://www.bmreports.com">https://www.bmreports.com</a>
System Balancing Reports	<a href="https://www.nationalgrideso.com/balancing-data/system-balancing-reports">https://www.nationalgrideso.com/balancing-data/system-balancing-reports</a>
Forecast Volumes and Costs	<a href="https://www.nationalgrideso.com/balancing-data/forecast-volumes-and-costs">https://www.nationalgrideso.com/balancing-data/forecast-volumes-and-costs</a>
NGESO Insights	<a href="https://www.nationalgrideso.com/insights">https://www.nationalgrideso.com/insights</a>