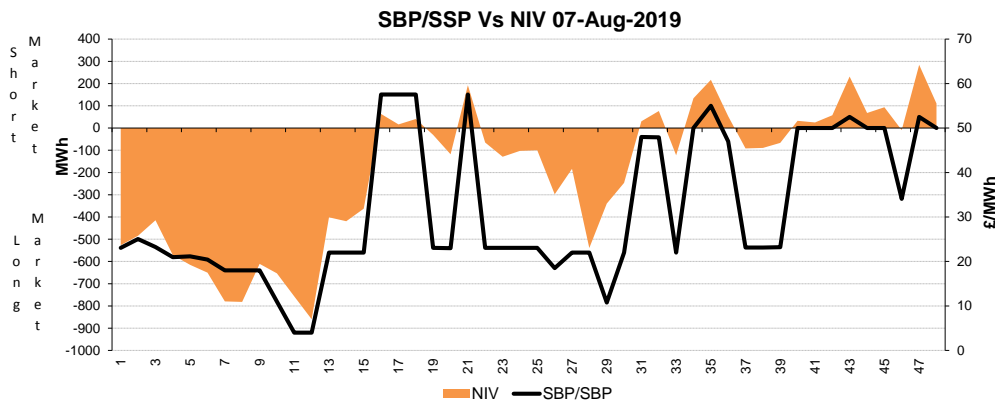
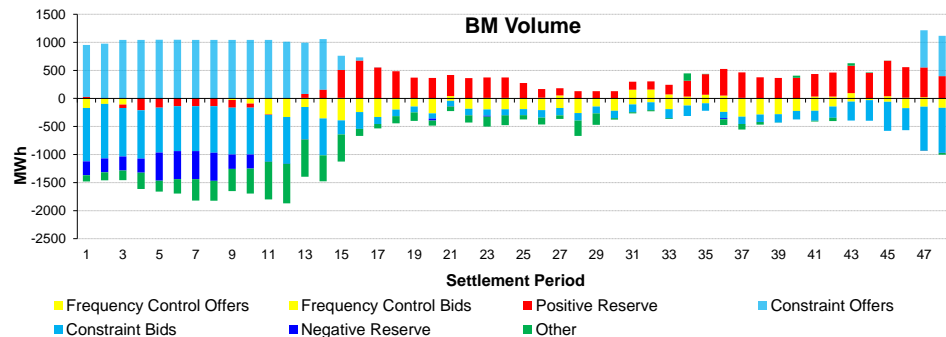
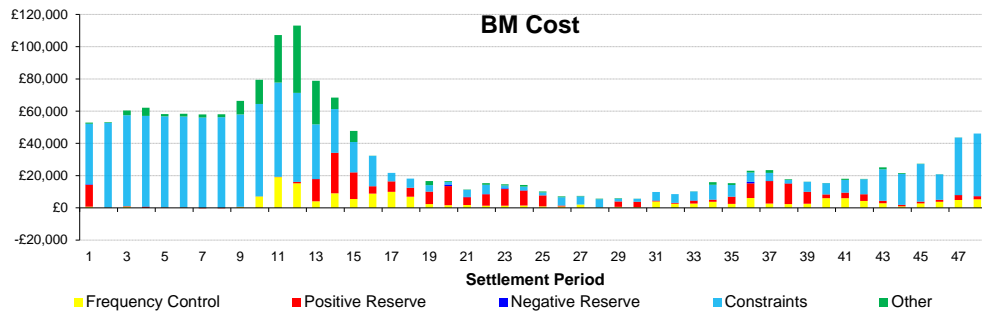
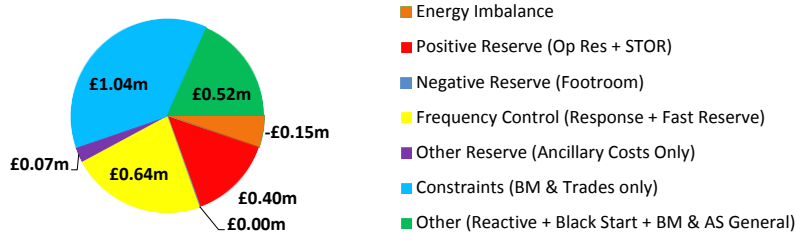
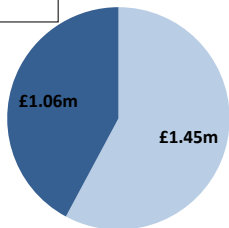


Date: Wednesday 07 Aug 2019

BSUoS Charge Estimate: £2.42/MWh
Total Outturn: £2.51m

Daily Balancing Costs

- BM Cost (Indicative)
- AS Cost (Estimate)



Western Link status: Available

Commentary

The market was on average ~640MWh long between SP 1-12 due to embedded generation forecast overestimation. Interconnector trades were enacted over the early morning for downward margin. System prices of £57.54 were during the morning pick up between SP16-18.

Voltage control issues around the east coast, midlands and South Wales were stabilised through both BM Actions and Trades over the early morning. System inertia and thermal constraints on the south east coast were resolved by BM actions and trades.