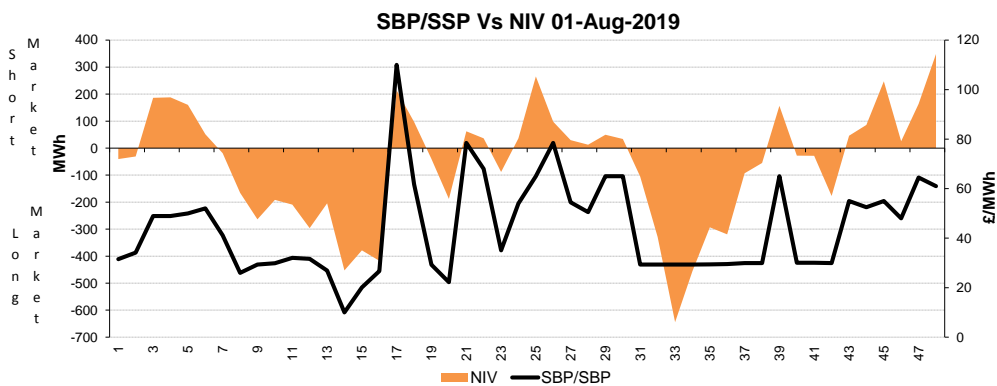
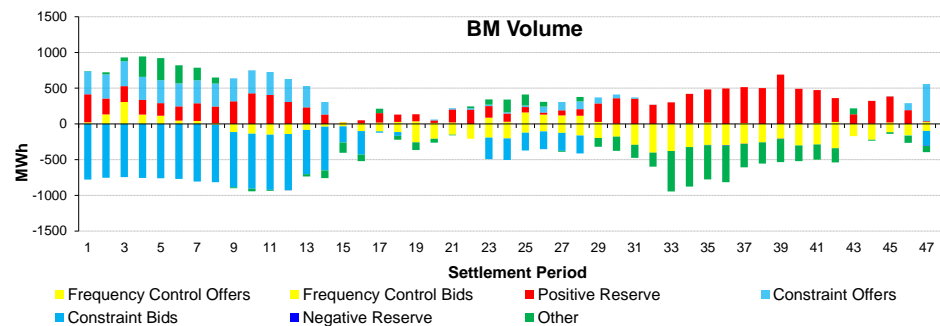
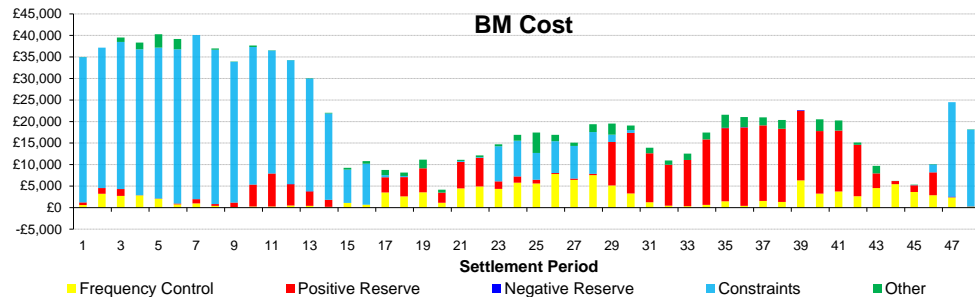
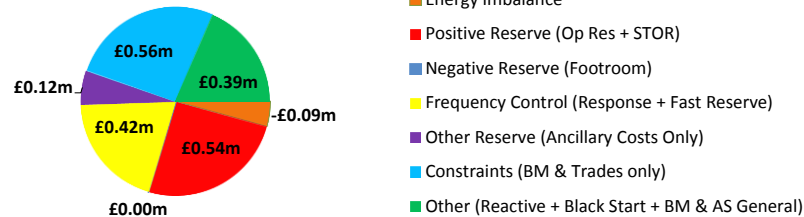
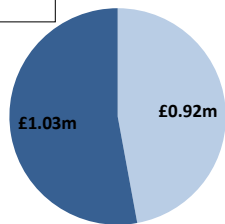


Date: Thursday 01 Aug 2019

BSUoS Charge Estimate: £1.89/MWh  
Total Outturn: £1.95m

# Daily Balancing Costs

- BM Cost (Indicative)
- AS Cost (Estimate)



**Western Link status: Available**

## Commentary

Market was quite volatile over the day due to uncertain weather conditions and NBM STOR was utilised through SPs 16-20 and again 23-28. Trades were taken for margin for the late evening.

System inertia and voltage control issues around the east coast resolved through both trades and BM actions. Constraints around the UK were mitigated by taking actions in the BM and trades over the interconnectors