

**National Electricity  
Transmission System Status Report**

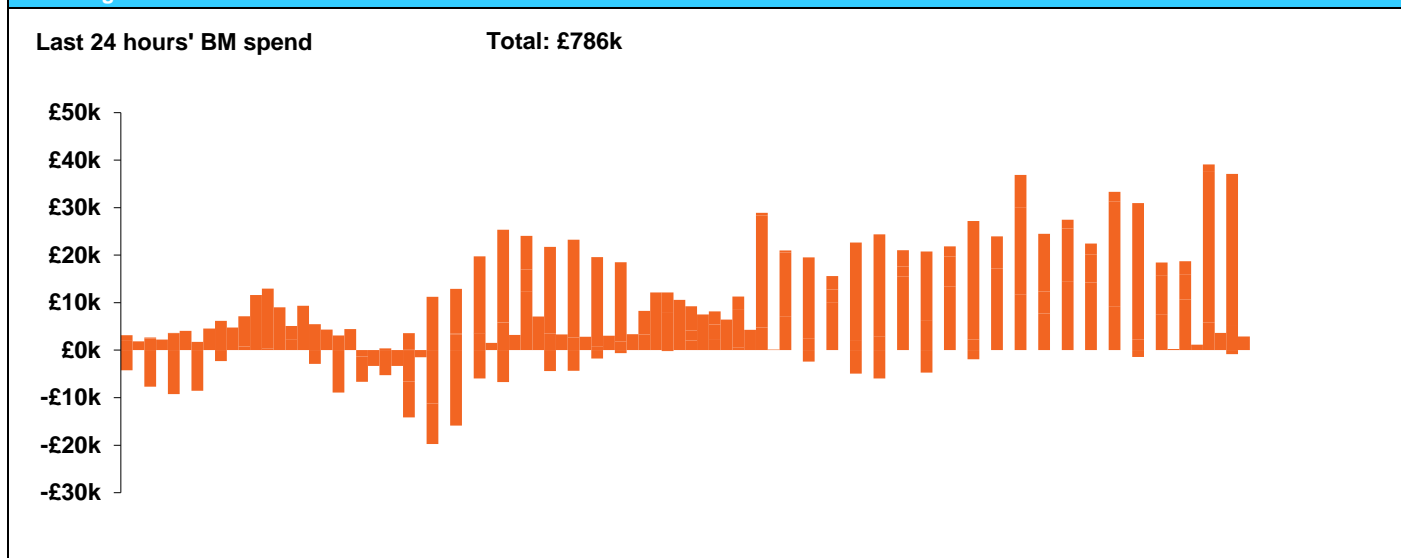


**National Electricity Transmission System Status Report**  
Sunday 28 July 2019

| Today's High Level Risk Status Forecast for the next 24h |  |                |  |
|--|--|----------------|--|
| General Status   |  | Voltage        |  |
| Demand   |  | System Inertia |  |
| System Margins   |  | Weather        |  |
| Generation   |  | Transmission   |  |
| Active Constraints                                       |  |                |  |

|   |                  |        |
|---|------------------|--------|
| <a href="#">Today's Minimum De-Rated Margin</a> | 9,100 MW (SP 45) |        |
| <a href="#">System Warnings</a>                 | None             |        |
| Current BMU Largest Loss Risk                   | Generation       | 1000MW |
|   | Demand           | 560MW  |

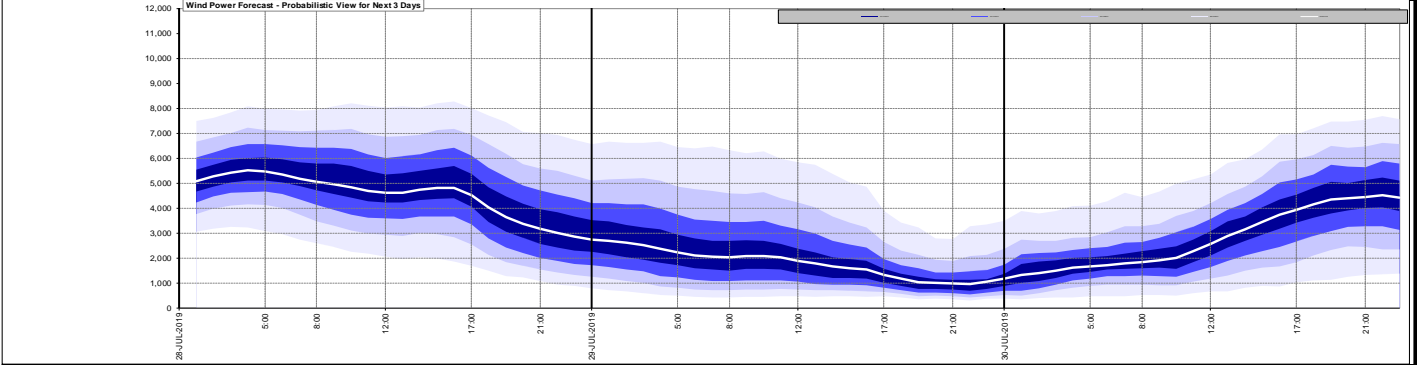
**Balancing Costs**



| Yesterday's Market Summary            |                      |
|---------------------------------------|----------------------|
| <a href="#">Cash out price (Max)</a>  | £60.00/MWh (SP44)    |
| <a href="#">Cash Out Price (Min)</a>  | £10.50/MWh (SP11-14) |
| <a href="#">Peak Demand Yesterday</a> | 29,277 MW            |

| Interconnectors<br>Net Transfer Capacity (MWs) |        |        |                      |
|--|--------|--------|----------------------|
| Today  | Import | Export |                      |
| Netherlands (BritNed)                          | 1000   | 1030   | Fully available      |
| France (IFA)                                   | 2000   | 2000   | Fully Available      |
| Belgium (Nemo)                                 | 1013   | 1013   | Fully Available      |
| Ireland (EWIC)                                 | 500    | 530    | Fully Available      |
| Northern Ireland (MOYLE)                       | 395    | 500    | Partially available. |

### Wind Power Forecast



Key:

- 20% confidence
- 40% confidence
- 60% confidence
- 80% confidence
- Mean Forecast

### Expected embedded generation (MWs)

#### Embedded Generation Forecast

|                   | 27-JUL-2019 |             |             |             |             | 28-JUL-2019 |             |             |             |             | 29-JUL-2019 |            |            |             |             |             |            |
|-------------------|-------------|-------------|-------------|-------------|-------------|-------------|-------------|-------------|-------------|-------------|-------------|------------|------------|-------------|-------------|-------------|------------|
|                   | 05:00       | 08:00       | 12:00       | 17:00       | 21:00       | 00:00       | 05:00       | 08:00       | 12:00       | 17:00       | 21:00       | 00:00      | 05:00      | 08:00       | 12:00       | 17:00       | 21:00      |
| Solar (MW)        | 0           | 533         | 3000        | 2130        | 28          | 2           | 0           | 950         | 3559        | 2601        | 19          | 0          | 0          | 1579        | 5927        | 3720        | 22         |
| Wind (MW)         | 537         | 615         | 914         | 1140        | 1051        | 1098        | 1159        | 1205        | 1373        | 1358        | 939         | 805        | 642        | 611         | 673         | 575         | 434        |
| STOR (MW)         | 0           | 0           | 0           | 0           | 0           | 0           | 0           | 0           | 0           | 0           | 0           | 0          | 0          | 0           | 0           | 0           | 0          |
| <b>Total (MW)</b> | <b>537</b>  | <b>1148</b> | <b>3914</b> | <b>3270</b> | <b>1079</b> | <b>1100</b> | <b>1159</b> | <b>2155</b> | <b>4932</b> | <b>3959</b> | <b>958</b>  | <b>805</b> | <b>642</b> | <b>2190</b> | <b>6600</b> | <b>4295</b> | <b>456</b> |

