

**National Electricity
Transmission System Status Report**

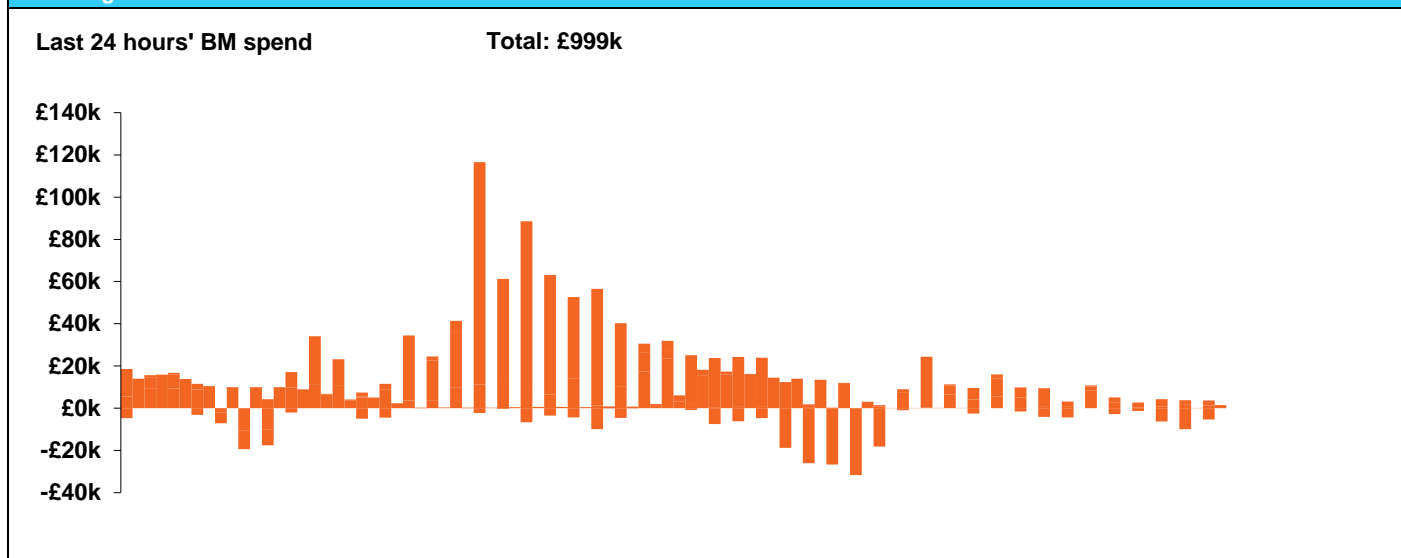


National Electricity Transmission System Status Report
Saturday 27 July 2019

Today's High Level Risk Status Forecast for the next 24h			
General Status		Voltage	
Demand		System Inertia	
System Margins		Weather	
Generation		Transmission	
Active Constraints			

Today's Minimum De-Rated Margin	8,700 MW (SP 21)	
System Warnings	None	
Current BMU Largest Loss Risk	Generation	1000MW
	Demand	560MW

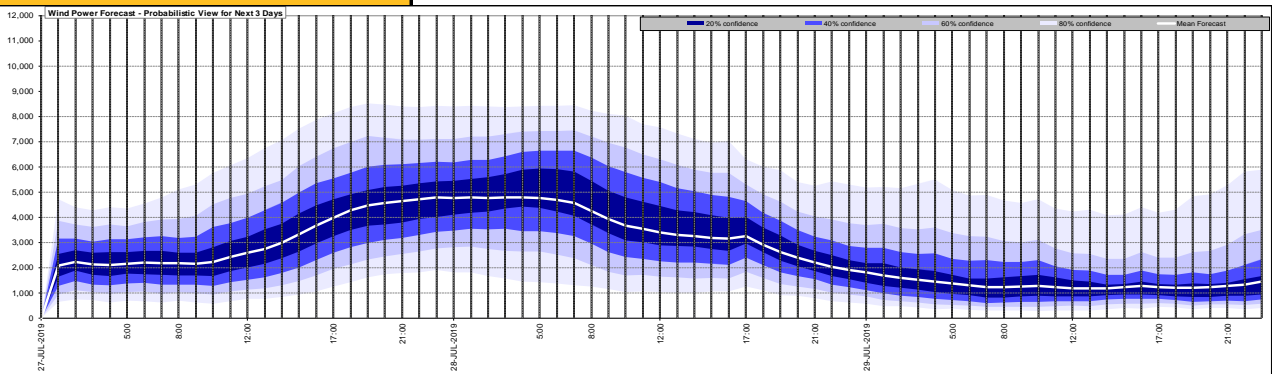
Balancing Costs



Yesterday's Market Summary	
Cash out price (Max)	£100.00/MWh (SP18)
Cash Out Price (Min)	£10.50/MWh (SP5-7)
Peak Demand Yesterday	33,219 MW

Interconnectors Net Transfer Capacity (MWs)			
Today	Import	Export	
Netherlands (BritNed)	1000	1030	Fully available
France (IFA)	2000	2000	Fully Available
Belgium (Nemo)	1013	1013	Fully Available
Ireland (EWIC)	500	530	Fully Available
Northern Ireland (MOYLE)	395	500	Partially available.

Wind Power Forecast



Key:

- 20% confidence
- 40% confidence
- 60% confidence
- 80% confidence
- Mean Forecast

Expected embedded generation (MWs)

Embedded Generation Forecast

	26-JUL-2019					27-JUL-2019					28-JUL-2019						
	05:00	08:00	12:00	17:00	21:00	00:00	05:00	08:00	12:00	17:00	21:00	00:00	05:00	08:00	12:00	17:00	21:00
Solar (MW)	0	1110	4160	2620	21	0	0	630	2749	2159	19	0	0	1157	3649	2651	33
Wind (MW)	1003	997	1200	1122	654	578	529	624	907	1216	1080	1087	1124	1136	1148	1114	752
STOR (MW)	0	0	0	0	0	0	0	0	0	0	0	0	0	0	0	0	0
Total (MW)	1003	2107	5360	3742	675	578	529	1254	3656	3375	1099	1087	1124	2293	4797	3765	785

