

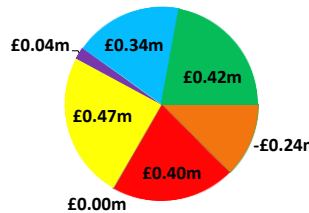
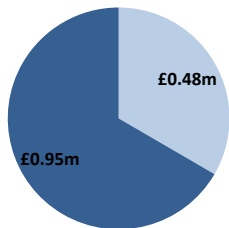
Date: **Thursday 18 Jul 2019**

**BSUoS Charge Estimate: £1.49/MWh**  
**Total Outturn: £1.43m**

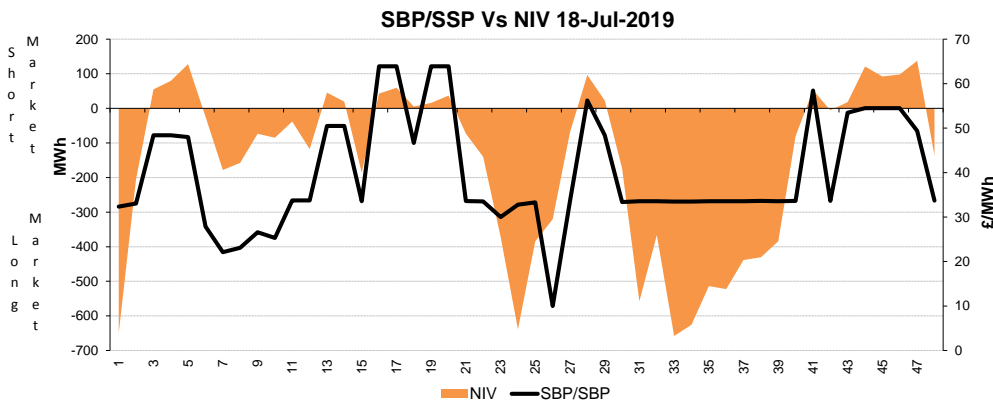
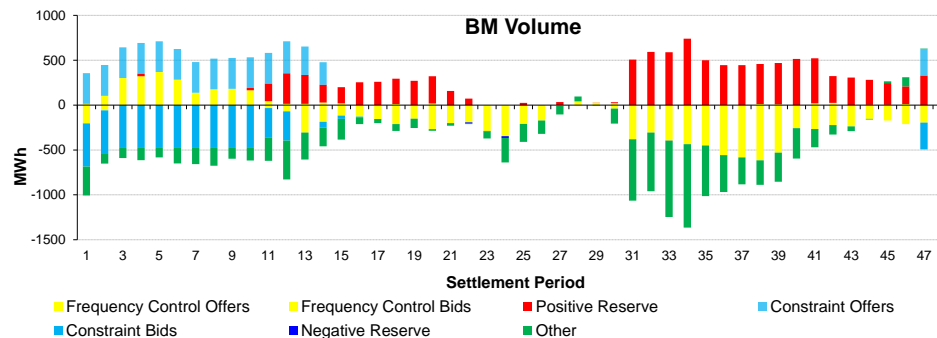
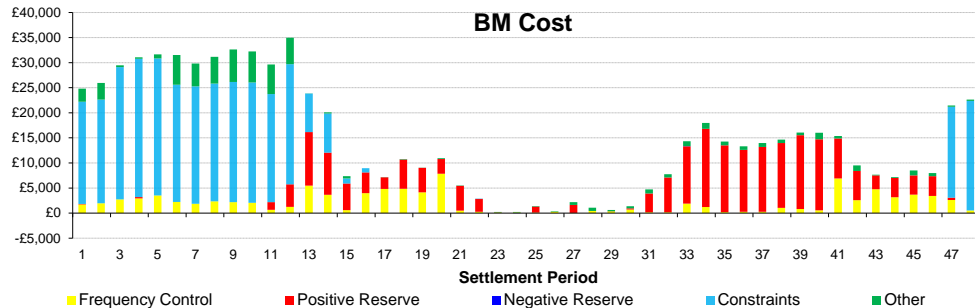
# Daily Balancing Costs

BM Cost (Indicative)

AS Cost (Estimate)



- Energy Imbalance
- Positive Reserve (Op Res + STOR)
- Negative Reserve (Footroom)
- Frequency Control (Response + Fast Reserve)
- Other Reserve (Ancillary Costs Only)
- Constraints (BM & Trades only)
- Other (Reactive + Black Start + BM & AS General)



**Western Link status: Available**

## Commentary

The market was long throughout the 24 hours. Interconnectors were traded for positive margin between the afternoon and the evening. Spin Gen was deployed in the morning for demand uncertainty. Overnight, voltage level was managed with a mix of BM actions and trades on generating units, and RoCoF was secured with multiple trades on the interconnectors.