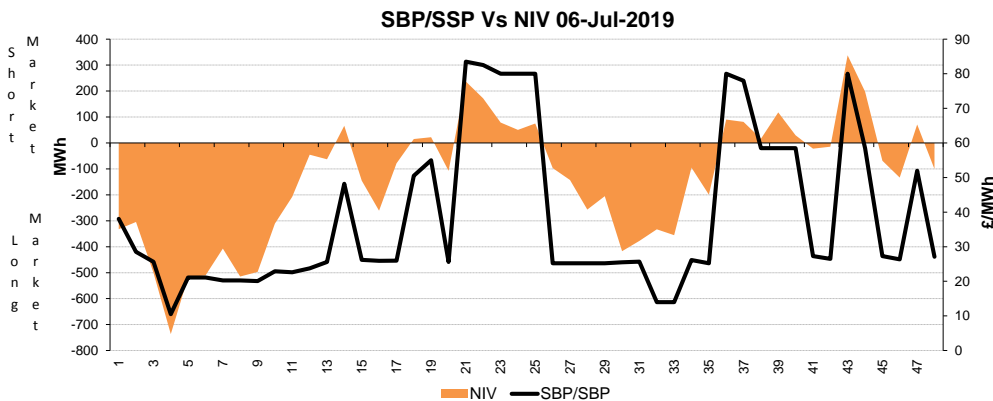
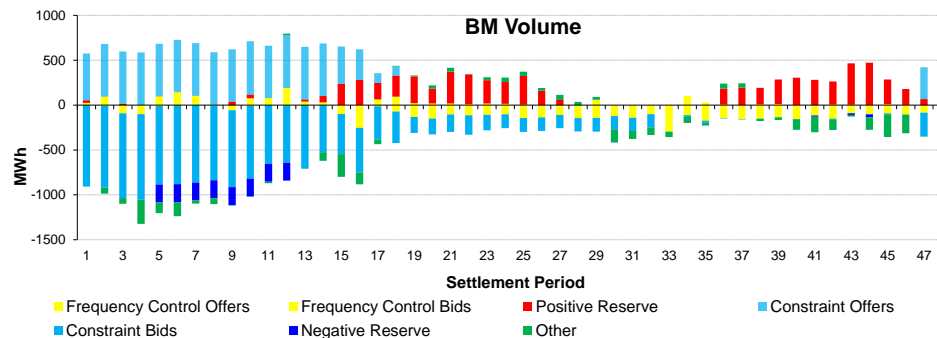
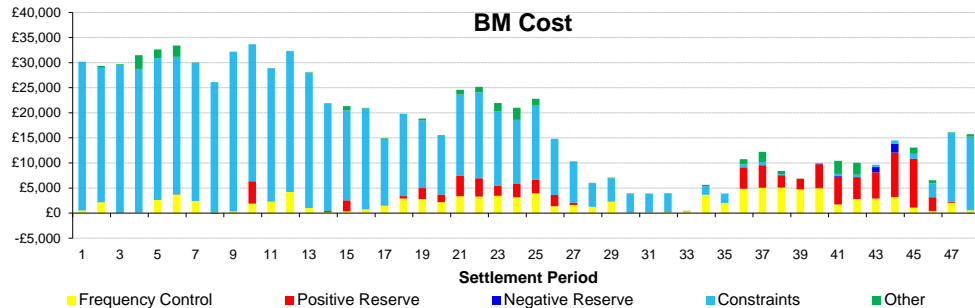
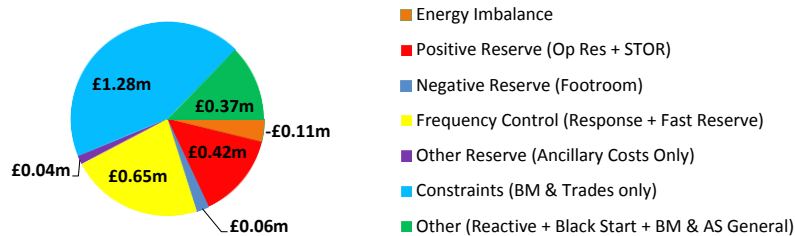
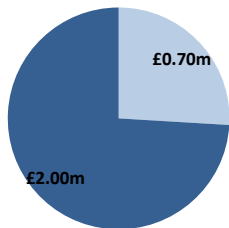


Date: **Tuesday 09 Jul 2019**

BSUoS Charge Estimate: £2.73/MWh
Total Outturn: £2.70m

Daily Balancing Costs

- BM Cost (Indicative)
- AS Cost (Estimate)



Commentary

The market was prevalently long throughout the 24 hours. Spin Gen was deployed in the morning for demand uncertainty. BM actions were taken between the morning and the afternoon to solve power flow constraints in the South-East area of England. Overnight, voltage levels were regulated with offers accepted in the BM. RoCoF was secured with multiple trades on the interconnectors.

Western Link status: Available