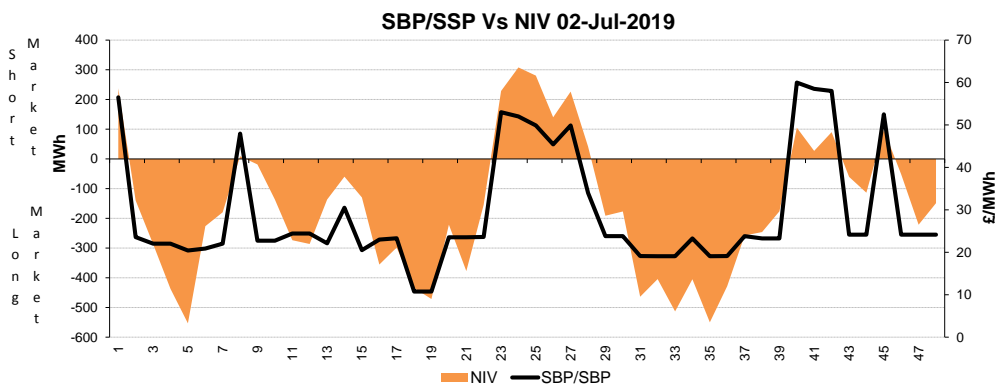
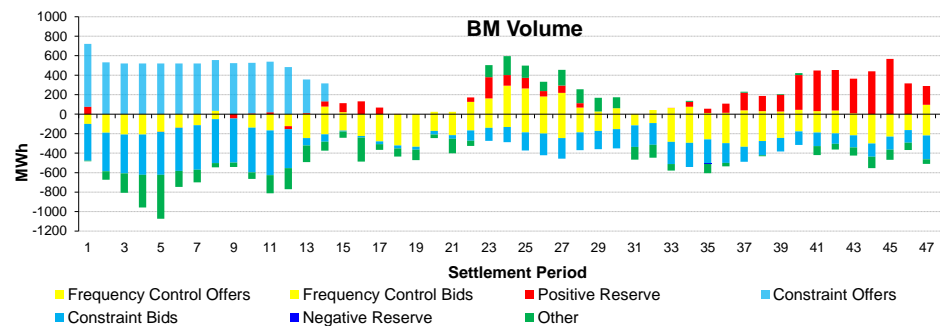
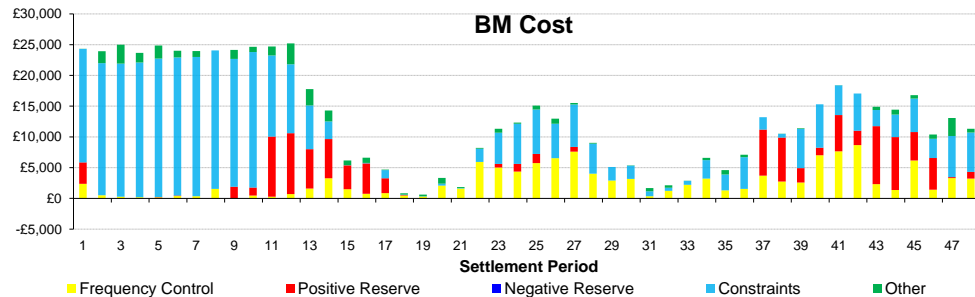
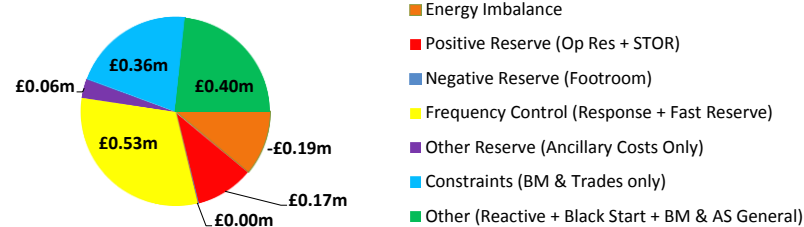
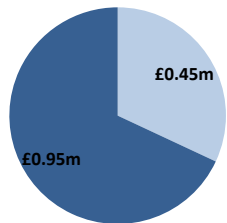


Date: Tuesday 02 Jul 2019

BSUoS Charge Estimate: £1.47/MWh  
Total Outturn: £1.40m

# Daily Balancing Costs

BM Cost (Indicative)  
AS Cost (Estimate)



**Western Link status: Available**

## Commentary

A generally quiet day with low wind and high high solar energy saw a generally long market, with NIV flipping around lunch time due to generation losses and STOR was used in merit to resolve the imbalance.

Voltage Control issues on the East Coast and North England resolved through BM actions and trades. System inertia mitigated via interconnector trades and BM actions. Constraints in South Wales and South West England remediated using BM Actions