

**GB Electricity  
System Operator Daily Report**

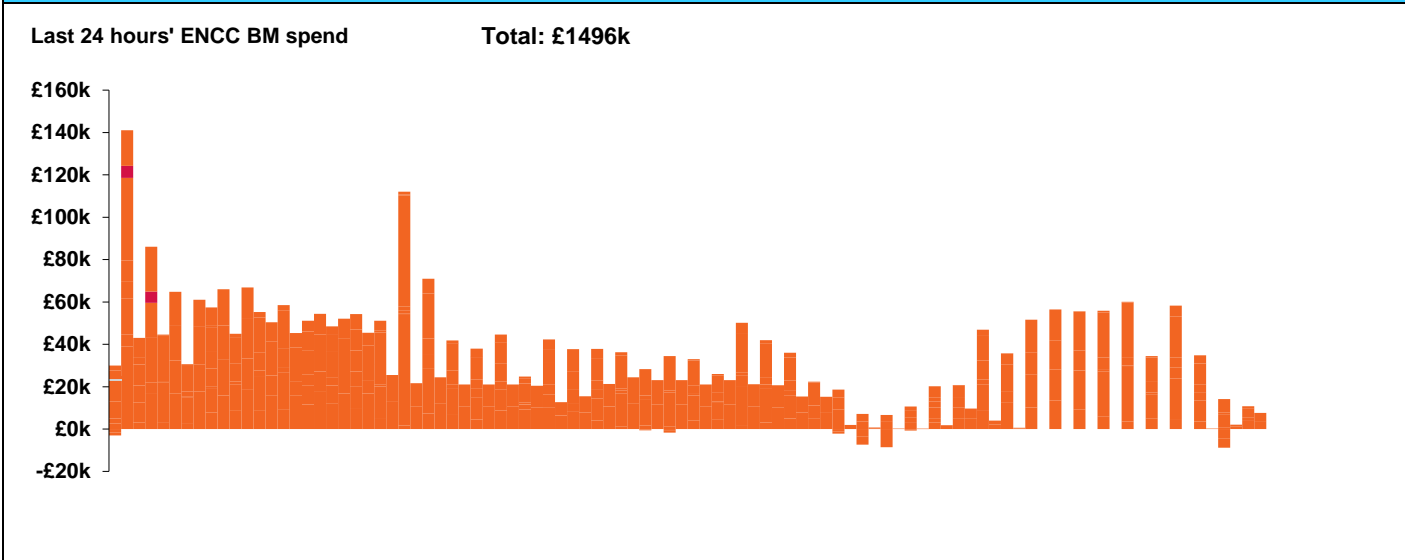


**GB Electricity System Operator Daily Report**  
Friday 14 June 2019

Today's High Level Risk Status Forecast for the next 24h			
General Status		Voltage	
Demand		System Inertia	
System Margins		Weather	
Generation		Transmission	
Active Constraints			

<a href="#">Today's Minimum De-Rated Margin</a>	3891.13 (SP 36)	
<a href="#">System Warnings</a>	None	
Current BMU Largest Loss Risk	Generation	Variable
	Demand	560MW

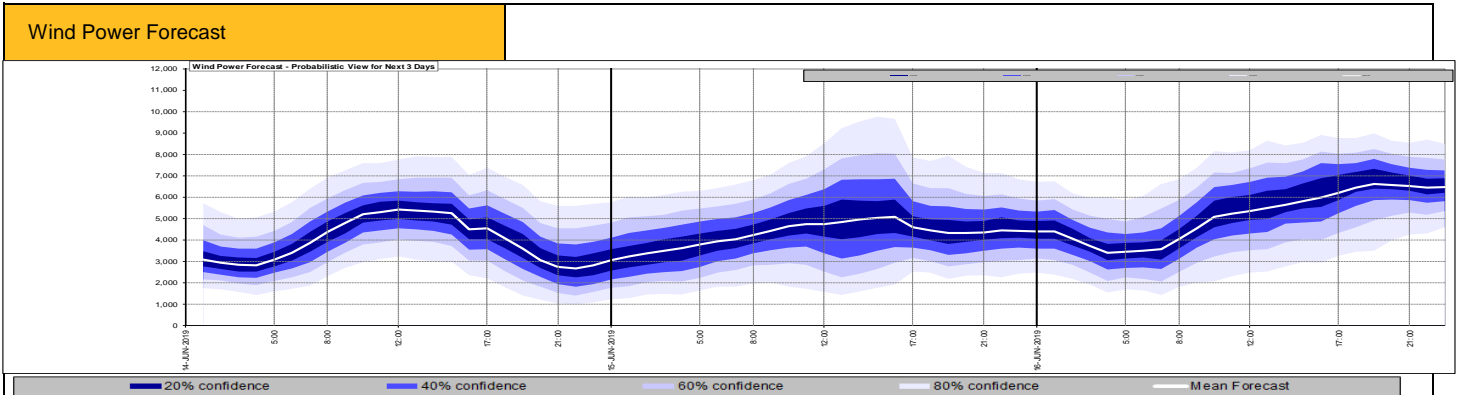
**Balancing Costs**



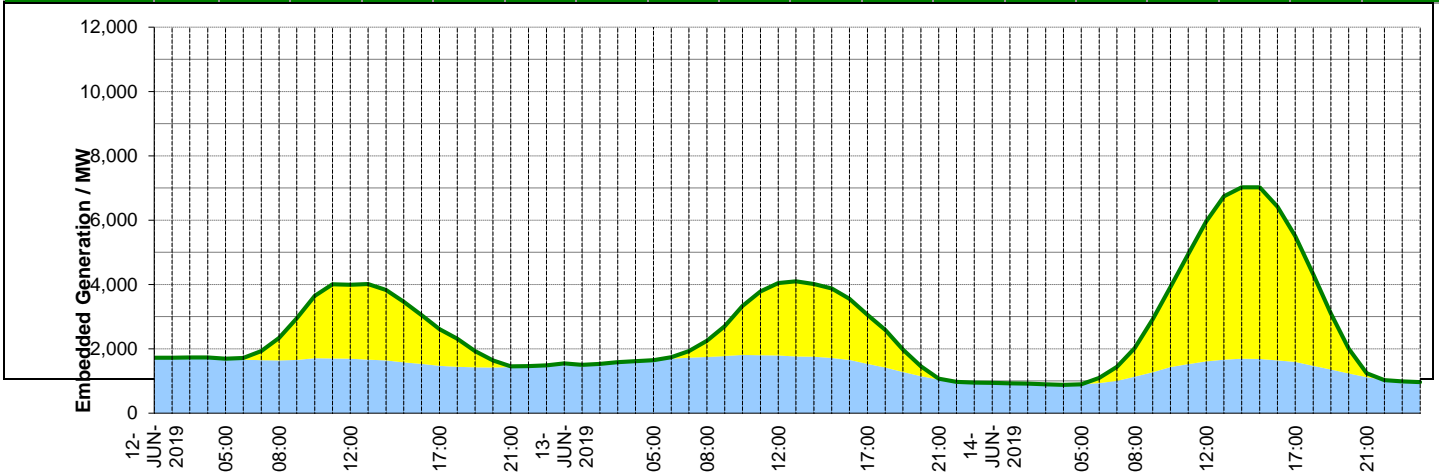
**Yesterday's Market Summary**

<a href="#">Cash out price (Max)</a>	£87.50 /MWh (SP 43)
<a href="#">Cash Out Price (Min)</a>	£26.40 /MWh (SP 31)
<a href="#">Peak Demand Yesterday</a>	34,970 MW

Interconnectors			
Today	Import	Export	
Netherlands (BritNed)	1060	1060	Fully Available
France (IFA)	2000	2000	Fully Available
Belgium (Nemo)	1013	1013	Fully Available
Ireland (EWIC)	500	530	Fully Available
Northern Ireland (MOYLE)	0	0	Outage



Expected embedded generation (MWs)																	
Embedded Generation Forecast																	
	13-JUN-2019					14-JUN-2019					15-JUN-2019						
	05:00	08:00	12:00	17:00	21:00	00:00	05:00	08:00	12:00	17:00	21:00	00:00	05:00	08:00	12:00	17:00	21:00
Solar (MW)	1	960	2560	1990	49	0	1	710	4250	3721	126	0	11	2162	4793	2754	94
Wind (MW)	1542	1634	1531	1205	849	861	880	1133	1404	1398	978	1013	1127	1236	1622	1508	1116
STOR (MW)	0	0	0	0	0	0	0	0	0	0	0	0	0	0	0	0	0
Total (MW)	1543	2594	4091	3195	898	861	881	1843	5654	5119	1104	1013	1138	3398	6415	4262	1210



Weather	Source	Commentary
11/05/2019 (Summary)	<a href="#">Met Office</a> <a href="#">SEPA</a> <a href="#">Natural Resources Wales</a>	<p>Today:</p> <p>The rain across England, Wales and northwest Scotland will soon fragment. Most areas will then see sunny spells and some heavy showers. It will feel a little warmer in any sunshine than of late, but it will be breezy.</p> <p>Tonight:</p> <p>The daytime showers will ease this evening. However, a new area of showery rain will develop in the west and southwest, where it will become windy.</p>
General Weather Concerns e.g. wind, rain, snow, flooding, GB Weather Warnings	<a href="#">Met Office Weather</a> <a href="#">SEPA</a> <a href="#">Natural Resources Wales</a>	<p>None</p> <p>Flood warnings Flooding is expected - immediate action required</p> <p>Areas near the East and West Fen Catchwater and the Maud Foster Drain Great Steeping and Firsby Isolated properties and villages near the Great Eau, Long Eau and Woldgrift Drain Poulton Drain in the Covenham St Marys Area River Anker at Mancetter, Witherley and Atherstone River Bain and Haltham Beck in Haltham and Kirkby on Bain River Blythe at Blyth End River Penk at Acton Bridge River Penk at Penkridge River Sence from Temple Mill to Sheepy Magna River Severn at Court Meadow, Kempsey and Callow End River Severn at Severn Ham, Tewkesbury River Severn at the Showground and The Quarry, Shrewsbury River Steeping in Wainfleet All Saints River Vyrnwy at Maesbrook River Vyrnwy at Melverley River Weaver at Shrewbridge Lodge River Wreake at Frisby-on-the-Wreake River Wreake for mills at Hoby, Thrussington and Ratcliffe Whinney Brook and Dovers Brook at Maghull, around Hall Lane, Damfield Lane and Foxhouse Lane</p>

*Contains public sector information licensed under the Open Government Licence v1.0*

Further Information	
BM Reports	<a href="https://www.bmreports.com">https://www.bmreports.com</a>
System Balancing Reports	<a href="https://www.nationalgrideso.com/balancing-data/system-balancing-reports">https://www.nationalgrideso.com/balancing-data/system-balancing-reports</a>
Forecast Volumes and Costs	<a href="https://www.nationalgrideso.com/balancing-data/forecast-volumes-and-costs">https://www.nationalgrideso.com/balancing-data/forecast-volumes-and-costs</a>
NGESO Insights	<a href="https://www.nationalgrideso.com/insights">https://www.nationalgrideso.com/insights</a>