



Department
of Energy &
Climate Change

Smart Energy Code (SEC)



The Smart Energy Code (SEC) defines the rights and obligations of the DCC, energy suppliers, network operators and other relevant parties involved in the end to end management of smart metering in Great Britain.

The SEC comes into force under the Data and Communications Company (DCC) Licence and was designated by the Secretary of State on 23 September 2013. The Secretary of State has been adding additional content over time to support development of smart metering.

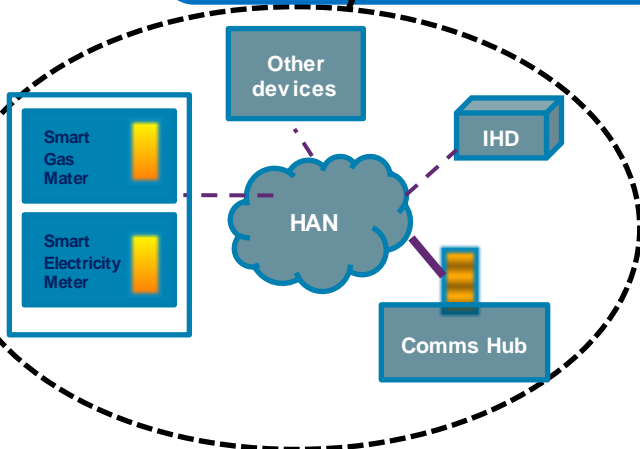
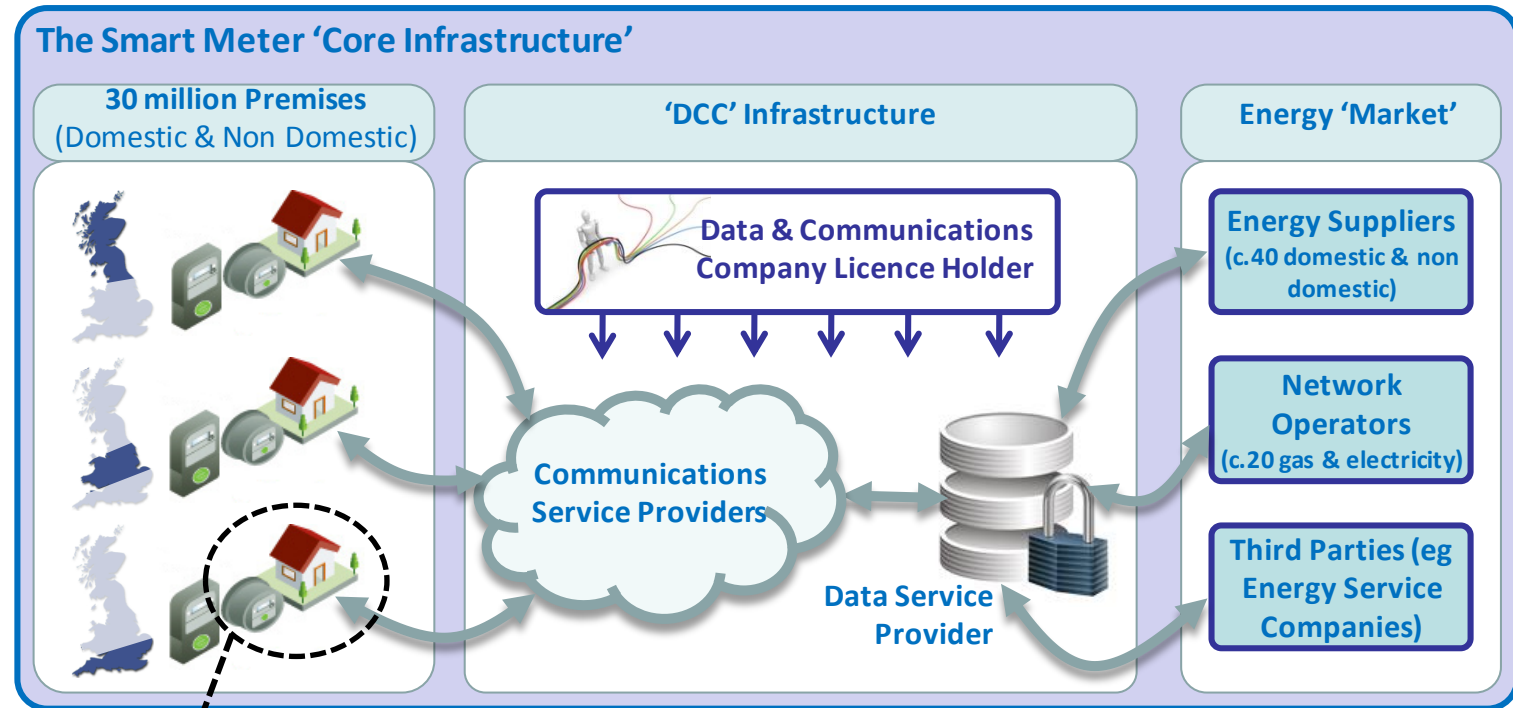
The DCC, energy suppliers and network operators are required by licence to become a party to the SEC and comply with its provisions. Other bodies that wish to use the DCC's services must also accede to the SEC to do so.

The SEC is self-governed and is managed by the SEC Panel with oversight where appropriate from Ofgem. However, the Secretary of State (DECC) is doing the initial drafting.

The SEC modification process is being transferred to industry, the SEC Panel and Ofgem. The industry-led modification process will be substantially activated from February, with the Secretary of State temporarily making decisions on proposals (to transfer to Ofgem at later date).



What does the SEC do?



- Sets the technical specifications and performance levels
- How to become a User
- Installing the SMETS2 Smart Metering system
- How the DCC and Users communicate with the system
- IT systems and interfaces required – inc detail of how these work
- Security obligations – inc key infrastructure
- Governance



What does the SEC look like?

[Section A: Definitions](#)

[Section B: Accession](#)

[Section C: Governance](#)

[Section D: Modification Process](#)

[Section E: Registration Data](#)

[Section F: Smart Metering System Requirements](#)

[Section G: Security](#)

[Section H: DCC Services](#)

[Section I: Data Privacy](#)

[Section J: Charges](#)

[Section K: Charging Methodology](#)

[Section L: SMKI and DCCKI](#)

[Section M: General](#)

[Section N: SMETS1 Meters](#)

[Section T: Testing during Transition](#)

[Section X: Transition](#)

[Appendices](#)

[Subsidiary documents](#)

[Technical Specifications](#)

The SEC will be extended to include Alt-HAN, SMETS1 enrolment and adoption, and Central Registration Service.



Department
of Energy &
Climate Change

Any Questions?