

**GB Electricity  
System Operator Daily Report**

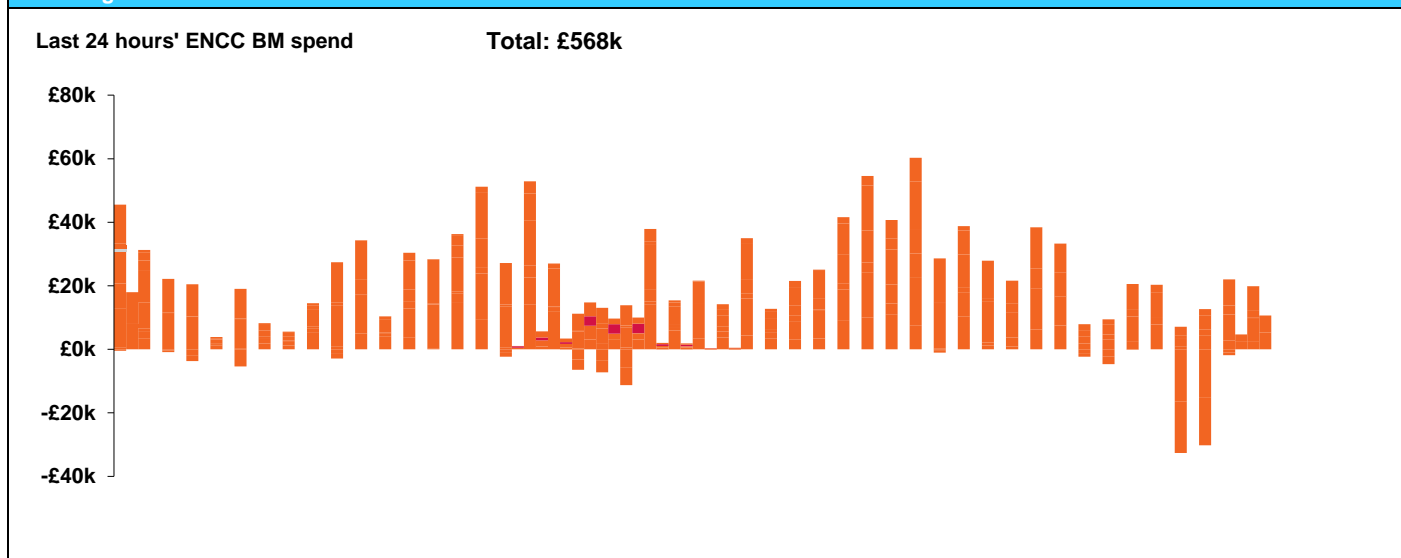


**GB Electricity System Operator Daily Report**  
Tuesday 21 May 2019

Today's High Level Risk Status Forecast for the next 24h			
General Status		Voltage	
Demand		System Inertia	
System Margins		Weather	
Generation		Transmission	
Active Constraints			

<a href="#">Today's Minimum De-Rated Margin</a>	2195 (SP38)	
<a href="#">System Warnings</a>	None	
Current BMU Largest Loss Risk	Generation	1260MW
	Demand	560MW

**Balancing Costs**

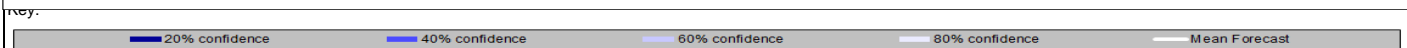
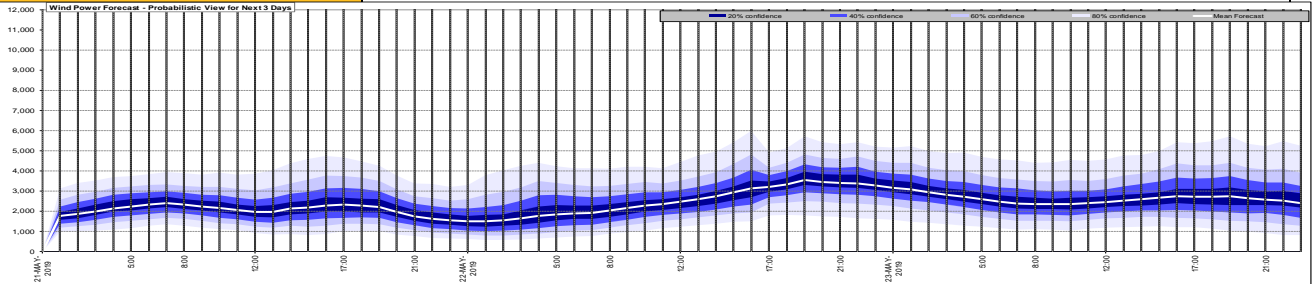


Yesterday's Market Summary	
<a href="#">Cash out price (Max)</a>	£84.50.00 / MWh (SP36,39)
<a href="#">Cash Out Price (Min)</a>	£29.60 / MWh (SP45)
<a href="#">Peak Demand Yesterday</a>	33,881 MW

Interconnectors

Today	Import	Export	
Netherlands (BritNed)	1060	1060	Fully Available
France (IFA)	2000	2000	Fully Available
Belgium (Nemo)	1013	1013	Fully Available
Ireland (EWIC)	500	530	Fully Available
Northern Ireland (MOYLE)	395	500	Partially available.

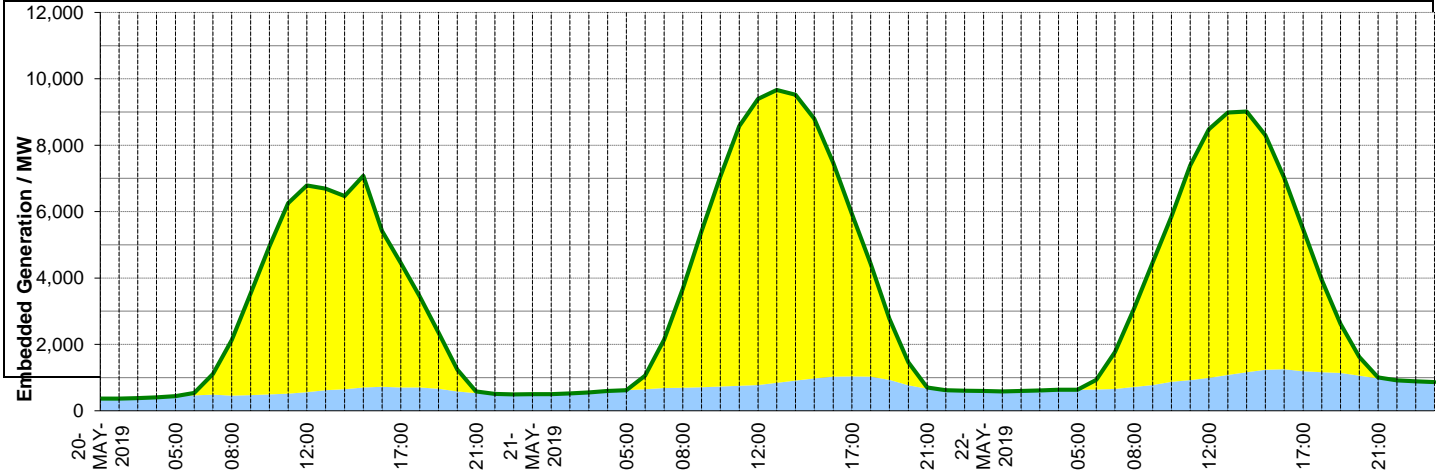
Wind Power Forecast



Expected embedded generation (MWs)

Embedded Generation Forecast

	20-MAY-2019					21-MAY-2019					22-MAY-2019						
	05:00	08:00	12:00	17:00	21:00	00:00	05:00	08:00	12:00	17:00	21:00	00:00	05:00	08:00	12:00	17:00	21:00
Solar (MW)	0	1670	6230	3750	53	0	0	2987	8616	4892	40	0	0	2339	7493	4287	32
Wind (MW)	438	453	557	699	529	498	621	694	778	1036	663	596	635	713	987	1190	976
STOR (MW)	0	0	0	0	0	0	0	0	0	0	0	0	0	0	0	0	0
<b>Total (MW)</b>	<b>438</b>	<b>2123</b>	<b>6787</b>	<b>4449</b>	<b>582</b>	<b>498</b>	<b>621</b>	<b>3681</b>	<b>9394</b>	<b>5928</b>	<b>703</b>	<b>596</b>	<b>635</b>	<b>3052</b>	<b>8480</b>	<b>5477</b>	<b>1008</b>



Weather	Source	Commentary
11/05/2019 (Summary)	<a href="#">Met Office</a> <a href="#">SEPA</a> <a href="#">Natural Resources Wales</a>	<p><b>Today:</b> Low cloud and fog along North Sea coasts mostly clearing. Warm sunny spells for much of England, Wales, and Northern Ireland, with isolated showers. Heavier, potentially thundery, showers for central and southern Scotland and more persistent rain across northeast Scotland.</p> <p><b>Tonight:</b> A dry and chilly night for much of the country with some long clear spells, leading to isolated fog patches by dawn. Cloudy across northern Scotland with patchy rain</p>
General Weather Concerns e.g. wind, rain, snow, flooding, GB Weather Warnings	<a href="#">Met Office Weather</a> <a href="#">SEPA</a> <a href="#">Natural Resources Wales</a>	<p><b>Weather Warnings:</b> No weather warnings are in force for the UK.</p> <p><b>Flood Warnings:</b> No flood warnings are currently in force.</p>

*Contains public sector information licensed under the Open Government Licence v1.0*

Further Information	
BM Reports	<a href="https://www.bmreports.com">https://www.bmreports.com</a>
System Balancing Reports	<a href="https://www.nationalgrideso.com/balancing-data/system-balancing-reports">https://www.nationalgrideso.com/balancing-data/system-balancing-reports</a>
Forecast Volumes and Costs	<a href="https://www.nationalgrideso.com/balancing-data/forecast-volumes-and-costs">https://www.nationalgrideso.com/balancing-data/forecast-volumes-and-costs</a>
NGESO Insights	<a href="https://www.nationalgrideso.com/insights">https://www.nationalgrideso.com/insights</a>