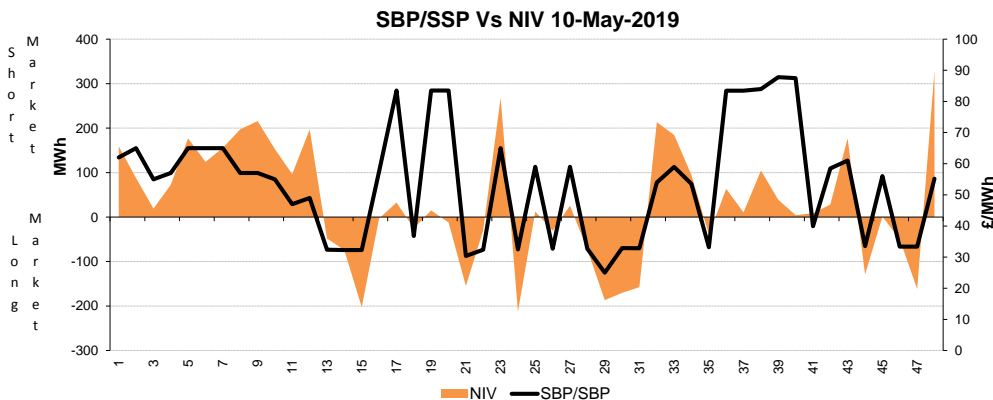
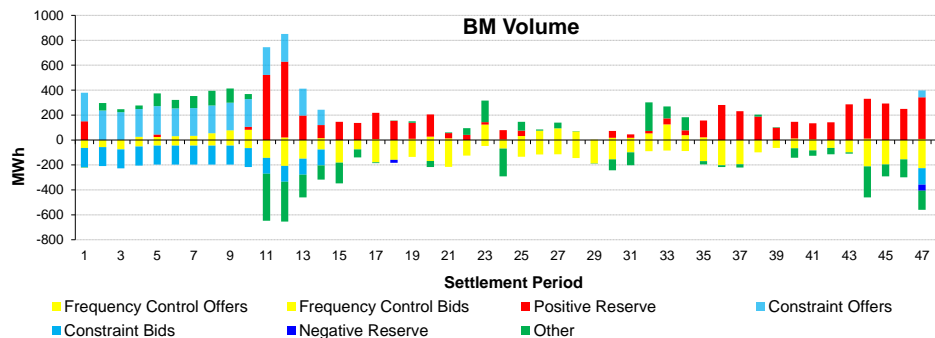
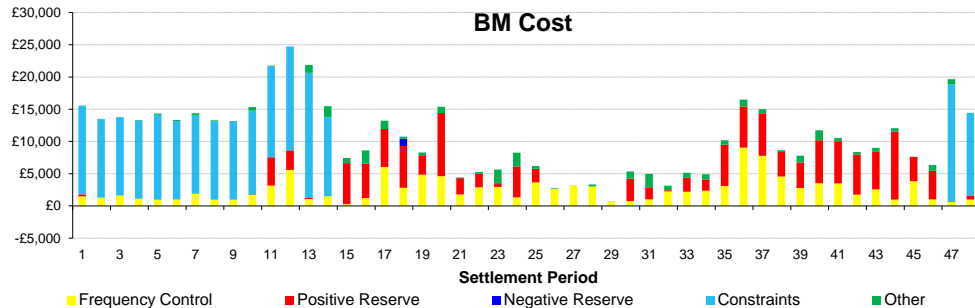
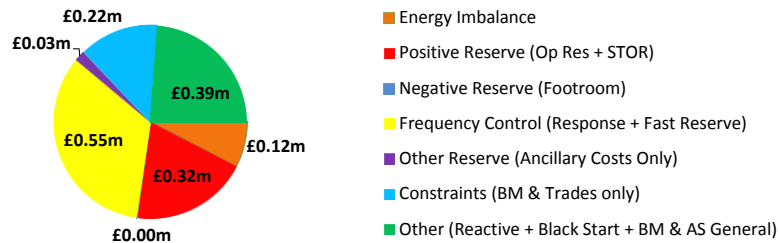
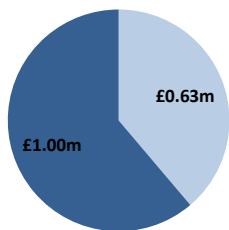


Date: Friday 10 May 2019

BSUoS Charge Estimate: £1.45/MWh
Total Outturn: £1.63m

Daily Balancing Costs

BM Cost (Indicative)
AS Cost (Estimate)



Commentary

The market was short overnight and between the afternoon and the evening pick-up in excess of 400MW. Interconnectors were traded for positive margin over the morning pick. Overnight, BM actions were taken to manage the voltage levels in England and interconnectors were traded to secure RoCoF.

Western Link status: Unavailable