

**GB Electricity  
System Operator Daily Report**

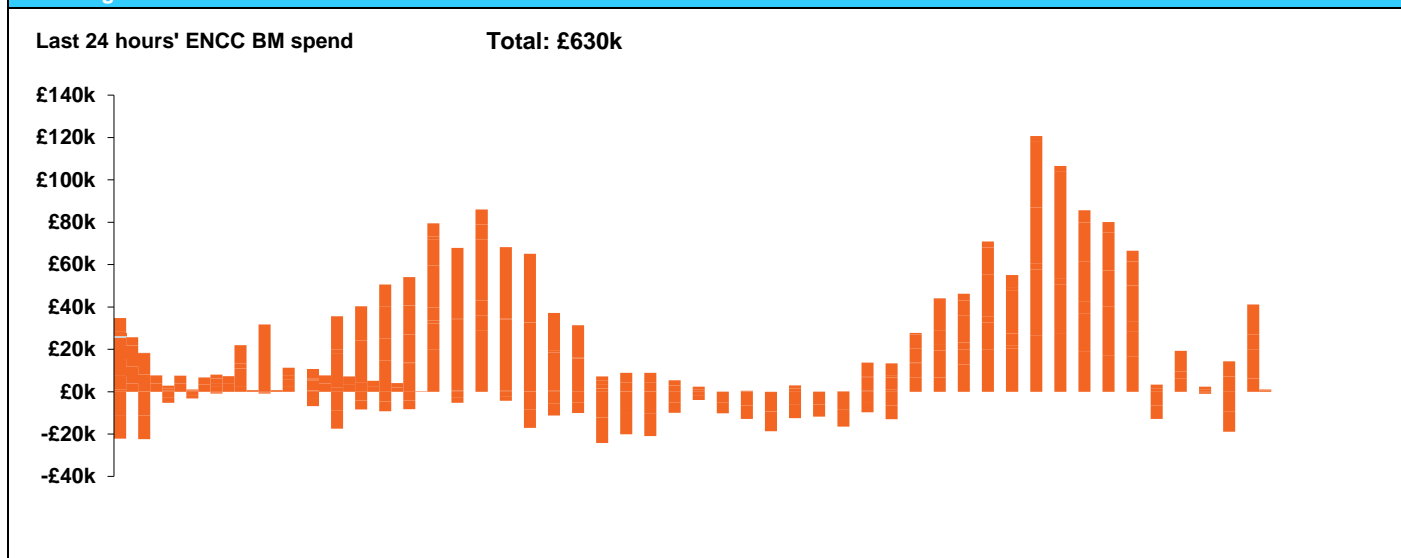


**GB Electricity System Operator Daily Report**  
Wednesday 08 May 2019

Today's High Level Risk Status Forecast for the next 24h			
General Status		Voltage	
Demand		System Inertia	
System Margins		Weather	
Generation		Transmission	
Active Constraints			

<a href="#">Today's Minimum De-Rated Margin</a>	5,289 MW (SP43)	
<a href="#">System Warnings</a>	None	
Current BMU Largest Loss Risk	Generation	1260MW
	Demand	560MW

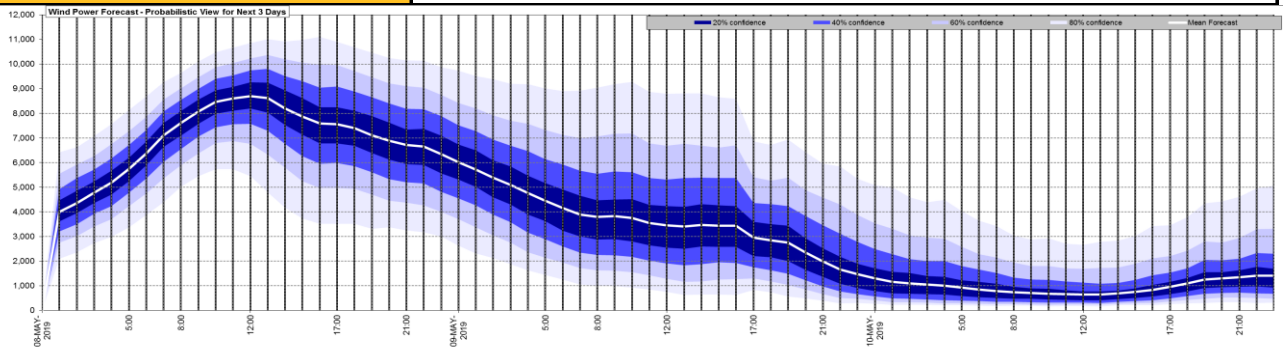
**Balancing Costs**



Yesterday's Market Summary	
<a href="#">Cash out price (Max)</a>	£84.00 MWh (SP 34-37 & 39-40)
<a href="#">Cash Out Price (Min)</a>	£29.10 MWh (SP 1&2)
<a href="#">Peak Demand Yesterday</a>	35,611 MW

Interconnectors			
Today	Import	Export	
Netherlands (BritNed)	1000	1000	Fully available
France (IFA)	1000	1000	Bipolar Outage between 9-1500 hours, 1500 capability otherwise.
Belgium (Nemo)	1013	1013	Fully Available
Ireland (EWIC)	0	0	Planned Outage
Northern Ireland (MOYLE)	395	500	Partially available.

### Wind Power Forecast



Key:

- 20% confidence
- 40% confidence
- 60% confidence
- 80% confidence
- Mean Forecast

### Expected embedded generation (MWs)

#### Embedded Generation Forecast

	07-MAY-2019					08-MAY-2019					09-MAY-2019						
	05:00	08:00	12:00	17:00	21:00	00:00	05:00	08:00	12:00	17:00	21:00	00:00	05:00	08:00	12:00	17:00	21:00
Solar (MW)	0	1630	5380	2650	3	0	0	350	3117	2213	0	0	0	941	4265	3070	0
Wind (MW)	271	290	491	602	847	1079	1430	1738	2191	1999	1628	1530	1377	1353	1455	1134	685
STOR (MW)	0	0	0	0	0	0	0	0	0	0	0	0	0	0	0	0	0
<b>Total (MW)</b>	<b>271</b>	<b>1920</b>	<b>5871</b>	<b>3252</b>	<b>850</b>	<b>1079</b>	<b>1430</b>	<b>2088</b>	<b>5308</b>	<b>4212</b>	<b>1628</b>	<b>1530</b>	<b>1377</b>	<b>2294</b>	<b>5720</b>	<b>4204</b>	<b>685</b>

