

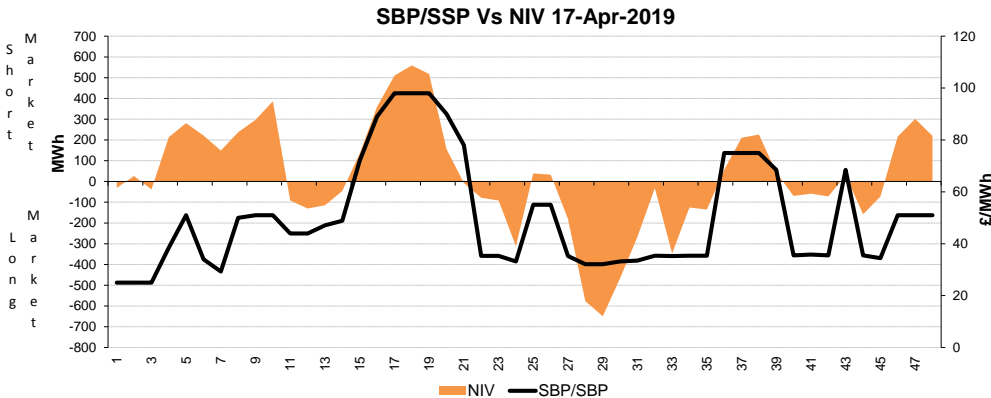
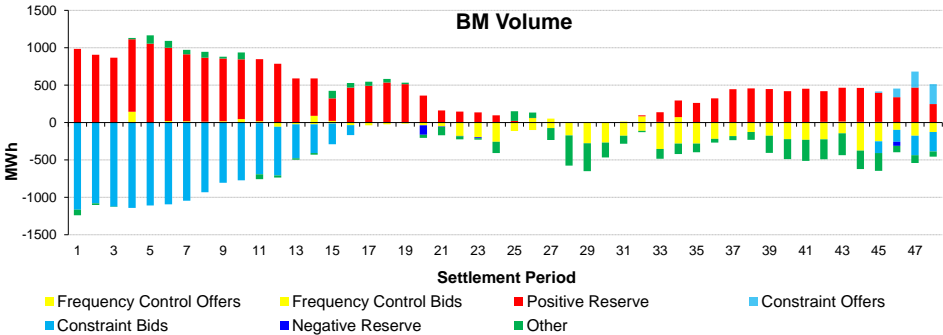
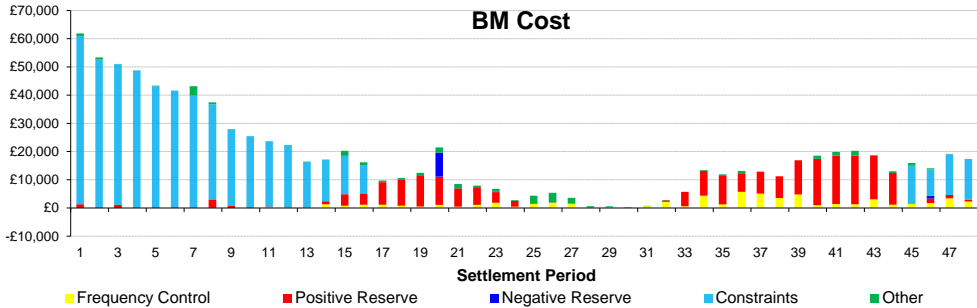
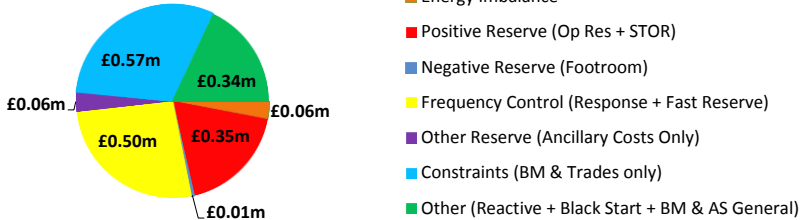
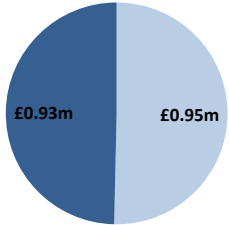
Date: Wednesday 17 Apr 2019

BSUoS Charge Estimate: £1.65/MWh
 Total Outturn: £1.88m

Daily Balancing Costs



BM Cost (Indicative)
 AS Cost (Estimate)



Western Link status: Unavailable

Commentary

The market was short overnight in excess of 600MW, over the morning peak in excess of 1000MW, and in the late evening in excess of 400MW. Over the morning peak, interconnectors were traded for positive margin. 760MW of STOR was run in the morning due to generating plant losses and shortfalls coinciding with a demand forecast error. Overnight, power flow restrictions on the network boundary between England and Scotland were solved with BM action, and voltage levels were regulated in North of England with trades on generating units. Additionally, multiple trades on the interconnectors were taken to secure RoCoF.