

**National Electricity  
Transmission System Status Report**



national**grid**ESO

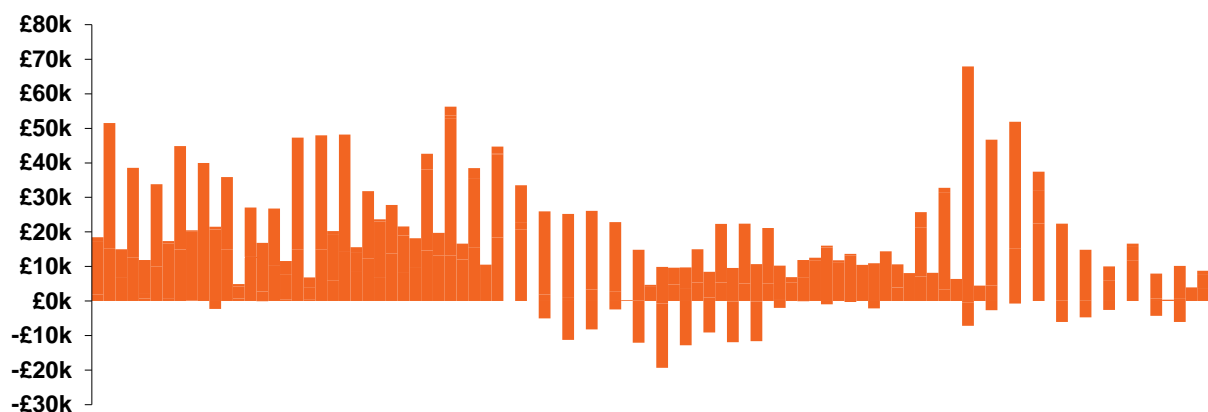
**National Electricity Transmission System Status Report**  
Saturday 06 April 2019

Today's High Level Risk Status Forecast for the next 24h			
General Status	Green	Voltage	Green
Demand	Green	System Inertia	Green
System Margins	Green	Weather	Green
Generation	Green	Transmission	Orange
Active Constraints	Green		

<u>Today's Minimum De-Rated Margin</u>	7273 MW (SP 41)	
<u>System Warnings</u>	None	
Current BMU Largest Loss Risk	Generation	1260MW
	Demand	560MW

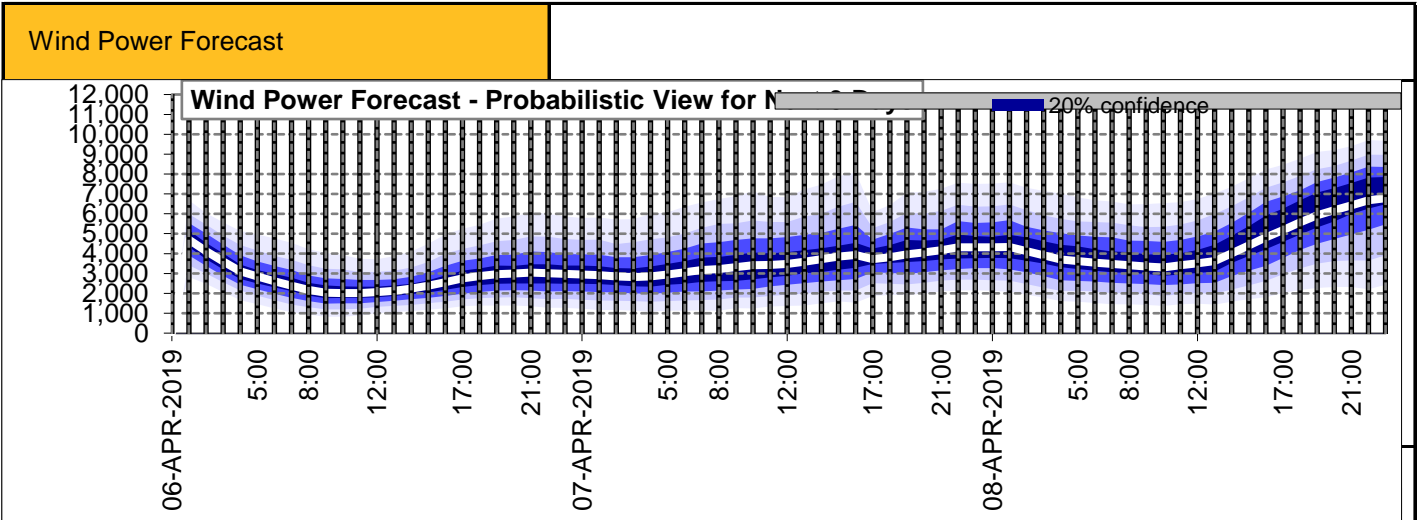
**Balancing Costs**

Last 24 hours' BM spend Total: £1637k



Yesterday's Market Summary	
<u>Cash out price (Max)</u>	£83.50/MWh (SP 38,39,40)
<u>Cash Out Price (Min)</u>	£30.45/MWh (SP 8)
<u>Peak Demand Yesterday</u>	36,710 MW

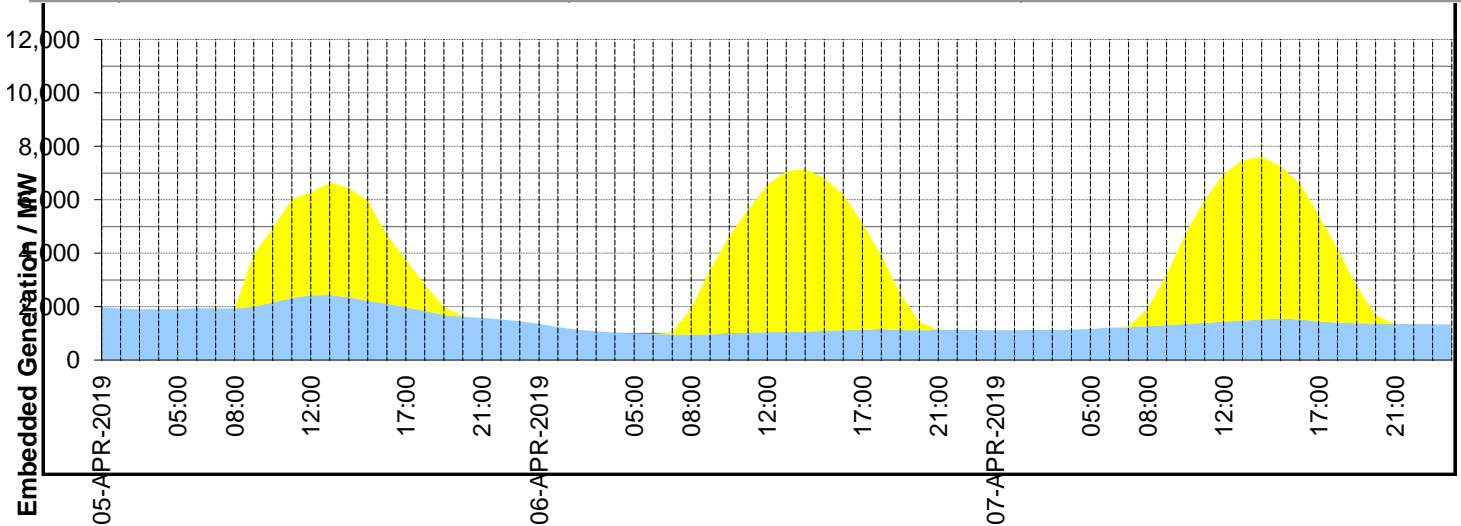
Interconnectors			
Net Transfer Capacity (MWs)			
Today	Import	Export	
Netherlands (BritNed)	1000	1030	Fully available
France (IFA)	1000	1000	Bipole 2 Outage
Belgium (Nemo)	1013	1013	Fully Available
Ireland (EWIC)	500	530	Fully Available
Northern Ireland (MOYLE)	395	500	Partially available.



**Expected embedded generation (MWs)**

Embedded Generation Forecast

	05-APR-2019					06-APR-2019					07-APR-2019						
	05:00	08:00	12:00	17:00	21:00	00:00	05:00	08:00	12:00	17:00	21:00	00:00	05:00	08:00	12:00	17:00	21:00
Solar (MW)	0	0	3850	1780	1	0	0	1001	5522	3997	0	0	0	652	5522	3997	0
Wind (MW)	1910	1931	2419	1973	1583	1354	992	939	1043	1145	1132	1119	1169	1271	1442	1437	1358
STOR (MW)	0	0	0	0	0	0	0	0	0	0	0	0	0	0	0	0	0
<b>Total (MW)</b>	<b>1910</b>	<b>1931</b>	<b>6269</b>	<b>3753</b>	<b>1584</b>	<b>1354</b>	<b>992</b>	<b>1940</b>	<b>6565</b>	<b>5142</b>	<b>1132</b>	<b>1119</b>	<b>1169</b>	<b>1923</b>	<b>6964</b>	<b>5434</b>	<b>1358</b>



Weather	Source	Commentary
Latest forecast (Summary)	<a href="#">Met Office</a> <a href="#">SEPA</a> <a href="#">Natural Resources Wales</a>	<p><b>Today:</b></p> <p>Early low cloud, hill fog and rain in the northeast will become more extensive over Scotland and northeast England. Drier, brighter and warmer elsewhere with the best of the sunshine in the southwest, although an isolated shower is possible</p> <p><b>Tonight:</b></p> <p>Milder for most with low cloud and hill fog spreading to many regions. Mostly dry, but patchy rain or drizzle in the east, a local frost possible in the west</p>
General Weather Concerns e.g. wind, rain, snow, flooding, GB Weather Warnings	<a href="#">Met Office Weather</a> <a href="#">SEPA</a> <a href="#">Natural Resources Wales</a>	<p><b>Weather Warnings:</b></p> <p>There are no Met Office Weather Warnings in force anywhere in the United Kingdom.</p> <p><b>Flood Warnings:</b></p> <p>There are no flood warnings currently in force</p>

*Contains public sector information licensed under the Open Government Licence v1.0*

Further Information	
BM Reports	<a href="https://www.bmreports.com">https://www.bmreports.com</a>
System Balancing Reports	<a href="https://www.nationalgrideso.com/balancing-data/system-balancing-reports">https://www.nationalgrideso.com/balancing-data/system-balancing-reports</a>
Forecast Volumes and Costs	<a href="https://www.nationalgrideso.com/balancing-data/forecast-volumes-and-costs">https://www.nationalgrideso.com/balancing-data/forecast-volumes-and-costs</a>
NGESO Insights	<a href="https://www.nationalgrideso.com/insights">https://www.nationalgrideso.com/insights</a>