

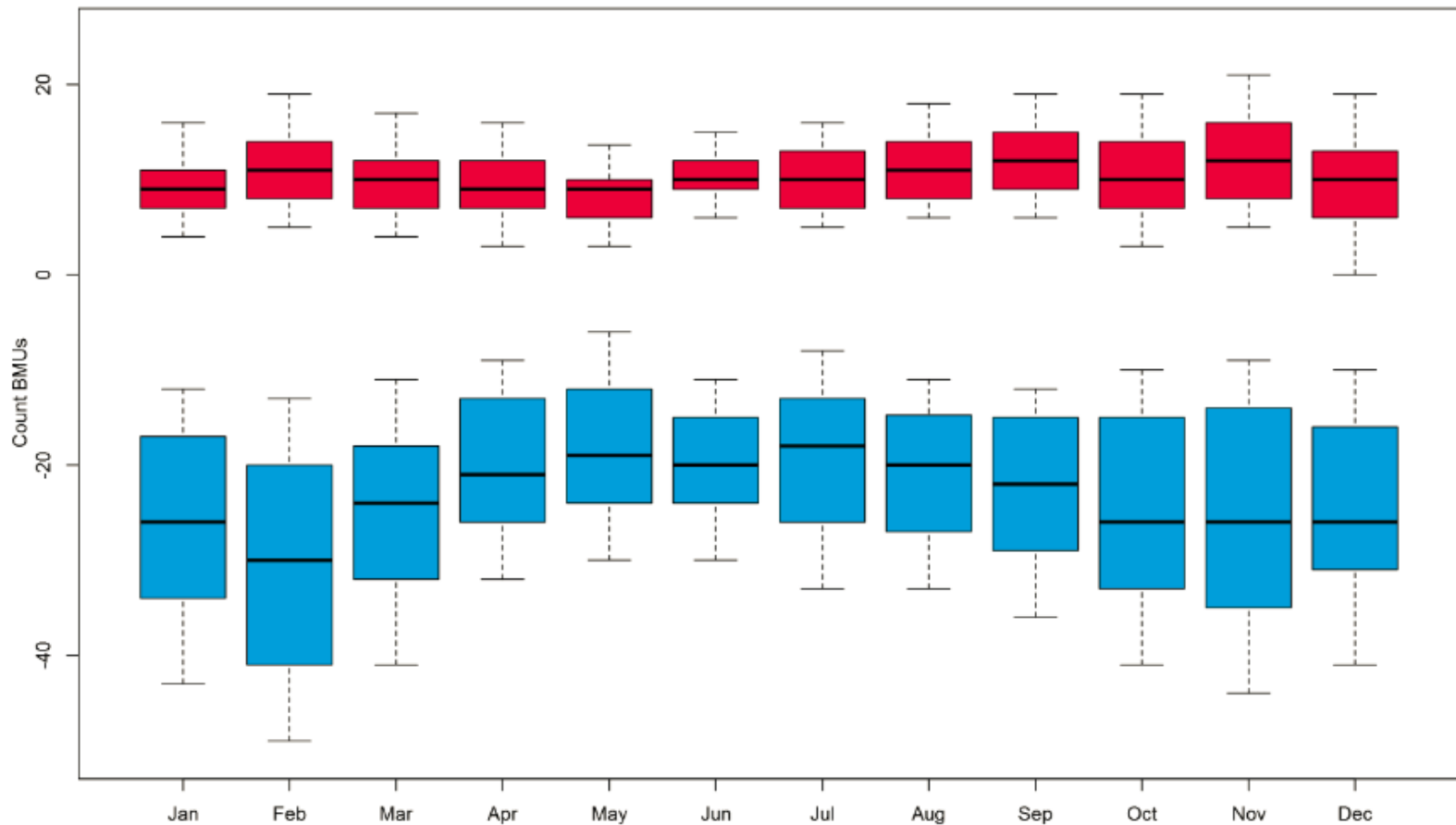
GC0087 Frequency Response Provisions



Meeting 7
15 June 2016

Monthly Distribution of BMUs with headroom

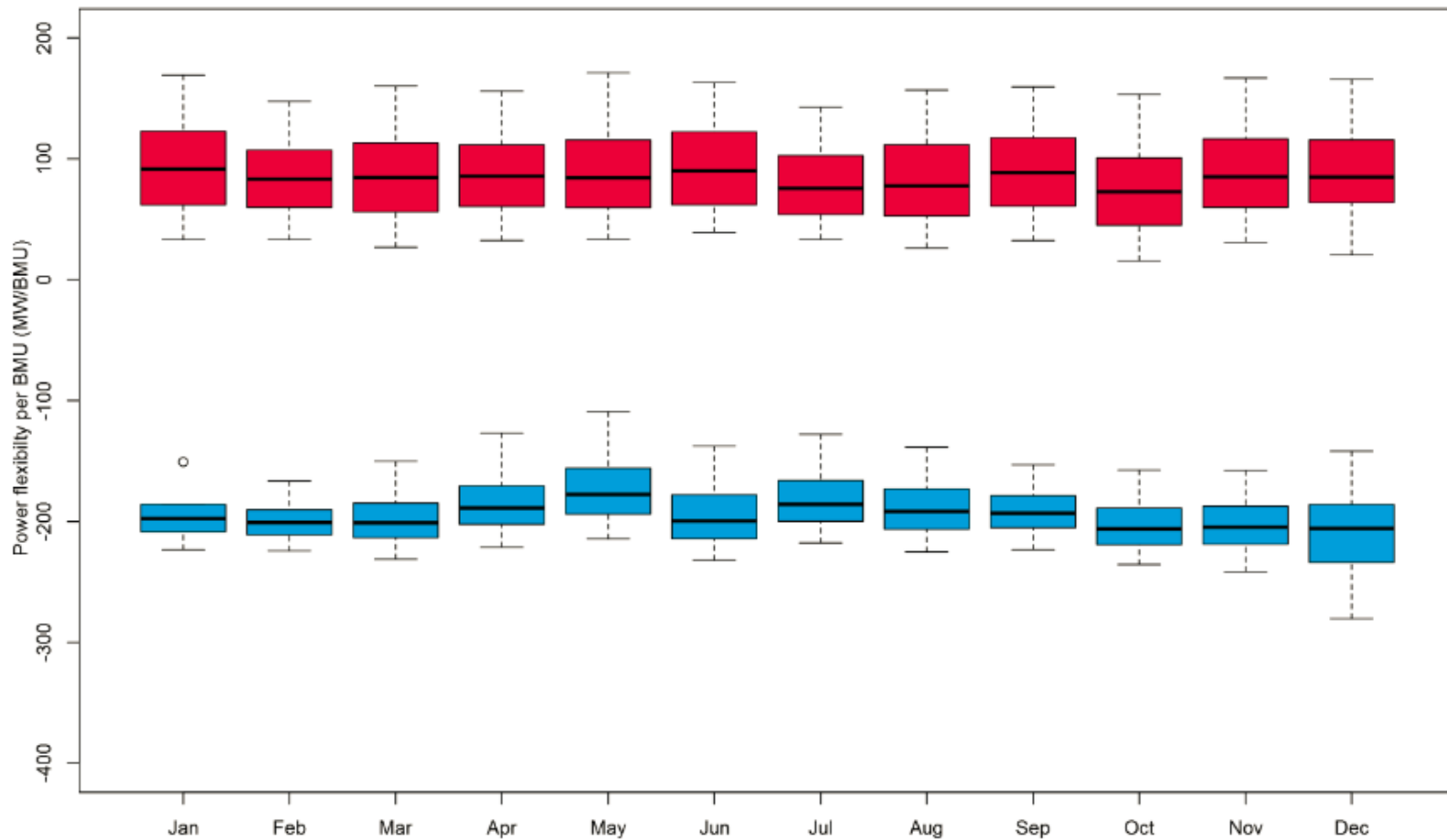
Number of non-responsive BMUs with available Headroom[+] and Footroom[-]. Monthly distributions. [2015]



[5%, 25%, 50%, 75%, 95%]

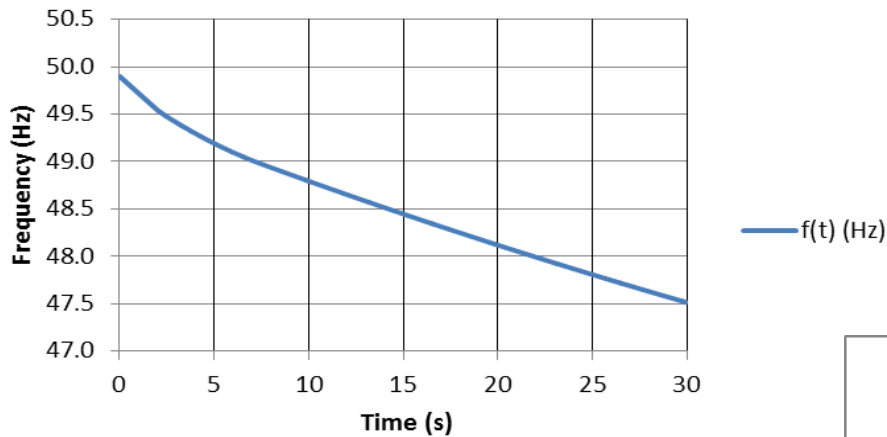
MW per non-responsive BMU

MW per non-responsive BMU with available Headroom[+] and Footroom[-]. Monthly distributions. [2015]

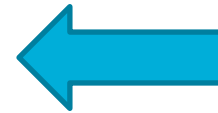


LFSM_U low demand

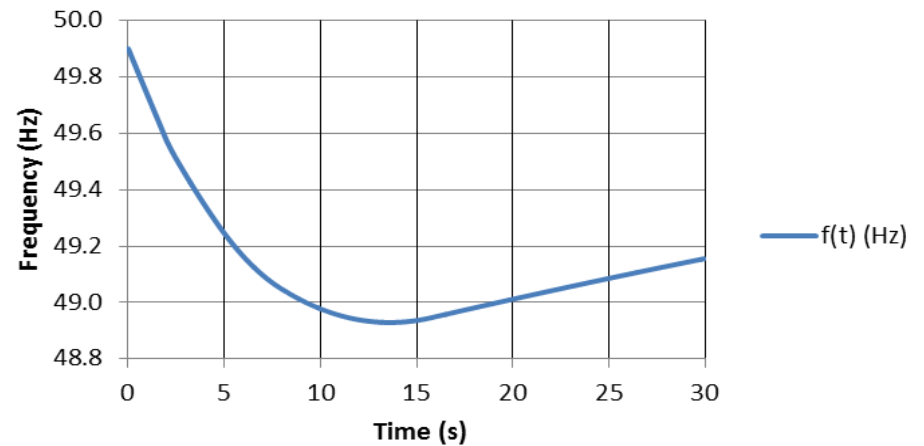
f(t) (Hz)



■ 2000MW loss,
no LFSM_U



f(t) (Hz)

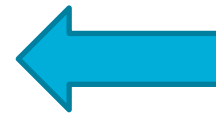
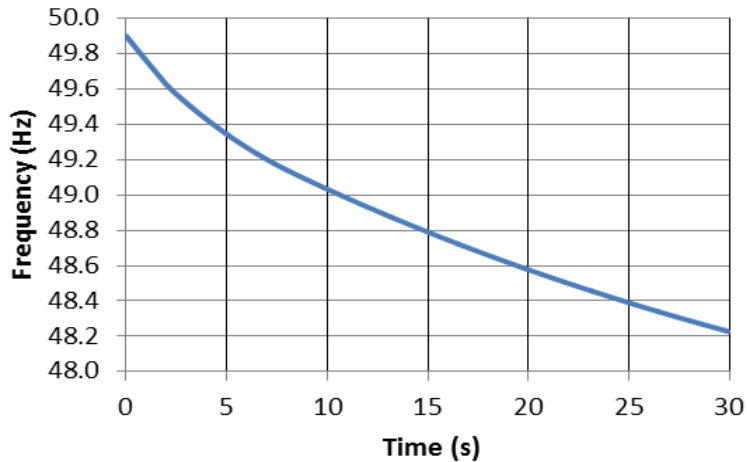


■ 2000MW loss
with LFSM_U



LFSM_U medium demand

f(t) (Hz)

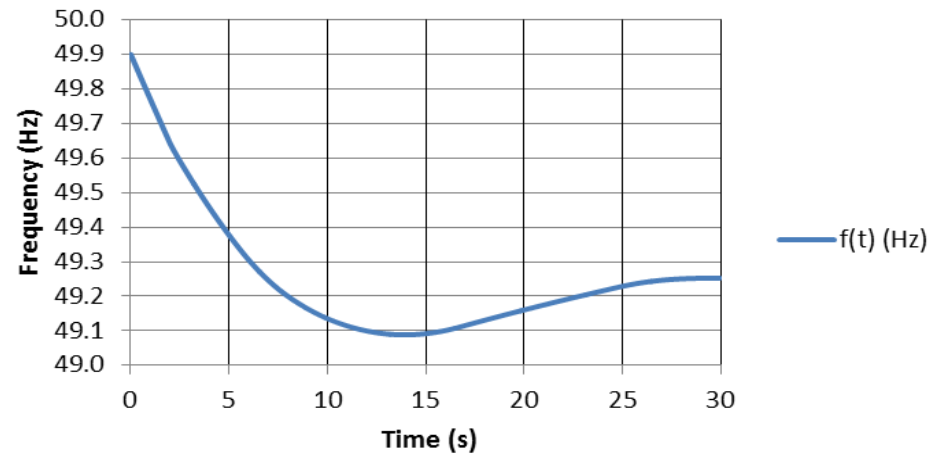


■ 2000MW loss
no LFSM-U

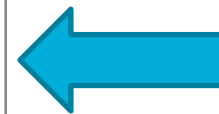
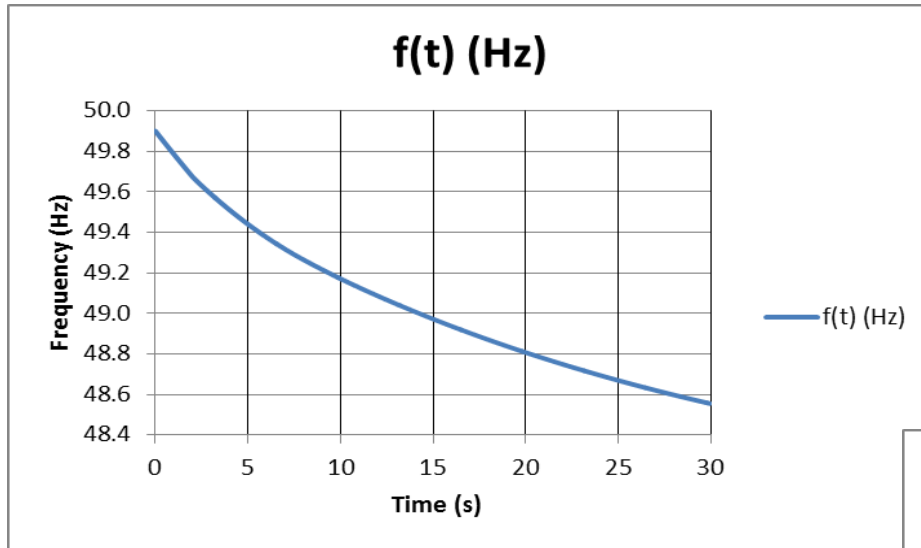
■ 2000MW loss
with LFSM_U



f(t) (Hz)



LFSM_U high demand



■ 2000MW loss no LFSM_U

■ 2000MW loss with LFSM_U

