

**National Electricity
Transmission System Status Report**



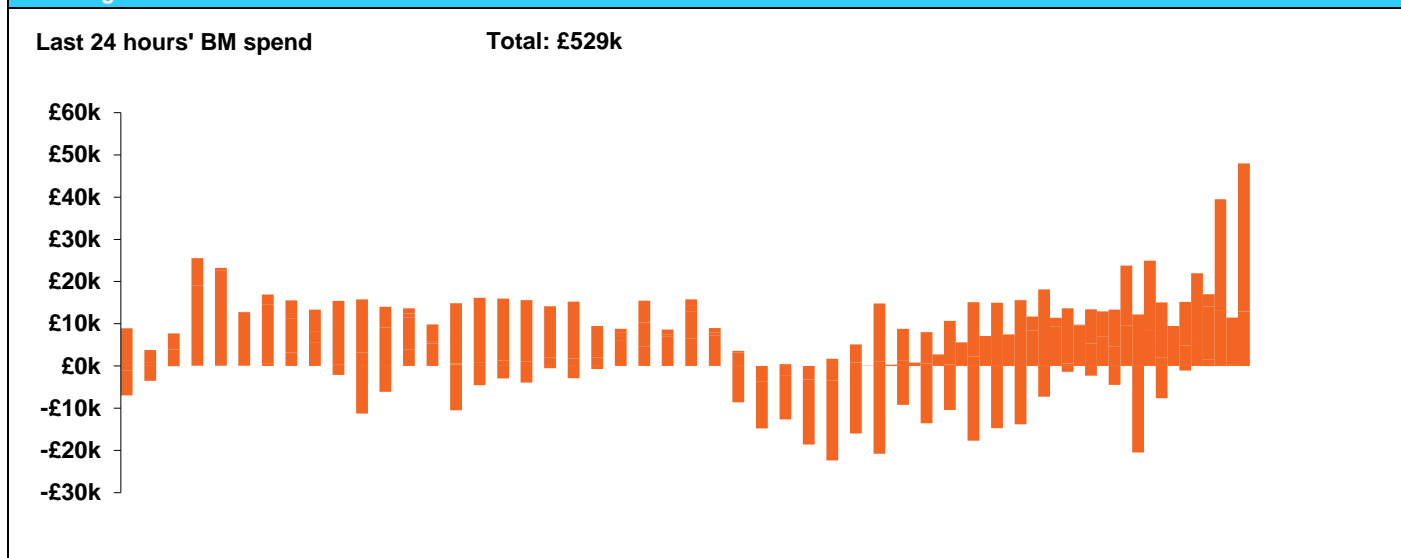
national**grid**ESO

National Electricity Transmission System Status Report
Wednesday 03 April 2019

Today's High Level Risk Status Forecast for the next 24h			
General Status		Voltage	
Demand		System Inertia	
System Margins		Weather	
Generation		Transmission	
Active Constraints			

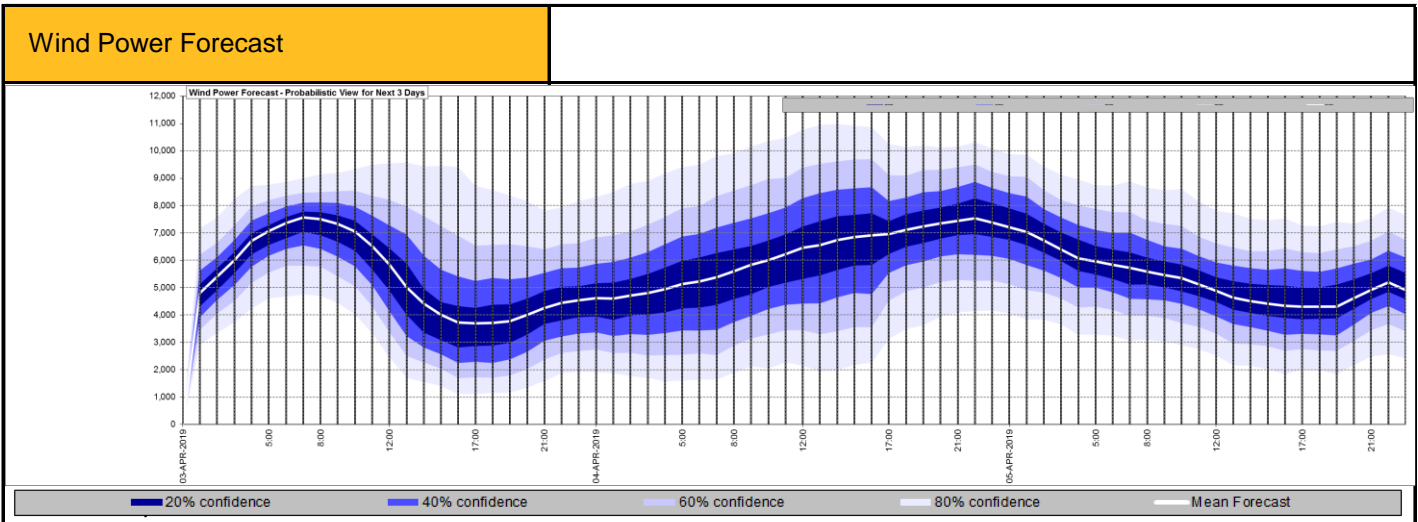
Today's Minimum De-Rated Margin	4715 MW (SP41)	
System Warnings	None	
Current BMU Largest Loss Risk	Generation	1260MW
	Demand	560MW

Balancing Costs



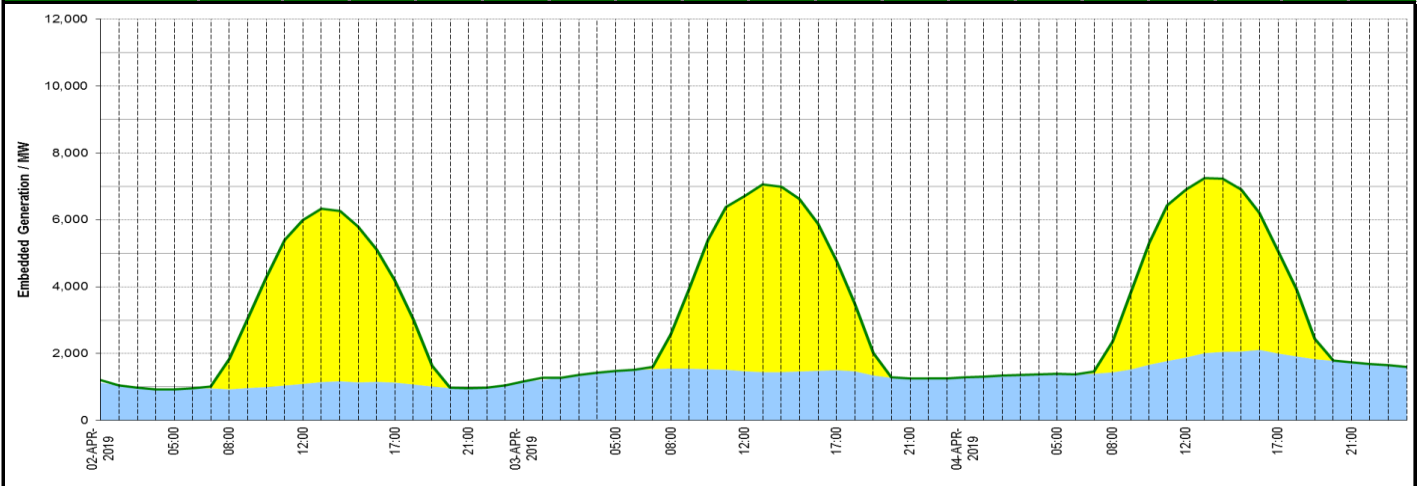
Yesterday's Market Summary	
Cash out price (Max)	£66.50/MWh (SP 22)
Cash Out Price (Min)	£17.50/MWh (SP45)
Peak Demand Yesterday	40,338MW

Interconnectors Net Transfer Capacity (MWs)			
Today	Import	Export	
Netherlands (BritNed)	1000	1030	Fully available
France (IFA)	1000	1000	Bipole 2 Outage
Belgium (Nemo)	1013	1013	Fully Available
Ireland (EWIC)	500	530	Fully Available
Northern Ireland (MOYLE)	395	500	Partially available.



Expected embedded generation (MWs)

Embedded Generation Forecast																	
	02-APR-2019					03-APR-2019					04-APR-2019						
	05:00	08:00	12:00	17:00	21:00	00:00	05:00	08:00	12:00	17:00	21:00	00:00	05:00	08:00	12:00	17:00	21:00
Solar (MW)	0	907	4898	3052	0	0	0	1014	5241	3257	0	0	0	927	5025	3076	0
Wind (MW)	930	933	1094	1135	961	1167	1481	1555	1474	1507	1255	1291	1396	1439	1886	2005	1737
STOR (MW)	0	0	0	0	0	0	0	0	0	0	0	0	0	0	0	0	0
Total (MW)	930	1840	5992	4187	961	1167	1481	2569	6715	4764	1255	1291	1396	2366	6911	5081	1737



Weather	Source	Commentary
Latest forecast (Summary)	Met Office SEPA Natural Resources Wales	<p>Today: Another day of sunshine and heavy showers for most, with hail, thunder and some hill snow. Scotland, Northern Ireland and northern England are likely to cloud over, with a longer spell of rain and hill snow, accompanied by coastal gales.</p> <p>Tonight: More showers or longer spells of rain are expected overnight, mainly affecting the southwest and northeast. There will be some clearer spells, with mist and fog patches in places.</p>
General Weather Concerns e.g. wind, rain, snow, flooding, GB Weather Warnings	Met Office Weather SEPA Natural Resources Wales	<p>Weather Warnings:</p> <p>YELLOW WARNING OF SNOW for 'North East England', 'North West England', 'Strathclyde', 'SW Scotland, Lothian Borders'</p> <p>Valid from 0300 BST on Wed 03 April to 1000 BST on Wed 03 April</p> <p>Some snow on Wednesday morning, mainly affecting high ground.</p> <p>Flood Warnings: There are no flood warnings currently in force</p>

Contains public sector information licensed under the Open Government Licence v1.0

Further Information	
BM Reports	https://www.bmreports.com
System Balancing Reports	https://www.nationalgrideso.com/balancing-data/system-balancing-reports
Forecast Volumes and Costs	https://www.nationalgrideso.com/balancing-data/forecast-volumes-and-costs
NGESO Insights	https://www.nationalgrideso.com/insights