

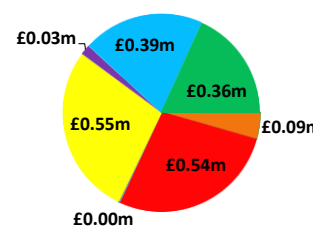
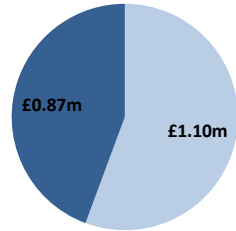
Date: 18/03/2019

BSUoS Charge Estimate: £1.49/MWh
Total Outturn: £1.97m

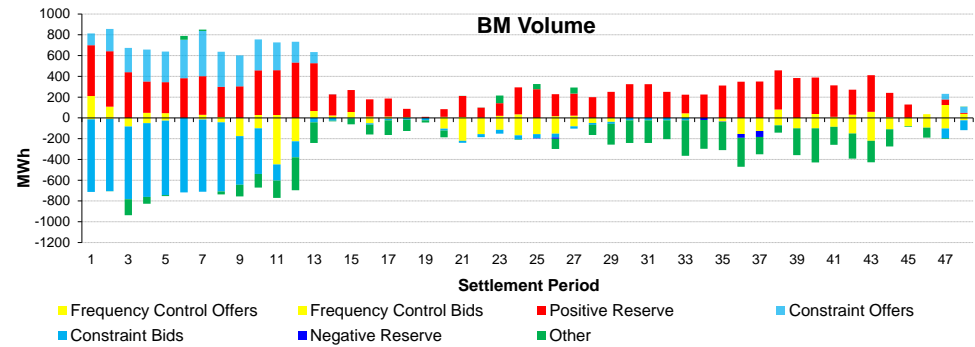
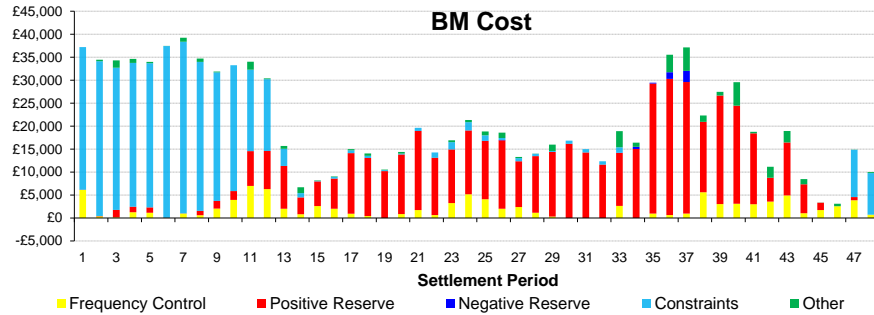
Daily Balancing Costs



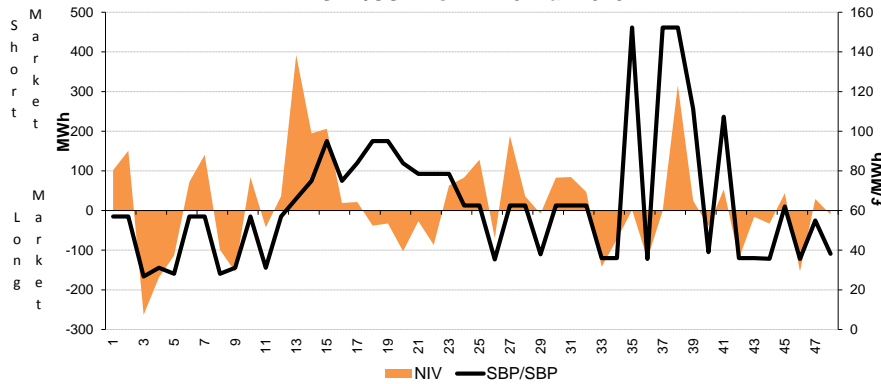
BM Cost (Indicative)
AS Cost (Estimate)



- Energy Imbalance
- Positive Reserve (Op Res + STOR)
- Negative Reserve (Footroom)
- Frequency Control (Response + Fast Reserve)
- Other Reserve (Ancillary Costs Only)
- Constraints (BM & Trades only)
- Other (Reactive + Black Start + BM & AS General)



SBP/SSP Vs NIV 18-Mar-2019



Western Link status: Unavailable

Commentary

System was tightly balanced and consistently flipped between long and short throughout the day. 600MW of STOR was utilised over the morning pick up and a further 262MW was run over the darkness peak. A small amount of additional response was held over the darkness peak. Trades on the interconnectors and BMUs along with some BM actions were required to manage overnight ROCOF levels. BM actions were also required to manage voltage levels in the North West and South. Some BM actions were required to solve power flow restrictions in South Wales in the day.