

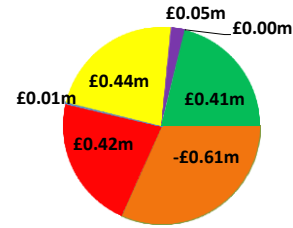
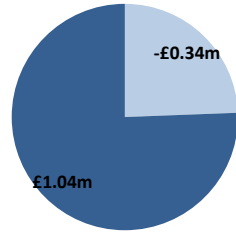
Date: 03/01/2019

BSUoS Charge Estimate: £0.67/MWh  
Total Outturn: £0.71m

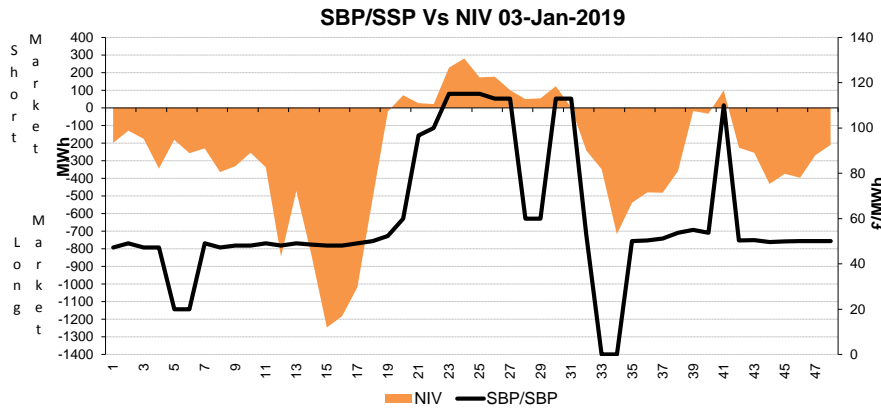
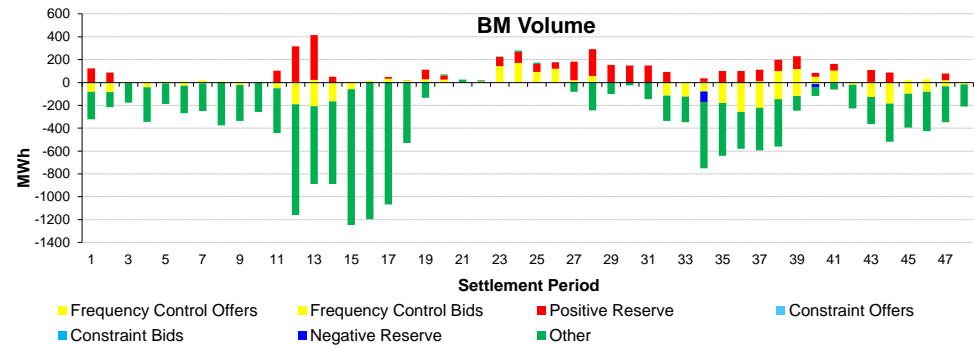
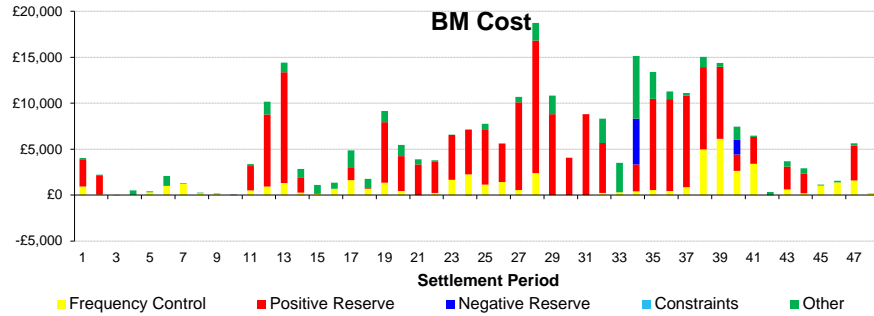
# Daily Balancing Costs



■ BM Cost (Indicative)  
■ AS Cost (Estimate)



- Energy Imbalance
- Positive Reserve (Op Res + STOR)
- Negative Reserve (Footroom)
- Frequency Control (Response + Fast Reserve)
- Other Reserve (Ancillary Costs Only)
- Constraints (BM & Trades only)
- Other (Reactive + Black Start + BM & AS General)



Western Link status: Available

## Commentary

180MW of STOR was run at 1330hrs to cover for generator trip.  
Due to low wind generation all plant requirements for voltage management were met by the market, no system actions were required.