

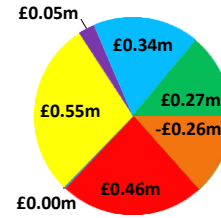
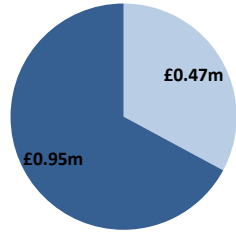
Date: 10/12/2018

BSUoS Charge Estimate: £1.07/MWh
Total Outturn: £1.42m

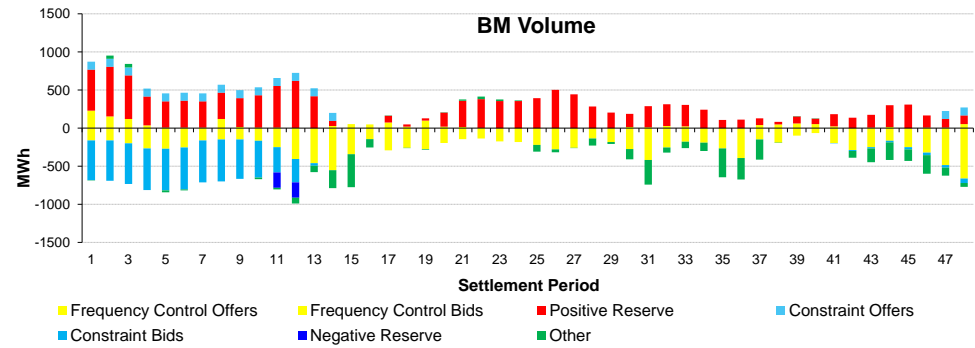
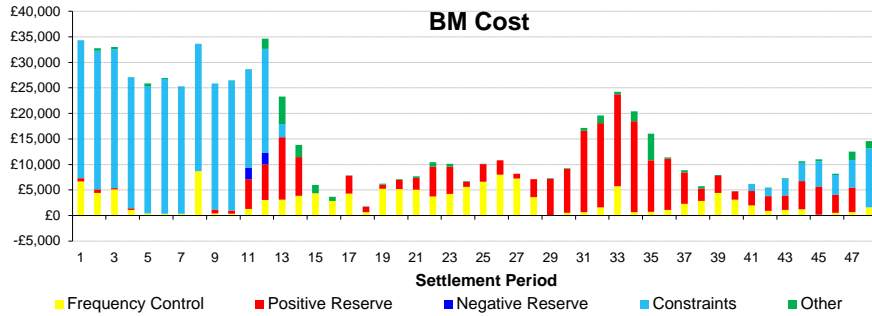
Daily Balancing Costs



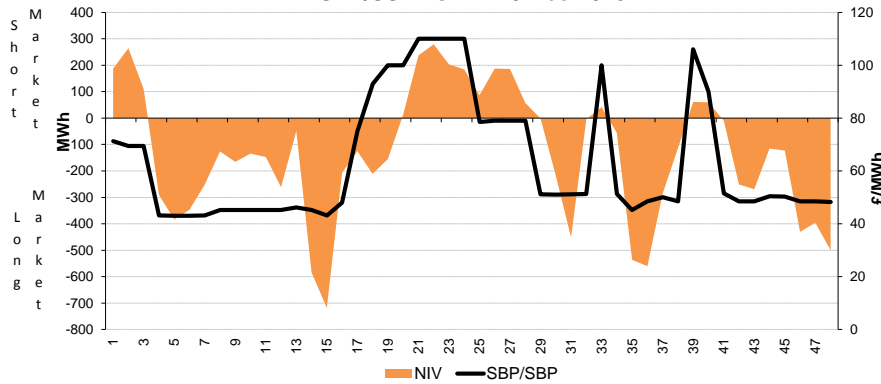
BM Cost (Indicative)
AS Cost (Estimate)



- Energy Imbalance
- Positive Reserve (Op Res + STOR)
- Negative Reserve (Footroom)
- Frequency Control (Response + Fast Reserve)
- Other Reserve (Ancillary Costs Only)
- Constraints (BM & Trades only)
- Other (Reactive + Black Start + BM & AS General)



SBP/SSP Vs NIV 10-Dec-2018



Western Link status: Available

Commentary

Up to 690MW of STOR was run in the morning to cover for plant losses and demand shortfall. Trades were carried out on the Interconnectors in the morning for negative reserve and over the evening peak for positive reserve. Overnight trades were required on the Interconnectors and on BM unit in addition to BM actions for ROCOF. A small number of BM actions were required in the late evening on wind to manage a constraint in the North of Scotland. Overnight Trades were required to manage voltage control in the North West.