

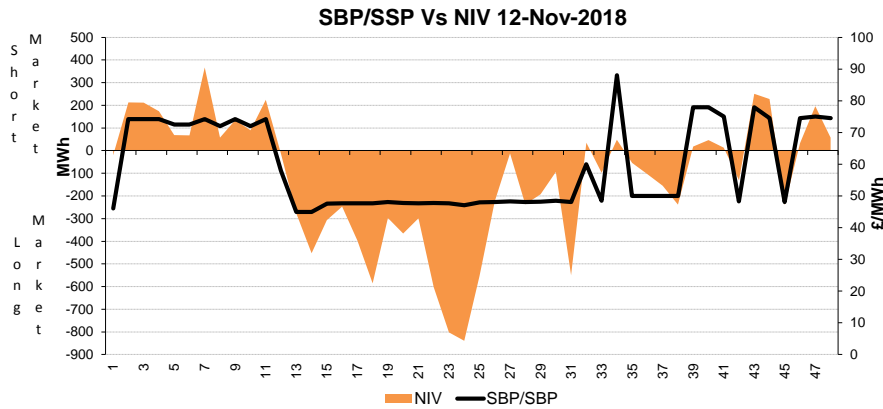
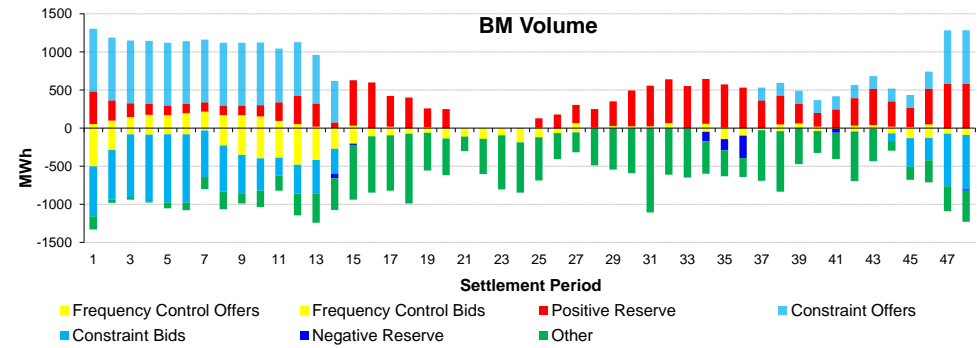
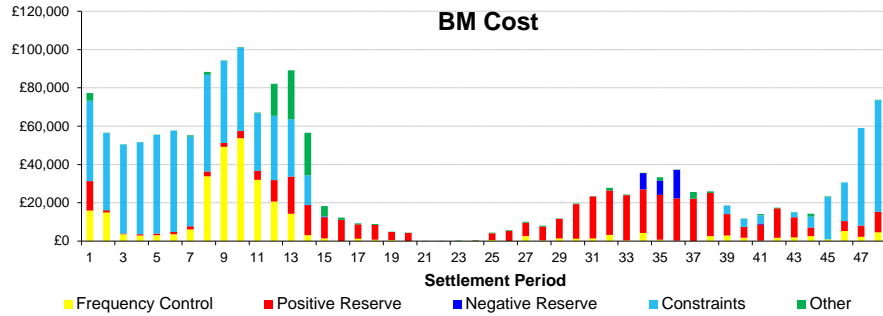
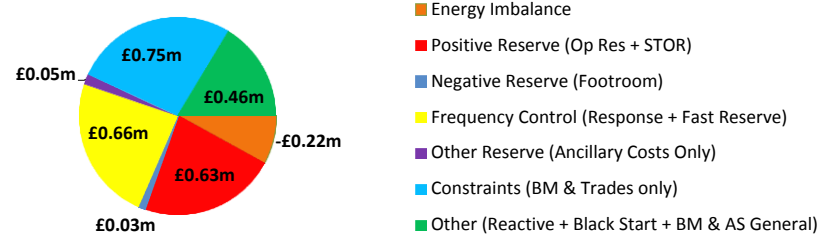
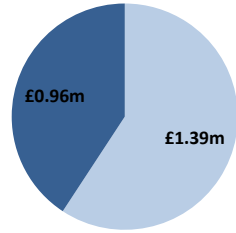
Date: 12/11/2018

BSUoS Charge Estimate: £1.81/MWh
Total Outturn: £2.35m

Daily Balancing Costs



■ BM Cost (Indicative)
■ AS Cost (Estimate)



Western Link status: Available

Commentary

Additional high response was held in the early morning to cover for wind volatility. Trades were carried out on the Interconnectors over the morning peak for positive reserve. ROCOF issues were solved via trades on the Interconnectors and a BM unit in addition to a small number of BM actions. Overnight the voltage levels were regulated with a mix of trades and BM actions.